



Natural Resources and Environment

AGRICULTURE • RESOURCES • CONSERVATION • LAND MANAGEMENT

Salinity Discharge Mapping for the Dundas Tablelands in the Glenelg Salinity Region

Melinda Munro
May 1998

SUMMARY

The objective of this study was to determine the area, severity and location of secondary saline discharge in the Dundas Tablelands East and West LMU's and present it in map and database form.

Aerial photos were used for the location of saline sites and an extensive ground truthing program carried out using ISCON techniques for the classification of salt severity.

A total of 8281 hectares was found to be salt affected with sites varying in size from 146.15 to 0.01 hectares. The majority of sites were affected by a low level of salinity, although some were moderately or severely saline. Most of the discharge sites appeared in drainage lines and depressions, with some in gullies, slopes, break of slopes or lake margins.

The majority of sites had not been treated. This highlights the need to continue to develop an awareness of salinity in the area and provide funding to assist with treatment of saline areas.

CONTENTS

	Page
SUMMARY	i
CONTENTS	ii
ACKNOWLEDGMENTS	iii
1. INTRODUCTION	
1.1 The Glenelg Salinity Strategy & Previous Studies	1
1.2 Glenelg Salinity Region - Land Management Units	2
1.3 Objectives of the Study	3
2. DESCRIPTION OF THE AREA	
2.1 Geology & Soils	4
2.2 Topography	4
2.3 Climate	4
2.4 Vegetation	4
2.5 Landuse	4
2.5 Landuse Table	5
3. METHODOLOGY	
3.1 Aerial Photographs	5
3.2 Field Assessment	5
3.2.1 Location of Possible Saline Sites	5
3.2.2 Assessment of Site for Salinity Indicators	5
3.2.3 Defining and Recording Areas	5
3.3 Maps & Database	6
3.4 Limitations of the Study	7
4. RESULTS - DUNDAS EAST	
4.1 Summary Information	8
4.2 Indicators of Salinity	8
4.3 Severity Classes	8
4.4 Position of Salinity in the Landscape	9
4.5 Treatment of Salinity	9
5. RESULTS - DUNDAS WEST	
4-1 Summary Information	10
4.2 Indicators of Salinity	10
4.3 Severity Classes	10
4.4 Position of Salinity in the Landscape	11
4.5 Treatment of Salinity	11
DISCUSSION	12
REFERENCES	13
APPENDICES	
Appendix 1. Plant Species found in Saline Areas	14
Appendix 2. Site Assessment Sheet	15
Appendix 3. Database Print out of Dundas East Discharge Sites	16
Appendix 4- Database Print out of Dundas West Discharge Sites	49

ACKNOWLEDGMENTS

Helen Anderson (NRE, Hamilton) provided training for the field assessment in this study and gave countless suggestions for the completion of maps and data base.

Likewise, Peter Dixon (NRE, Hamilton) gave advice for field assessment and mapping.

Greg Stuart (NRE, Ballarat) completed all mapping and field assessment for the Chatsworth/Lake Bolac, Dundas Tablelands East outlier.

Members of Landcare Groups and individual farmers in the Dundas Tablelands were of great assistance, sharing knowledge and allowing access onto properties during the study.

1. INTRODUCTION

1.1 The Glenelg Salinity Strategy & Previous Studies

Salinity is one of the most serious forms of land degradation in Victoria and its extent and severity continues to increase (Govt. Victoria, 1988). In the Glenelg Salinity Region alone it has been estimated there are 19,970 hectares of land affected by salt (Ward, 1992). The symptoms of salinity cost the Glenelg Regional community over \$2 million each year in lost agricultural production (Glenelg Salinity Forum, 1993).

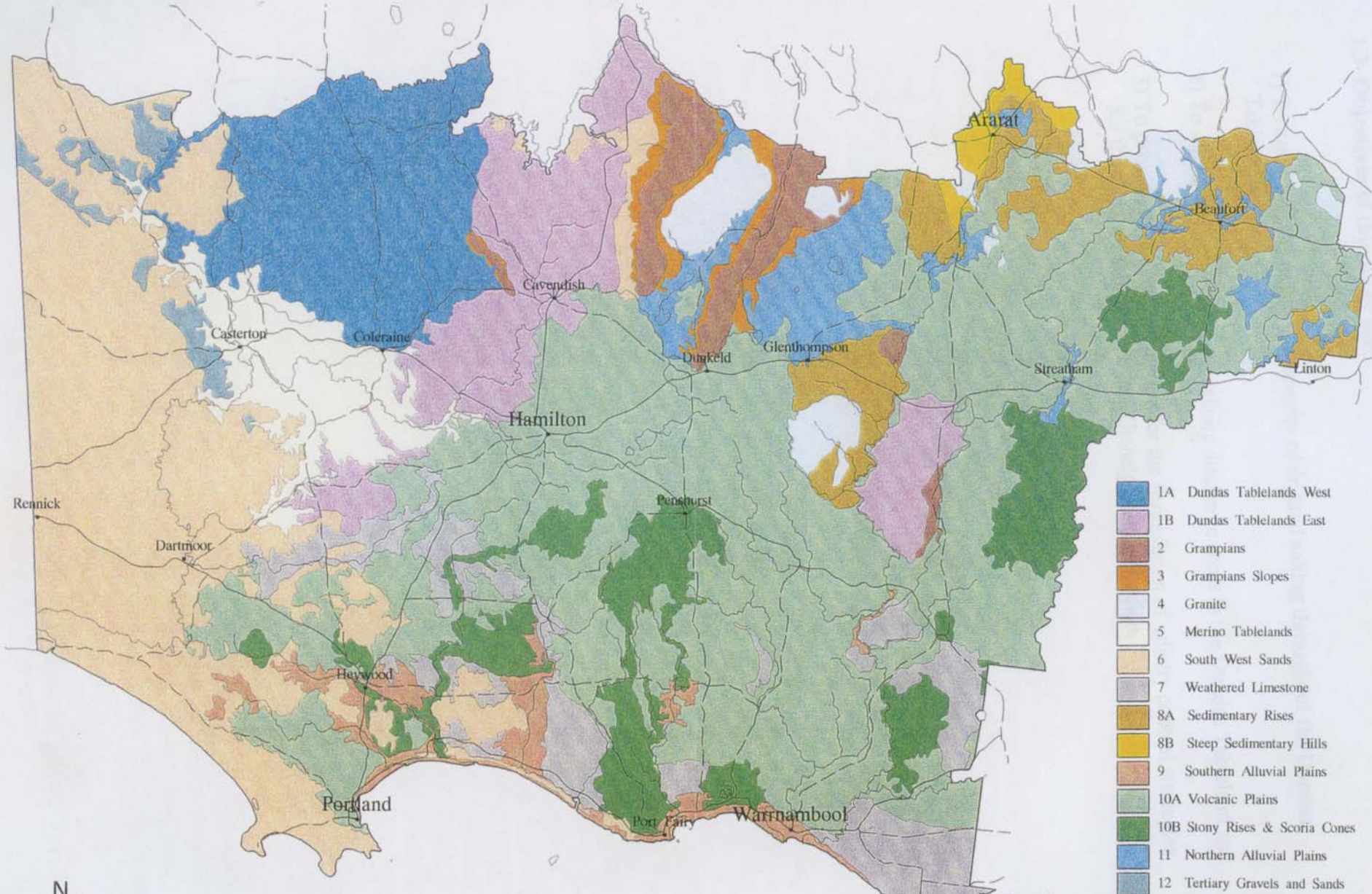
The Glenelg Region Salinity Forum was set up in 1991 to prepare a strategy to combat the problem of dryland salting in the region. Preliminary estimates of salinity were used to help formulate the strategy. Several studies have been carried out in the region in the past that involved the mapping and measurement of salinity, Fisher (1991), Whitworth (1991) and Jerinic & Dahlhaus (1994). These took place in the south-west of Victoria and north of Hamilton respectively. By no means however, did they cover the whole of the Glenelg Region. Due to the subjective nature of some of the salinity discharge data, it was decided in 1993 that a mapping program should begin to improve the accuracy of information. Land management units (LMUs) where the reliability of salinity discharge data was low were to be surveyed first. (Glenelg salinity Forum, 1993).

Salinity discharge mapping reports to date include;

- More, Rosalind (July, 1994) *Salinity Discharge Mapping for the Merino Tablelands in the Glenelg Salinity Region*; DNRE.
- More, Rosalind (November, 1994) *Salinity Discharge Mapping for the Grampians Slopes in the Glenelg Salinity Region*; DNRE.
- Munro, Melinda (May, 1998) *Salinity Discharge Mapping for the South West Sands and Tertiary Gravels and Sands in the Glenelg Salinity Region*; DNRE.

The Dundas Tablelands were chosen to be mapped because of its lack of reliable information and the large proportion of agricultural land thought to be salt affected.

Glenelg Salinity Region – Land Management Units



- 1A Dundas Tablelands West
- 1B Dundas Tablelands East
- 2 Grampians
- 3 Grampians Slopes
- 4 Granite
- 5 Merino Tablelands
- 6 South West Sands
- 7 Weathered Limestone
- 8A Sedimentary Rises
- 8B Steep Sedimentary Hills
- 9 Southern Alluvial Plains
- 10A Volcanic Plains
- 10B Stony Rises & Scoria Cones
- 11 Northern Alluvial Plains
- 12 Tertiary Gravels and Sands

Source: Centre for Land Protection Research, CNR, Bendigo

1.3 Objectives of this study are:

- 1) To determine the extent and severity of dryland salting throughout the Dundas Tablelands,
- 2) To define and accurately map salinity discharge areas in the Dundas Tableland and
- 3) To provide base data information for the formulation of salinity control strategies for the Dundas Tablelands in the Glenelg Salinity Region.

2. DESCRIPTION OF THE AREA

2.1 Geology and Soils

Deeply weathered rhyolite and rhyodacite supports a local low volume ground water system. Local groundwater systems are relatively easier to control because of their size and particularly the closeness of the recharge and discharge areas.

The Chatsworth/Lake Bolac outlier in the Dundas East Tablelands has a weathered Tertiary capping over Grampians Sandstone and Cambrian Greenstone. (Salinity Forum, 1993). Laterised Tertiary sediments have been weathered to produce acidic brown sandy loam soils over an impeding clay layer, usually with ironstone gravel over and in the clay. (Bird, Dickmann, Cumming, Jowett and Kearney, 1992).

2.2 Topography

The Dundas Tablelands elevate 200 to 300m and slope gently down to the north east. The plateau is slightly to moderately dissected below the level of the laterite, creating 'V' (associated with Dundas Tablelands East) and (associated with Dundas Tablelands West) shaped valleys. (Bird, Dickmann, Cumming, Jowett and Kearney, 1992). The Chatsworth/Lake Bolac outlier in the Dundas East Tablelands is associated with a large number of lakes. (Salinity Forum, 1993)

2.3 Climate

The rainfall varies from 600-700mm, mainly falling from March to December. (Salinity Forum 1993). Most rain comes with the westerly winds and cold fronts that are predominately in winter. (Bourke, 1986). The mean annual temperature is 13.3 °C, the mean January temperature being 18.8°C and the July temperature being 8.3°C. (LCC, 1976).

2.4 Vegetation

The landscape is recognised as "red gum country", so is predominantly populated with red gums (*Eucalyptus camaldulensis*) but also contains drooping she-oak (*Allocasuarina verticillata*), blackwood (*Acacia melanoxylon*), black wattle (*Acacia mearnsii*) and sweet bursaria (*Bursaria spinosa*) (Bird, Dickmann, Cumming, Jowett and Kearney, 1992). On farms, composition of district pastures according to Fisher, (1991) 10-20% native pasture, 40-50% improved and around 40% semi improved pasture. (Nichols, 1995) surveyed the Dundas Tablelands West for pasture composition and found the average pasture quality was generally poor with annual grasses and weeds contributing more than 50%.

Three main areas of public ownership, Rocklands Reserve, Mt Dundas Reserve and the Black Range State Park comprises of remnant vegetation.

2.5 Landuse

Landuse in these LMUs comprises predominantly of sheep grazing (medium to fine micron wool from merino sheep, medium to strong micron wool and mutton from cross bred) with a mixed cattle enterprise. Recently farm forestry has been introduced as shelter belts for hardwood production. Agricultural landuse comprises 333,200 hectares, 92%.

Total existing forest cover is 29,600 hectares, 8%. This predominately comprises of the Rocklands Reserve, Mt Dundas Reserve and Black Range State Park.

Table 1. Landuse in the Dundas Tablelands

Landuse	Dundas East	Dundas West
Total LMU Area (ha)	172,000	191,000
Agricultural Area (ha)	147,900	185,300
Existing Forest Cover (ha) (Parks, Reserv. etc)	25,800	3,800

3. METHODOLOGY

3.1 Aerial Photographs

Coloured aerial photos of the area, taken in 1991-92 at an approximate scale of 1:25,000, were used in the study. Those photos that included sections of the Dundas Tablelands were selected. Sites that were possibly saline were marked on plastic overlay material on the photos for field checking.

3.2 Field Assessment

3.2.1 Location of Possible Saline Sites

Extensive and detailed ground truthing for the positive identification of possible saline areas was carried out. The farmers who owned the land where each site fell were approached for permission to inspect the area.

3.2.2 Assessment of sites for Salinity Indicators

Each site was assessed in accordance with the Inventory of Soil Conservation Needs (ISCON) techniques description in detail by Matters (1987) and Matters & Bozon (1995). In brief, a site was inspected for the presence of three or four salt indicator species and other symptoms of salinity. These included the appearance of bare ground, ground water seepage, salt crystals and scalds, erosion as a result of deterioration in soil structure and deterioration or eventual death of trees. Each site was given a severity rating, low (Class 1), medium (Class 2) or severe (Class 3), with the presence of the more salt tolerant species and the increasing appearance of bare ground, salt and the other symptoms of salinity indicating a more severely affected area. Where the site was not purely one class, an estimate of the percentage of each class was made and the overall classification given as the one with the greatest percentage. In some cases it was difficult to tell whether the drainage line was salt affected or simply waterlogged. If two or more salt tolerant species were present the site was considered to be saline. (Matters 1987). Indicator species were found and their severity class listed in Appendix 1. The severity classes, C1, C2 & C3 are described in Table 1. on Page 6.

3.2.3 Defining and Recording Areas

Areas were marked directly onto the photo overlays. Where seeps were too small to be seen on the photo (for example 10m square) a point or dotted line was used to mark their position. E.g. Narrow drainage lines were marked with a dotted line onto photos.

Areas were assessed as being primary or secondary salting. Primary salinity is a natural occurrence and is often evident in the form of saline lakes and wetlands. Secondary salinity, on the other hand, is induced as a result of human activity and occurs when water-tables rise, bringing dissolved salts to the surface of the land (Glenelg Salinity Forum, 1993).

Table 2. Salinity Class Characteristics

Class	Severity of salting	Site characteristics
1	Low	<ul style="list-style-type: none"> - patchy growth in paddock - reduced vigor of crop or pasture - pastures thin or die out, replaced by more salt tolerant species - no salt crystals or bare patches seen
2	Medium	<ul style="list-style-type: none"> - species of higher salt tolerance replace CI indicators - salt stress causes change in leaf shape & color - salt stains & scalds may appear
3	High	<ul style="list-style-type: none"> - bare areas up to 1 square metre - only highly salt tolerant plants present - 2 or 3 species dominant - large areas of bare ground - trees may be dead or dying

Matters & Bozon (1995)

Additional information about position of salinity in the landscape, evidence of salinity and treatment of discharge was noted. Each site was given an individual identification number. One number was used for several areas if they were located close together and had similar severities of salting and class indicator species.

All of the information for each site was recorded onto an individual site assessment sheet. A copy of a typical site assessment sheet can be seen in Appendix 2 on Page 15. Completed sheets for each site identified in the study are held at the NRE office in Hamilton.

3.3 Maps and Database

Areas were transferred from the aerial photos onto 1:25000 map sheets using a Sketchmaster. Sites that were not able to be drawn onto the aerial photos because they were too small, and therefore shape not recorded, were marked as dots or dotted lines on the map sheets. Maps were then sent to Bendigo for digitising where area and coordinates were recorded. Additional site information from the site assessment sheets was then entered for inclusion on the Statewide database. The database and maps are held at the Hamilton NRE office.

3.4 Limitations of the Study

Salt indicator species were identified though not recorded. The identification was only to identify if the site had a presence of two or more indicator species so as to classify the site as saline. Time constraints prevented a botanical survey from being carried out.

Salinity was not extensively searched for in forested areas. No saline sites were identified from aerial photos in forested areas of the LMU's. A systematic search of the entire forested area would be required to determine if salinity existed. This was not considered feasible given the inaccessibility of most of these areas. It was expected that the hydrology under large blocks of remnant vegetation e.g. (Rocklands) would not have changed significantly enough to develop sites of secondary salinity.

The complete length of drainage lines was not surveyed, due to limited time. Drainage lines were checked for salinity at as many accessible crossings as possible. If a drainage line was saline along a number of lengths and at a number of checkpoints along its course, the whole drainage line was considered salt affected.

4. RESULTS - DUNDAS EAST TABLELANDS

Information about the saline sites identified in this study are shown in a printout of the database in Appendix 3 on page 16.

4.1 Summary Information

The Dundas East Tablelands Land Management Unit is comprised of 147,900 hectares of agricultural land. Of this 5298 hectares are saline, affecting 3.6% of Agricultural Land in the Dundas East Tablelands.

There were a total of 1028 sites with an average of 5 ha. Of all the sites, 423 were less than 1 ha and 605 greater than 1 ha. The largest site measured was 146.15 ha and the smallest site 3.7 m².

4.2 Indicators of Salinity

Vegetation and bare ground served as the main indicator of salinity at all sites. Salt encrustations, scalds, tree deterioration and tree death were less common indicators.

Plant species commonly found throughout the study area were Buck's Horn Plantain (*Plantago coronopus*), Strawberry Clover (*Trifolium fragiferum*), Water Buttons (*Cotula coronopifolia*), Annual Beard Grass (*Polypogon monspeliensis*), Sea Barley Grass (*Critesion marinum*) and Spiny Rush (*Juncus acutus*). Sea Barley Grass and Buck's Horn Plantain were found extensively on the flats. In wetter areas, Spiny Rush, Annual Beard Grass and Water Buttons were commonly found.

4.3 Severity Classes

The results in Table 2 show that most of the area of salt affected land was of a low severity, (Class 1). Less area was affected by moderate salting, (Class 2) and less still by severe salting, (Class 3).

Table 3. Area of Land in Each Severity Class

Severity Class	Area (hectares)
1	3248.9
2	1506.3
3	542.5

4.4 Position of Salinity in the Landscape

The majority of saline land was found in drainage lines and in depressions. Less affected area was found on slopes and flats. The least was seen on break of slopes, gullies and around lake margins. These results are shown in Table 3.

Table 4. Position of Salinity in the Landscape

Position in landscape	Number of sites	Area (hectares)
Drainage Line	777	4858.27
Depression	120	291.3
Slope	78	56.69
Flat	21	50.37
Break of Slope	19	28.66
Gully	8	10.12
Lake Margin	5	2.32

4.5 Treatment of Salinity

Sites were assessed according to their level of treatment: Completely treated, partly treated or not treated. "Completely treated" sites were defined as sites where the whole saline area had been treated using one of the recognised salinity management options. For example fencing or fencing and sowing of trees or a salt tolerant pasture species. "Partly treated" sites were defined as sites where some salinity management option had been used, but the whole site had not been treated. "Partial treatment" of a site may have occurred due to the size of the site or because of changes in landownership where discharge areas were transected by boundary fences. "Not treated" were defined as those sites where no salinity management options had been initiated.

Some areas had been completely treated, although the majority of discharge sites are not treated as can be seen from the results in Table 4. The total area not treated is 3185.96 hectares, or 62.5% of the total saline area in the LMU.

Table 5. Treatment of Salinity

Treatment of site	Number of sites	Area (hectares)
Completely treated	178	1354.86
Partly treated	75	555.61
Not treated	775	3387.26

5. RESULTS - DUNDAS WEST TABLELANDS

Information about the saline sites identified in this study are shown in a printout of the database in Appendix 4 on page 49.

4.1 Summary Information

Dundas West Tablelands Land Management Unit is comprised of 185,300 hectares of agricultural land. Of this 2984 hectares is saline, affecting 1.6% of Agricultural Land in the Dundas West Tablelands.

There were a total of 650 sites with an average size of 4.6 ha. Of all the sites, 199 were less than 1 ha and 451 greater than 1 ha. The largest site measured was 55.66 ha and the smallest site 2.2 m².

4.2 Indicators of Salinity

Vegetation and bare ground served as the main indicator of salinity at all of the sites. Salt encrustations, scalds, tree deterioration and tree death were less common indicators.

Plant species commonly found throughout the study area were Buck's Horn Plantain (*Plantago coronopus*), Strawberry Clover (*Trifolium fragiferum*), Water Buttons (*Cotula coronopifolia*), Annual Beard Grass (*Polypogon monspeliensis*), Sea Barley Grass (*Critesion marinum*) and Spiny Rush (*Juncus acutus*). Sea Barley Grass and Buck's Horn Plantain were found extensively on the flats. In wetter areas, Spiny Rush, Annual Beard Grass and Water Buttons were common.

4.3 Severity Classes

The results in Table 2 show that most of the area of salt affected land was of a low severity, (Class 1). Less area was affected by moderate salting, (Class 2) and less still was affected by severe, (Class 3) salting.

Table 6. Area of Land in Each Severity Class

Severity Class	Area (hectares)
1	2341.4
2	612.5
3	30.1

6. DISCUSSION

The overall area of land in the Dundas Tablelands affected by saline discharge is relatively high. These areas however, are generally of a low severity classification.

The majority of saline sites occur along drainage lines. The main concern from salinity existing in this area is its ability to accelerate erosion and the effect its presence has on water quality. However it was not the objective of this study to measure these components. A significant rise in watertable heights due to topography would need to occur for current saline sites to expand significantly although, severity classification may increase.

Very few of the areas of saline discharge have been completely treated. Despite an awareness of salinity amongst farmers contacted during the study, financial constraints were preventing some planned treatment programs from being carried out. This highlights the need to continue providing assistance to implement treatment programs.

REFERENCES

- Bird, P.R., Dickmann, R.B., Cumming, K.N., Kearney, G.A. & Jowett, D.W. (1992). *Trees and shrubs for south west Victoria*. Technical Report Series No. 205, Dept. Ag., Victoria.
- Dahlhaus, P. & Woof, C., (1995) *Bulart Salinity Study II Groundwater and Soils*. Project for study at University of Ballarat., Univ. of Ballarat (unpubl.).
- Fisher, C.N., (1991). *An analysis of dryland salinity in south - west Victoria*. Project for Bachelor of Nat. Resourc., Univ. of New England, New South Wales (unpubl.).
- Gibbons, F.R. & Downes, R.G. (1964) *A Study of the land in south - western Victoria*. Soil Conservation Authority, Victoria.
- Glenelg Salinity Forum (1993). *Salt assault! The Glenelg region salinity strategy*.
- Govt. Victoria (1988). *Salt action: Joint action. Victoria strategy for managing land and water salinity*- Govt. of Victoria.
- Hill, S. & Day, C. (1993). *Land management units of the Glenelg salinity region*. Glenelg region Salinity Strategy Background Paper. Vol. 1. Dept. conserv. & Nat. Resourc., Victoria (unpubl.).
- Jerinic, F.L. & Dahlhaus, P. (1994). *Bulart Salinity Study*. Project for studies at University of Ballarat., Univ. of Ballarat (unpubl.).
- LCC (1979). *Report on the south-western area, district 2*. Land Conservation Council, Melbourne.
- Matters, J. (1987). *Method of assessment of dryland salinity*. Land Protection Division. Part of the Inventory of Soil Conservation Needs, National Soil Conservation Program (unpubl.).
- Matters, J & Bozon, J. (1995). *Spotting Soil Salting- A Victorian guide to salt indicator plants*. Dept. Conserv. For. & Lands, Victoria (unpubl.).
- Nichols, C. (1995). *Salinity implementation survey Dundas Tablelands West*. Department of Natural Resources and Environment, Victoria (unpubl.).
- Ward, H. (1992). *Salinity discharge estimates Glenelg salinity region*- Background Paper for the Glenelg Salinity Forum. Dept. Conserv. & Nat. Resourc., Victoria (unpubl.).
- Whitworth, David. (1991). *A Salinity study of the Dundas River Catchment, Western Victoria*- Third Year Project, Ballarat University College, Victoria (unpubl.).

Appendix 1. Plant Species Found in Saline Areas**Salt Indicator Species**

Grasses		Salinity Class
Sea Barley Grass	<i>Critesion marinum</i>	1 - 2
Tall Wheat Grass	<i>Agropyron elongatum</i>	1 - 2
Annual Beard Grass	<i>Polypogon monspeliensis</i>	1 - 2
Australian Salt Grass	<i>Distichlis distichophylla</i>	2
Small Plants and Shrubs		
Buck's Horn Plantain	<i>Plantago coronopus</i>	1 - 2
Swamp Weed	<i>Selliera radicans</i>	1 - 2
Water Buttons	<i>Cotula coronopifolia</i>	2
Strawberry Clover	<i>Trifolium fragiferum</i>	2
Creeping Monkey Flower	<i>Mimulus repens</i>	2
Round-Leaf Wilsonia	<i>Wilsonia rotundifolia</i>	2
Rushes		
Spiny Rush	<i>Juncus acutus</i>	1 - 2
Streaked Arrow Grass	<i>Trilochin striata</i>	2
Toad Rush	<i>Juncus bufonius</i>	1 - 2

from Matters & Bozon (1995)

Salt Tolerant Species

Cumbungi	<i>Typha orientalis</i>
----------	-------------------------

Appendix 2. Site Assessment Sheet
GLENELG REGION SALINITY MAPPING - Site Information

Photo	Run / No.	P.S. No.	% Cl	% C2	% C3	Position	Treated	Site No.	Notes

P.S. No. Site Number given on the aerial photo
 Treated(has the site been treated): N -Not Treated, F - Fenced, P -Sown with Salt Tolerant Pasture, T - Trees Planted, R -Recharge Control (perennial pasture, trees)
 Position (in the Landscape): S -Slope, BS -Break of Slope, DL -Drainage Line, LM -Lake Margin, L -Lunette, F -Flat, D -Depression, G -Gully, SR -Sandridge / Dune
 Site No. - Consecutive regional number
 % Cl, C2, C3: Percentage of salinity classes present

Appendix 3. SALINITY DISCHARGE SITES IN THE DUNDAS EAST TABLELANDS

Site Number	Map Name	Class 1	Class 2	Class 3	Total Area (ha)	Severity	Treatment Discharge	Landscape Position
030869	CAVENDISH	0.83	0-36	0	1.19	1	S	DL
030870	CAVENDISH	5.37	0	0	5.37	1	N	DL
030871	CAVENDISH	0.44	0	0	0.44	1	N	DL
030871	CAVENDISH	1.56	0	0	1.56	1	N	DL
030871	CAVENDISH	5.08	0	0	5-08	1	N	DL
030872	CAVENDISH	1.79	0	0	1.79	1	N	DL
030873	CAVENDISH	7.55	0	0	7.55	1	N	DL
030874	CAVENDISH	1.22	0	0	1.22	1	S	DL
030875	CAVENDISH	12.42	0	0	12.42	1	N	DL
030876	CAVENDISH	1.14	0	0	1.14	1	N	DL
030877	CAVENDISH	1.32	0	0	1.32	1	N	DL
030877	CAVENDISH	18.71	0	0	18.71	1	N	DL
030879	CAVENDISH	1.01	0	0	1.01	1	N	DL
030880	CAVENDISH	8.23	0	0	8.23	1	N	DL
030881	CAVENDISH	0.63	0	0	0.63	1	N	DL
030881	CAVENDISH	0.6	0	0	0.6	1	N	DL
030882	CAVENDISH	1.26	0	0	1.26	1	N	DL
030883	CAVENDISH	17.74	0	0	17.74	1	N	DL
030884	CAVENDISH	51.83	0	0	51.83	1	N	DL
030885	CAVENDISH	3.78	0	0	3.78	1	N	DL
030885	CAVENDISH	3.68	0	0	3.68	1	N	DL
030886	CAVENDISH	7.92	0	0	7.92	1	N	DL
030888	CAVENDISH	2.06	0.51	0	2.57	1	N	DL
030888	CAVENDISH	1.82	0.46	0	2.28	1	N	DL
030888	CAVENDISH	3.23	0.81	0	4.04	1	N	DL
030888	CAVENDISH	31.83	7.96	0	39.79	1	N	DL
030889	CAVENDISH	6.83	0	0	6.83	1	N	DL
030892	CAVENDISH	9.99	0	0	9.99	1	Y	DL
030904	CAVENDISH	12.37	0	0	12.37	1	Y	DL

Site Number	Map Name	Class 1	Class 2	Class 3	Total Area (ha)	Severity	Treatment Discharge	Landscape Position
030905	CAVENDISH	1.27	0.14	0	1.41	1	N	DL
030906	CAVENDISH	11.26	0	0	11.26	1	N	DL
030907	CAVENDISH	1.28	0	0	1.28	1	N	DL
030908	CAVENDISH	1-36	0.15	0	1.51	1	N	DL
030908	CAVENDISH	1.54	0.17	0	1.71	1	N	DL
030908	CAVENDISH	1.66	0.18	0	1.84	1	N	DL
030908	CAVENDISH	0.45	0.05	0	0.5	1	N	DL
030912	CAVENDISH	3.1	0.55	0	3.65	1	Y	DL
030914	CAVENDISH	2.25	0	0	2.25	1	N	DL
030914	CAVENDISH	1.67	0	0	1.67	1	N	DL
030915	CAVENDISH	0.18	0	0	0.18	1	N	DL
030916	CAVENDISH	0.32	0	0	0.32	1	N	DL
030917	CAVENDISH	4.22	0	0	4.22	1	N	DL
030918	CAVENDISH	2.01	0	0	2.01	1	N	DL
030919	CAVENDISH	1.63	0	0	1.63	1	N	DL
030919	CAVENDISH	1.63	0	0	1.63	1	N	DL
030920	CAVENDISH	0.56	0	0	0.56	1	N	DL
030925	CAVENDISH	14.09	0	0	14.09	1	N	DL
030926	CAVENDISH	1.13	0	0	1.13	1	N	DL
030927	CAVENDISH	1.12	0	0	1.12	1	N	DL
030928	CAVENDISH	0.9	0	0	0.9	1	N	DL
030929	CAVENDISH	0.08	0.01	0	0.09	1	N	DL
030930	CAVENDISH	0.42	0	0	0.42	1	N	DL
030931	CAVENDISH	3.62	0	0	3.62	1	N	DL
030932	CAVENDISH	6.88	0	0	6.88	1	S	DL
030933	CAVENDISH	3.69	0	0	3.69	1	N	DL
030934	CAVENDISH	10.65	0	0	10.65	1	N	DL
030935	CAVENDISH	13.8	0	0	13.8	1	N	DL
030936	CAVENDISH	9.15	0	0	9.15	1	N	DL
030936	CAVENDISH	0.49	0	0	0.49	1	N	DL
030937	CAVENDISH	12.81	1-42	0	14.23	1	Y	DL
030938	CAVENDISH	6.32	0	0	6.32	1	N	DL

Site Number	Map Name	Class 1	Class 2	Class 3	Total Area (ha)	Severity	Treatment Discharge	Landscape Position
030939	CAVENDISH	0.69	0	0	0.69	1	N	DL
031817	HATSWORTH SOUT	13.15	5.63	0	18.78	1	N	DL
031818	HATSWORTH SOUT	17.36	4-34	0	21.7	1	N	DL
031819	HATSWORTH SOUT	0.09	0.37	0	0.46	2	N	DL
031820	HATSWORTH SOUT	1.76	7.05	0	8.81	2	S	DL
031821	HATSWORTH SOUT	20.67	13.79	0	34.46	1	S	DL
031822	HATSWORTH SOUT	3.15	4.73	0	7.88	2	N	DL
031823	HATSWORTH SOUT	2.32	5.41	0	7.73	2	Y	DL
031824	HATSWORTH SOUT	0	0.5	0	0.5	2	N	D
031825	HATSWORTH SOUT	24.8	24.8	2.48	52.08	1	N	DL
031826	HATSWORTH SOUT	0	1.39	0	1.39	2	N	DL
031827	HATSWORTH SOUT	0	0.56	0	0.56	2	N	DL
031828	HATSWORTH SOUT	0.38	0.16	0	0.54	1	N	DL
031829	HATSWORTH SOUT	0.41	0	0	0.41	1	N	DL
030382	DIGBY NORTH	0.4	0	0	0.4	1	N	DL
030383	DIGBY NORTH	0	0	0	0			
030383	DIGBY NORTH	1.63	0	0	1.63	1	N	DL
030384	DIGBY NORTH	0.24	0	0	0.24	1	N	DL
030385	DIGBY NORTH	0	0.58	0	0.58	2	Y	D
031410	DIGBY NORTH	0.336	0.084	0	0.42	1	Y	S
031419	DIGBY NORTH	2.415	2.415	0	4.83	2	N	D
031422	DIGBY NORTH	6.59	0	0	6.59	1	N	DL
031424	DIGBY NORTH	9.255	9.255	0	18.51	2	N	D
031436	DIGBY NORTH	1.49	0	0	1.49	1	N	DL
031441	DIGBY NORTH	1.9	0	0	1.9	1	N	DL
031441	DIGBY NORTH	6.53	0	0	6.53	1	N	DL
031442	DIGBY NORTH	3.57	0	0	3.57	1	N	DL
031456	DIGBY NORTH	1-44	0	0	1.44	1	N	DL
030699	MACKERSEY	1.67	0.72	0	2.39	1	Y	DL
030700	MACKERSEY	0-17	0	0	0.17	1	N	DL
030701	MACKERSEY	7.41	2.12	1.06	10.59	1	Y	DL
030701	MACKERSEY	0.34	0-1	0-05	0.49	1	Y	DL

Site Number	Map Name	Class 1	Class 2	Class 3	Total Area (ha)	Severity	Treatment Discharge	Landscape Position
030701	MACKERSEY	0.66	0.19	0.09	0.94	1	Y	DL
030702	MACKERSEY	9.89	0	0	9.89	1	Y	DL
030703	MACKERSEY	3.72	1.6	0	5.32	1	S	DL
030704	MACKERSEY	14.04	42.11	14.04	70.19	2	N	DL
030705	MACKERSEY	0.14	0	0	0.14	1	N	DL
030706	MACKERSEY	0.82	0.55	0	1.37	1	N	DL
030706	MACKERSEY	0.68	0.45	0	1-13	1	N	DL
030707	MACKERSEY	8.88	17.75	2.96	29.59	2	S	DL
030708	MACKERSEY	3.7	0-41	0	4.11	1	N	DL
030708	MACKERSEY	0.43	0.05	0	0.48	1	N	DL
030709	MACKERSEY	13-65	0	0	13.65	1	N	DL
030710	MACKERSEY	2.22	1.02	0.17	3.41	1	S	DL
030710	MACKERSEY	0.45	0.21	0.03	0.69	1	S	DL
030710	MACKERSEY	0.45	0.21	0.03	0.69	1	S	DL
030710	MACKERSEY	0.45	0.21	0.03	0.69	1	S	DL
030710	MACKERSEY	0.96	0.44	0.07	1.47	1	S	DL
030710	MACKERSEY	5.62	2.6	0.43	8.65	1	S	DL
030711	MACKERSEY	0-32	0	0.02	0.34	1	N	S
030712	MACKERSEY	3.65	0.97	0.24	4.86	1	Y	DL
030713	MACKERSEY	1.55	0	0	1.55	1	Y	DL
030714	MACKERSEY	2.05	0	0	2.05	1	N	DL
030715	MACKERSEY	1.76	1.03	0.15	2.94	1	N	DL
030716	MACKERSEY	4.38	0	0	4.38	1	N	DL
030717	MACKERSEY	2.94	2.94	1.47	7.35	2	Y	DL
030717	MACKERSEY	2.22	2.22	1.11	5.55	2	Y	DL
030718	MACKERSEY	2.7	3.38	0.68	6.76	2	S	DL
030719	MACKERSEY	2.06	1.38	0	3.44	1	N	DL
030720	MACKERSEY	0.05	0.03	0	0.08	1	N	DL
030720	MACKERSEY	3.92	2-61	0	6.53	1	N	DL
030721	MACKERSEY	1.69	0.73	0	2.42	1	N	DL
030722	MACKERSEY	7-9	0.88	0	8.78	1	N	DL
030723	MACKERSEY	0.58	4.03	1.15	5.76	2	N	DL

Site Number	Map Name	Class 1	Class 2	Class 3	Total Area (ha)	Severity	Treatment Discharge	Landscape Position
030724	MACKERSEY	1.42	0	0	1.42	1	N	DL
030725	MACKERSEY	0.03	0	0	0.03	1	N	S
030725	MACKERSEY	0.03	0	0	0.03	1	N	S
030726	MACKERSEY	0.37	0	0	0.37	1	N	S
030727	MACKERSEY	1.73	0	0	1.73	1	N	DL
030728	MACKERSEY	7.35	4.9	0	12.25	1	N	DL
030729	MACKERSEY	26.44	6.61	0	33.05	1	Y	DL
030730	MACKERSEY	0.71	0	0	0.71	1	N	S
030731	MACKERSEY	3.07	3.07	1-53	7.67	2	Y	DL
030732	MACKERSEY	1.31	0.33	0	1.64	1	Y	DL
030733	MACKERSEY	6.59	2.82	0	9.41	1	Y	DL
030734	MACKERSEY	12.46	3-12	0	15.58	1	Y	DL
030736	MACKERSEY	7.36	7.36	0	14.72	2	Y	DL
030737	MACKERSEY	10.89	2.72	0	13.61	1	N	DL
030738	MACKERSEY	0.32	0.14	0	0.46	1	N	DL
030738	MACKERSEY	0.2	0.09	0	0.29	1	N	DL
030738	MACKERSEY	0.2	0.09	0	0.29	1	N	DL
030739	MACKERSEY	2.9	0.73	0	3.63	1	S	DL
030740	MACKERSEY	2.89	1.92	0	4.81	1	S	DL
030741	MACKERSEY	0.97	2.9	0.97	4.84	2	Y	DL
030742	MACKERSEY	0-68	0.68	0	1.36	2	N	DL
030743	MACKERSEY	4.18	1.04	0	5.22	1	Y	DL
030744	MACKERSEY	5-76	0	0	5.76	1	Y	DL
030745	MACKERSEY	0.79	0.09	0	0.88	1	N	DL
030745	MACKERSEY	0.19	0.02	0	0.21	1	N	DL
030746	MACKERSEY	3-93	1.69	0	5.62	1	Y	DL
030746	MACKERSEY	0.22	0.09	0	0.31	1	Y	DL
030747	MACKERSEY	1.11	0.28	0	1.39	1	N	D
030748	MACKERSEY	1.17	9-37	1-17	11.71	2	N	DL
030749	MACKERSEY	31-74	3.73	1.87	37.34	1	Y	DL
030750	MACKERSEY	4.84	4-84	0	9.68	2	S	DL
030751	MACKERSEY	1.77	1.18	0	2.95	1	S	DL

Site Number	Map Name	Class 1	Class 2	Class 3	Total Area (ha)	Severity	Treatment Discharge	Landscape Position
030751	MACKERSEY	0.8	0.53	0	1.33	1	S	DL
030752	MACKERSEY	0.52	0.52	0.26	1.3	2	Y	DL
030752	MACKERSEY	0.24	0.24	0.12	0.6	2	Y	DL
030753	MACKERSEY	1.18	1.18	0.59	2.95	2	Y	DL
030754	MACKERSEY	0.77	0.51	0	1.28	1	Y	DL
030755	MACKERSEY	3.59	3.59	1.8	8.98	2	Y	DL
030756	MACKERSEY	0.06	0.01	0	0.07	1	N	D
030756	MACKERSEY	0.06	0.01	0	0.07	1	N	D
030756	MACKERSEY	0.18	0.04	0	0.22	1	N	D
030757	MACKERSEY	6.3	1.57	0	7.87	1	Y	DL
030758	MACKERSEY	3.08	0.77	0	3.85	1	Y	DL
030759	MACKERSEY	0.55	0.03	0	0.58	1	N	DL
030760	MACKERSEY	4.07	1.75	0	5.82	1	Y	D
030761	MACKERSEY	2.24	0.32	0.64	3.2	1	S	DL
030762	MACKERSEY	3.56	0	0	3.56	1	S	DL
030763	MACKERSEY	3.47	2.31	0	5.78	1	Y	D
030764	MACKERSEY	2.38	0	0	2.38	1	N	D
030765	MACKERSEY	1.38	1.38	0.69	3.45	2	Y	DL
030766	MACKERSEY	0.06	0.03	0	0.09	1	Y	DL
030767	MACKERSEY	0.55	0.14	0	0.69	1	Y	DL
030768	MACKERSEY	2.59	0	0	2.59	1	N	DL
030769	MACKERSEY	9	0	0	9	1	N	DL
030770	MACKERSEY	0.66	0	0	0.66	1	S	DL
030771	MACKERSEY	5.59	0	0	5.59	1	N	DL
030772	MACKERSEY	6.7	0	0	6.7	1	Y	DL
030773	MACKERSEY	1.59	0.4	0	1.99	1	S	DL
030774	MACKERSEY	2.25	0.25	0	2.5	1	Y	D
030775	MACKERSEY	1.51	0.38	0	1.89	1	Y	D
030776	MACKERSEY	0.29	0	0	0.29	1	N	DL
030777	MACKERSEY	4.33	4.33	2.17	10.83	2	Y	DL
030778	MACKERSEY	5-54	1.39	0	6.93	1	S	DL
030779	MACKERSEY	2.17	0	0	2.17	1	N	DL

Site Number	Map Name	Class 1	Class 2	Class 3	Total Area (ha)	Severity	Treatment Discharge	Landscape Position
030780	MACKERSEY	3.98	2.66	0	6.64	1	N	DL
030781	MACKERSEY	5.54	3.7	0	9.24	1	S	DL
030782	MACKERSEY	0.6	0-26	0	0.86	1	N	DL
030782	MACKERSEY	1-65	0.71	0	2.36	1	N	DL
030783	MACKERSEY	0.33	0.08	0	0.41	1	N	DL
030784	MACKERSEY	0-98	0.66	0	1.64	1	Y	DL
030785	MACKERSEY	7-14	0	0	7.14	1	N	DL
030786	MACKERSEY	7.31	0	0	7.31	1	N	DL
030787	MACKERSEY	0.97	0.35	0.07	1.39	1	N	DL
030788	MACKERSEY	1.22	0	0	1.22	1	N	DL
030790	MACKERSEY	0-66	0.17	0	0.83	1	S	DL
030791	MACKERSEY	3.8	0.95	0	4.75	1	S	DL
030792	MACKERSEY	3.12	0	0	3.12	1	Y	D
030793	MACKERSEY	0.74	0	0	0.74	1	Y	DL
030794	MACKERSEY	0-45	0.45	0-23	1.13	2	N	DL
030795	MACKERSEY	0-43	0.28	0	0.71	1	Y	DL
030796	MACKERSEY	0.43	0	0	0.43	1	Y	DL
030796	MACKERSEY	0.17	0	0	0.17	1	Y	DL
030797	MACKERSEY	0.16	0	0	0.16	1	N	D
030798	MACKERSEY	4.56	5.57	0	10.13	1	Y	DL
030799	MACKERSEY	3.59	0	0	3.59	1	N	D
030800	MACKERSEY	5.12	2.2	0	7.32	1	Y	DL
030801	MACKERSEY	0.32	0	0	0.32	1	N	DL
030802	MACKERSEY	0.69	0	0	0.69	1	N	D
030803	MACKERSEY	0-32	0	0	0.32	1	N	DL
030804	MACKERSEY	1.24	0	0	1.24	1	Y	DL
030804	MACKERSEY	0.1	0	0	0.1	1	Y	DL
030805	MACKERSEY	0.12	0	0	0.12	1	N	D
030805	MACKERSEY	0.21	0	0	0.21	1	N	D
030806	MACKERSEY	2.66	0	0	2.66	1	Y	DL
030807	MACKERSEY	4.86	4.86	0	9.72	1	Y	DL
030808	MACKERSEY	0.07	0.36	0.28	0.71	2	Y	DL

Site Number	Map Name	Class 1	Class 2	Class 3	Total Area (ha)	Severity	Treatment Discharge	Landscape Position
030808	MACKERSEY	3.37	16.87	13.5	33.74	2	Y	DL
030808	MACKERSEY	6.76	33.8	27.04	67.6	2	Y	DL
030808	MACKERSEY	0.01	0.06	0.05	0.12	2	Y	DL
030808	MACKERSEY	0.03	0.14	0.11	0.28	2	Y	DL
030808	MACKERSEY	0.06	0.31	0.24	0.61	2	Y	DL
030808	MACKERSEY	0.01	0.06	0.05	0.12	2	Y	DL
030809	MACKERSEY	3.34	2.23	0	5.57	1	Y	DL
030810	MACKERSEY	23.08	18.88	0	41.96	1	N	DL
030811	MACKERSEY	4.91	0	0	4.91	1	N	DL
030813	MACKERSEY	10.77	0	0	10.77	1	Y	DL
030814	MACKERSEY	1.04	0.26	0	1.3	1	Y	DL
030814	MACKERSEY	0.11	0.03	0	0.14	1	Y	DL
030814	MACKERSEY	0.2	0.05	0	0.25	1	Y	DL
030815	MACKERSEY	1.1	1.1	0	2.2	1	N	DL
030816	MACKERSEY	2.73	0.14	0	2.87	1	N	DL
030817	MACKERSEY	5.97	0	0	5.97	1	N	DL
030818	MACKERSEY	3.9	0	0	3.9	1	N	DL
030818	MACKERSEY	3.9	0	0	3.9	1	N	DL
030819	MACKERSEY	1.03	0	0	1.03	1	N	D
030820	MACKERSEY	0	0.12	0	0.12	2	N	D
030821	MACKERSEY	1.01	1.01	0.23	2.25	2	N	DL
030822	MACKERSEY	7.18	1.8	0	8.98	1	N	DL
030823	MACKERSEY	0.48	0	0	0.48	1	N	D
030824	MACKERSEY	0.39	0.04	0	0.43	1	N	DL
030824	MACKERSEY	0.41	0.05	0	0.46	1	N	DL
030825	MACKERSEY	5.68	2.43	0	8.11	1	N	DL
030826	MACKERSEY	6.53	9.79	0	16.32	2	Y	DL
030827	MACKERSEY	2.08	1.39	0	3.47	1	Y	DL
030828	MACKERSEY	0.45	0.05	0	0.5	1	N	DL
030828	MACKERSEY	8.7	0.97	0	9.67	1	N	DL
030829	MACKERSEY	0.01	0.01	0	0.02	1	S	DL
030829	MACKERSEY	0.02	0.01	0	0.03	1	S	TN

Site Number	Map Name	Class 1	Class 2	Class 3	Total Area (ha)	Severity	Treatment Discharge	Landscape Position
030829	MACKERSEY	0.06	0.04	0	0.1	1	S	DL
030829	MACKERSEY	0.29	0.19	0	0.48	1	S	DL
030829	MACKERSEY	0.06	0.04	0	0.1	1	S	DL
030829	MACKERSEY	10.28	6-85	0	17.13	1	S	DL
030829	MACKERSEY	0.03	0.02	0	0.05	1	S	DL
030829	MACKERSEY	10.28	6.85	0	17.13	1	S	DL
030830	MACKERSEY	1.36	0	0	1.36	1	N	DL
030831	MACKERSEY	10-79	2.7	0	13.49	1	N	DL
030831	MACKERSEY	0.06	0.02	0	0.08	1	N	DL
030832	MACKERSEY	1.69	0.19	0	1.88	1	N	DL
030833	MACKERSEY	2.89	1.93	0	4.82	1	S	DL
030834	MACKERSEY	0.04	0.04	0-01	0.09	2	S	DL
030834	MACKERSEY	1.84	1-84	0.41	4.09	2	S	DL
030835	MACKERSEY	0.43	0	0	0.43	1	N	D
030836	MACKERSEY	0.22	0.22	0.11	0.55	2	S	DL
030836	MACKERSEY	1.24	1.24	0.62	3.1	2	S	DL
030836	MACKERSEY	0.59	0.59	0-3	1.48	2	S	DL
030836	MACKERSEY	0-18	0.18	0.09	0.45	2	S	DL
030836	MACKERSEY	2.59	2.59	1.3	6.48	2	S	DL
030837	MACKERSEY	6.42	0	0	6.42	1	N	S
030838	MACKERSEY	12.89	0	0	12.89	1	Y	DL
030839	MACKERSEY	0-45	0.19	0	0.64	1	N	DL
030839	MACKERSEY	2.11	0.91	0	3.02	1	N	DL
030840	MACKERSEY	4.78	4.78	2.39	11.95	2	Y	DL
030841	MACKERSEY	1.05	0.12	0	1.17	1	N	S
030842	MACKERSEY	8.77	4.72	0	13.49	1	Y	DL
030843	MACKERSEY	0-43	0.05	0	0.48	1	N	DL
030843	MACKERSEY	0.49	0.05	0	0.54	1	N	DL
030844	MACKERSEY	1-33	0.15	0	1.48	1	Y	S
030845	MACKERSEY	0.2	0.03	0	0.23	1	Y	S
030846	MACKERSEY	0.07	0	0	0.07	1	N	DL
030846	MACKERSEY	3.42	0.18	0	3.6	1	N	DL

Site Number	Map Name	Class 1	Class 2	Class 3	Total Area (ha)	Severity	Treatment Discharge	Landscape Position
030846	MACKERSEY	1.32	0.07	0	1.39	1	N	DL
030847	MACKERSEY	4.15	6.92	2.77	13.84	2	Y	DL
030848	MACKERSEY	7.17	11.95	4.78	23.9	2	Y	DL
030849	MACKERSEY	1.39	1.39	0	2.78	2	S	DL
030850	MACKERSEY	0.31	0.25	0.06	0.62	1	S	DL
030851	MACKERSEY	0.07	0.59	0	0.66	2	N	DL
030851	MACKERSEY	0.87	7.81	0	8.68	2	N	DL
031908	MACKERSEY	0.13	0	0	0.13	1	N	D
031909	MACKERSEY	0.17	0	0	0.17	1	N	D
031910	MACKERSEY	0.32	0.29	0.03	0.64	1	S	DL
031911	MACKERSEY	0.18	0	0	0.18	1	N	DL
031912	MACKERSEY	0.05	0.05	0	0.1	2	S	DL
031913	MACKERSEY	0.16	0.16	0	0.32	2	S	DL
031914	MACKERSEY	0.23	0.06	0	0.29	1	N	DL
031915	MACKERSEY	0.1	0.1	0	0.2	2	Y	DL
031916	MACKERSEY	1.02	0.25	0	1.27	1	N	DL
031917	MACKERSEY	0.57	0.57	0.13	1.27	2	Y	DL
031917	MACKERSEY	0.06	0.06	0.01	0.13	2	Y	DL
031918	MACKERSEY	0.25	0.03	0	0.28	1	N	D
031919	MACKERSEY	0-37	0-16	0	0.53	1	N	DL
031919	MACKERSEY	0.33	0.14	0	0.47	1	N	DL
031920	MACKERSEY	0.11	0	0	0.11	1	N	D
031921	MACKERSEY	0.15	0.1	0	0.25	1	N	D
031923	MACKERSEY	0-1	0	0	0.1	1	N	D
031925	MACKERSEY	0.14	0	0	0.14	1	N	S
031925	MACKERSEY	0.06	0	0	0.06	1	N	S
031926	MACKERSEY	0.18	0.04	0	0.22	1	N	DL
031927	MACKERSEY	0.48	0	0	0.48	1	N	D
031928	MACKERSEY	0.26	0	0	0.26	1	N	D
031929	MACKERSEY	0-06	0	0	0.06	1	N	S
031930	MACKERSEY	0.06	0	0	0.06	1	N	S
031931	MACKERSEY	9.17	10.19	1-02	20.38	2	S	DL

Site Number	Map Name	Class 1	Class 2	Class 3	Total Area (ha)	Severity	Treatment Discharge	Landscape Position
031932	MACKERSEY	0.12	0.01	0	0.13	1	N	S
031933	MACKERSEY	0.41	0.05	0	0.46	1	N	S
031934	MACKERSEY	0.17	0.02	0	0.19	1	N	S
030609	MOORALLA	0.04	0.01	0	0.05	1	N	F
030610	MOORALLA	0.02	0.07	0	0.09	2	N	F
030611	MOORALLA	0.25	0.16	0	0.41	1	N	F
030612	MOORALLA	0.07	0	0	0.07	1	N	D
030613	MOORALLA	0.01	0	0	0.01	1	N	LM
030613	MOORALLA	0.01	0	0	0.01	1	N	LM
030614	MOORALLA	0	0.13	0	0.13	2	N	DL
030614	MOORALLA	0	0.15	0	0.15	2	N	DL
030615	MOORALLA	0.16	0	0	0.16	1	N	D
030615	MOORALLA	0.21	0	0	0.21	1	N	D
030616	MOORALLA	0	15.22	3.8	19.02	2	N	F
030616	MOORALLA	0	13.62	5.84	19.46	2	N	F
030616	MOORALLA	0	0.56	0.14	0.7	2	N	F
030617	MOORALLA	0	1.8	1.2	3	2	Y	D
030617	MOORALLA	1.49	1	0	2.49	1	Y	D
030617	MOORALLA	0.32	0.22	0	0.54	1	Y	D
030618	MOORALLA	0.66	0	0	0.66	1	N	F
030618	MOORALLA	0.72	0	0	0.72	1	N	F
030619	MOORALLA	0.1	0	0	0.1	1	N	DL
030619	MOORALLA	0.06	0	0	0.06	1	N	DL
030620	MOORALLA	0.14	0.06	0	0.2	1	N	F
030620	MOORALLA	0.11	0.05	0	0.16	1	N	F
030621	MOORALLA	0.06	0	0	0.06	1	N	F
030621	MOORALLA	0.03	0.01	0	0.04	1	N	F
030622	MOORALLA	16.01	0	0	16.01	1	N	DL
030622	MOORALLA	0	0	0	0	1	N	DL
030623	MOORALLA	1.13	0.13	0	1.26	1	S	DL
030623	MOORALLA	1.1	0.37	0	1.47	1	S	DL
030624	MOORALLA	0.06	0.5	0	0.56	2	S	DL

Site Number	Map Name	Class 1	Class 2	Class 3	Total Area (ha)	Severity	Treatment Discharge	Landscape Position
030624	MOORALLA	0.06	0.5	0	0.56	2	S	DL
030625	MOORALLA	6.35	0.71	0	7.06	1	Y	DL
030625	MOORALLA	7.15	0.79	0	7.94	1	Y	DL
030626	MOORALLA	0	0.06	0.04	0.1	2	N	DL
030626	MOORALLA	0	0.08	0.06	0.14	2	N	DL
030626	MOORALLA	0	0.08	0.05	0.13	2	N	DL
030626	MOORALLA	0	0.36	0.24	0.6	2	N	DL
030627	MOORALLA	0	0.02	0.06	0.08	3	N	DL
030627	MOORALLA	0	0.01	0.02	0.03	3	N	DL
030627	MOORALLA	0	0.37	0.85	1.22	3	N	DL
030627	MOORALLA	0	0	0	0	1	N	DL
030628	MOORALLA	0.34	0	0	0.34	1	N	F
030628	MOORALLA	0.21	0	0	0.21	1	N	F
030628	MOORALLA	0.16	0	0	0.16	1	N	F
030629	MOORALLA	1.31	0	0	1.31	1	N	F
030629	MOORALLA	1.81	0	0	1.81	1	N	F
030630	MOORALLA	1.26	0	0	1.26	1	N	F
030630	MOORALLA	1.19	0	0	1.19	1	N	F
030631	MOORALLA	0.88	0	0	0.88	1	N	D
030631	MOORALLA	1.14	0	0	1.14	1	N	D
030632	MOORALLA	0	0.14	0.34	0.48	3	N	DL
030632	MOORALLA	0	0.18	0.43	0.61	3	N	DL
030632	MOORALLA	0	0.18	0.43	0.61	3	N	DL
030632	MOORALLA	0	0.14	0.34	0.48	3	N	DL
030632	MOORALLA	0	0.28	0.65	0.93	3	N	DL
030632	MOORALLA	0	0.78	3.1	3.88	3	N	DL
030633	MOORALLA	0	0.12	0	0.12	2	N	DL
030633	MOORALLA	0	0.13	0	0.13	2	N	DL
030634	MOORALLA	0	0.26	0	0.26	2	N	DL
030634	MOORALLA	0	0.26	0	0.26	2	N	DL
030635	MOORALLA	0	1.43	0.36	1.79	2	N	DL
030635	MOORALLA	0	1.35	0.34	1.69	2	N	DL

Site Number	Map Name	Class 1	Class 2	Class 3	Total Area (ha)	Severity	Treatment Discharge	Landscape Position
030636	MOORALLA	0.3	0.23	0.38	0.91	3	Y	DL
030636	MOORALLA	2.58	1.93	3.22	7.73	3	Y	DL
030636	MOORALLA	0	0	0.44	0.44	3	Y	DL
030637	MOORALLA	0	0.01	0.01	0.02	3	N	DL
030637	MOORALLA	0	0.01	0.02	0.03	3	N	DL
030637	MOORALLA	0	0.19	0.24	0.43	3	N	DL
030637	MOORALLA	0	0.02	0.04	0.06	3	N	DL
030637	MOORALLA	0	0.06	0.1	0.16	3	N	DL
030637	MOORALLA	0	0.01	0.02	0.03	3	N	DL
030637	MOORALLA	0	0.03	0.04	0.07	3	N	DL
030638	MOORALLA	0.48	0.05	0	0.53	1	S	DL
030638	MOORALLA	0.06	0.35	0.17	0.58	2	S	DL
030638	MOORALLA	0.2	1.21	0.6	2.01	2	S	DL
030639	MOORALLA	0	0.37	0.16	0.53	2	N	DL
030639	MOORALLA	0	0.26	0.18	0.44	2	N	DL
030640	MOORALLA	0.09	0	0	0.09	1	N	DL
030640	MOORALLA	0.12	0	0	0.12	1	N	DL
030641	MOORALLA	0	1.43	0.16	1.59	2	N	DL
030641	MOORALLA	0	1.66	0	1.66	2	N	DL
030641	MOORALLA	0	0.3	0.03	0.33	2	N	DL
030641	MOORALLA	0	0.3	0.03	0.33	2	N	DL
030642	MOORALLA	0	0.29	0.03	0.32	2	N	DL
030642	MOORALLA	0	0.57	0.07	0.64	2	N	DL
030642	MOORALLA	0	0.01	0	0.01	2	N	DL
030642	MOORALLA	0	0.27	0.03	0.3	2	N	DL
030643	MOORALLA	0	0.53	0.79	1.32	3	N	DL
030643	MOORALLA	0	0.46	0.68	1.14	3	N	DL
030644	MOORALLA	0	0.34	1.37	1.71	3	N	DL
030644	MOORALLA	0	0.75	1.13	1.88	3	N	DL
030645	MOORALLA	0	0.33	3	3.33	3	Y	DL
030645	MOORALLA	0	0.38	3.4	3.78	3	Y	DL
030646	MOORALLA	2.83	4.05	1.21	8.09	2	S	DL

Site Number	Map Name	Class 1	Class 2	Class 3	Total Area (ha)	Severity	Treatment Discharge	Landscape Position
030646	MOORALLA	2.21	3.16	0.95	6.32	2	S	DL
030646	MOORALLA	8.95	9.65	4.94	23.54	2	S	DL
030646	MOORALLA	4.13	5.91	1.77	11.81	2	S	DL
030647	MOORALLA	7.99	0.89	0	8.88	1	N	DL
030647	MOORALLA	7.7	0.86	0	8.56	1	N	DL
030648	MOORALLA	0.63	0	0	0.63	1	Y	S
030648	MOORALLA	0.74	0	0	0.74	1	Y	S
030649	MOORALLA	0	1.06	0.45	1.51	2	Y	DL
030649	MOORALLA	0	0.59	0.25	0.84	2	Y	DL
030650	MOORALLA	2.01	0.5	0	2.51	1	N	DL
030650	MOORALLA	1.83	0.46	0	2.29	1	N	DL
030651	MOORALLA	0.58	0.15	0	0.73	1	N	DL
030651	MOORALLA	1.05	0.45	0	1.5	1	N	DL
030651	MOORALLA	0.11	0.03	0	0.14	1	N	DL
030651	MOORALLA	0.11	0.03	0	0.14	1	N	DL
030652	MOORALLA	0	10.5	2.63	13.13	2	Y	D
030652	MOORALLA	0	11.87	1.32	13.19	2	Y	D
030653	MOORALLA	0.57	0.06	0	0.63	1	N	D
030653	MOORALLA	1.09	0.12	0	1.21	1	N	D
032082	NAREEN - DUNDAS	0	100	3.69	103.69	3	N	DL
032083	NAREEN - DUNDAS	1.36	0	0	1.36	1	N	DL
032085	NAREEN - DUNDAS	11.92	11.919	15.892	39.73	3	N	DL
032086	NAREEN - DUNDAS	3.21	0	0	3.21	1	N	DL
032087	NAREEN - DUNDAS	0	2.68	0	2.68	1	N	DL
032088	NAREEN - DUNDAS	0	2.56	0	2.56	2	N	D
032090	NAREEN - DUNDAS	0	5.25	0	5.25	2	N	DL
032092	NAREEN - DUNDAS	20.44	0	0	20.44	1	N	DL
032094	NAREEN - DUNDAS	0	0	25.77	25.77	3	S	DL
032095	NAREEN - DUNDAS	0	0	41.76	41.76	3	Y	DL
032096	NAREEN - DUNDAS	0.49	0	0	0.49	1	N	DL
032097	NAREEN - DUNDAS	18.25	0	0	18.25	1	N	DL
032097	NAREEN - DUNDAS	1.87	0	0	1.87	1	N	DL

Site Number	Map Name	Class 1	Class 2	Class 3	Total Area (ha)	Severity	Treatment Discharge	Landscape Position
032098	NAREEN - DUNDAS	6.92	0	0	6.92	1	N	DL
032099	NAREEN - DUNDAS	0.598	0.138	0.184	0.92	1	Y	DL
032099	NAREEN - DUNDAS	51.73	11.9385	15.918	79.59	1	Y	DL
032100	NAREEN - DUNDAS	0.912	0.608	1.52	3.04	3	Y	DL
032100	NAREEN - DUNDAS	0.168	0.112	0.28	0.56	3	Y	DL
032101	NAREEN - DUNDAS	0	0	37.88	37.88	3	S	DL
032102	NAREEN - DUNDAS	0	0	66.49	66.49	3	N	DL
032105	NAREEN - DUNDAS	0	0	20.82	20.82	3	S	DL
032106	NAREEN - DUNDAS	0	1.3	0	1.3	2	Y	DL
032106	NAREEN - DUNDAS	0	31.71	0	31.71	2	Y	DL
032109	NAREEN - DUNDAS	0	5.86	0	5.86	2	N	DL
032110	NAREEN - DUNDAS	73.46	0	0	73.46	1	N	DL
032111	NAREEN - DUNDAS	0	11.88	0	11.88	2	Y	DL
032112	NAREEN - DUNDAS	3.91	0	0	3.91	1	N	DL
032113	NAREEN - DUNDAS	0	1.66	0	1.66	2	N	DL
032114	NAREEN - DUNDAS	0.93	0	0	0.93	1	N	DL
032115	NAREEN - DUNDAS	3.13	0	0	3.13	1	N	DL
032116	NAREEN - DUNDAS	5.32	0	0	5.32	1	N	DL
032117	NAREEN - DUNDAS	1.8	0	0	1.8	1	N	DL
032118	NAREEN - DUNDAS	0	0	3.03	3.03	3	N	D
032122	NAREEN - DUNDAS	0.44	0	0	0.44	1	N	DL
032123	NAREEN - DUNDAS	0	0	5.28	5.28	3	N	DL
032124	NAREEN - DUNDAS	0	0	4.98	4.98	3	N	DL
032125	NAREEN - DUNDAS	2.41	0	0	2.41	1	N	DL
032126	NAREEN - DUNDAS	0	0	7.67	7.67	3	N	DL
032128	NAREEN - DUNDAS	3.018	7.242	1.8105	12.07	2	S	DL
032129	NAREEN - DUNDAS	10.02	24.054	6.0135	40.09	2	N	DL
032130	NAREEN - DUNDAS	5.083	0.897	0	5.98	1	N	DL
032131	NAREEN - DUNDAS	4.454	0.786	0	5.24	1	Y	DL
032131	NAREEN - DUNDAS	5.262	0.9285	0	6.19	1	Y	DL
032143	NAREEN - DUNDAS	3.9	0	0	3.9	1	N	D
032145	NAREEN - DUNDAS	0.042	0	0.028	0.07	1	Y	DL

Site Number	Map Name	Class 1	Class 2	Class 3	Total Area (ha)	Severity	Treatment Discharge	Landscape Position
032145	NAREEN - DUNDAS	37-02	0	24.68	61.7	1	Y	DL
032146	NAREEN - DUNDAS	29.23	58.46	58.46	146.15	3	N	DL
032146	NAREEN - DUNDAS	0.13	0.26	0.26	0.65	3	N	DL
032147	NAREEN - DUNDAS	0.672	0.336	0.112	1.12	1	N	DL
032147	NAREEN - DUNDAS	24.66	12.33	4.11	41.1	1	N	DL
032148	NAREEN - DUNDAS	1-54	0	0	1.54	1	N	DL
032149	NAREEN - DUNDAS	13.17	26.346	4.391	43.91	2	S	DL
032164	NAREEN - DUNDAS	1.93	0	0	1.93	1	N	D
032164	NAREEN - DUNDAS	4.09	0	0	4.09	1	N	D
032168	NAREEN - DUNDAS	4.383	0.487	0	4.87	1	Y	DL
032169	NAREEN - DUNDAS	4.09	0	0	4.09	1	N	DL
032171	NAREEN - DUNDAS	0	2.48	0	2.48	2	Y	DL
032172	NAREEN - DUNDAS	11.12	0	0	11.12	1	N	DL
032173	NAREEN - DUNDAS	8-21	0	0	8.21	1	S	DL
032174	NAREEN - DUNDAS	0	11.86	0	11.86	2	N	DL
032233	NAREEN - DUNDAS	1.24	0	0	1.24	1	N	DL
032234	NAREEN - DUNDAS	0	0	9.11	9.11	3	Y	DL
032235	NAREEN - DUNDAS	0	13.65	0	13.65	2	Y	DL
032236	NAREEN - DUNDAS	10.04	0	0	10.04	1	N	DL
032237	NAREEN - DUNDAS	1.485	0.165	0	1.65	1	Y	DL
032238	NAREEN - DUNDAS	3.094	0.546	0	3.64	1	N	DL
032238	NAREEN - DUNDAS	1.003	0-177	0	1.18	1	N	DL
032238	NAREEN - DUNDAS	1.522	0-2685	0	1.79	1	N	DL
032238	NAREEN - DUNDAS	1.7	0.3	0	2	1	N	DL
032239	NAREEN - DUNDAS	17.41	4.352	0	21.76	1	S	DL
032240	NAREEN - DUNDAS	1.073	2.146	7.511	10.73	3	Y	DL
032241	NAREEN - DUNDAS	0	9.12	0	9.12	2	Y	DL
032242	NAREEN - DUNDAS	5.82	0	0	5.82	1	N	DL
032242	NAREEN - DUNDAS	0-97	0	0	0.97	1	N	DL
032243	NAREEN - DUNDAS	0.27	0	0	0.27	1	N	LM
032244	NAREEN - DUNDAS	0.3	0	0	0.3	1	N	LM
032246	NAREEN - DUNDAS	0	100	14.46	114.46	3	N	DL

Site Number	Map Name	Class 1	Class 2	Class 3	Total Area (ha)	Severity	Treatment Discharge	Landscape Position
032247	NAREEN - DUNDAS	0	1.95	0	1.95	2	N	D
032248	NAREEN - DUNDAS	0	27.47	0	27.47	2	N	DL
032249	NAREEN - DUNDAS	7.53	0	0	7.53	1	N	D
032250	NAREEN - DUNDAS	0	17.67	0	17.67	2	N	DL
032251	NAREEN - DUNDAS	3.26	0	0	3.26	1	N	G
032252	NAREEN - DUNDAS	0.93	0	0	0.93	1	N	G
032253	NAREEN - DUNDAS	2.91	0	0	2.91	1	N	G
032254	NAREEN - DUNDAS	0.62	0	0	0.62	1	N	DL
032255	NAREEN - DUNDAS	22.7	2.522	0	25.22	1	N	DL
032256	NAREEN - DUNDAS	1.39	0	0	1.39	1	N	BS
032257	NAREEN - DUNDAS	0.216	0.024	0	0.24	1	N	DL
032257	NAREEN - DUNDAS	0.594	0.066	0	0.66	1	N	DL
032258	NAREEN - DUNDAS	1.071	0.189	0	1.26	1	N	DL
032259	NAREEN - DUNDAS	13-42	0	0	13.42	1	N	D
032259	NAREEN - DUNDAS	0.83	0	0	0.83	1	N	D
032260	NAREEN - DUNDAS	0.6	0	0	0.6	1	N	DL
032282	NAREEN - DUNDAS	4-6	0	0	4.6	1	N	DL
032283	NAREEN - DUNDAS	0.81	0	0	0.81	1	N	DL
032284	NAREEN - DUNDAS	3.501	0.389	0	3.89	1	Y	DL
032285	NAREEN - DUNDAS	2.295	0.405	0	2.7	1	N	DL
032289	NAREEN - DUNDAS	2.52	0	0	2.52	1	N	DL
032289	NAREEN - DUNDAS	2.81	0	0	2.81	1	N	DL
032290	NAREEN - DUNDAS	9.042	6.028	0	15.07	1	S	DL
032291	NAREEN - DUNDAS	1.008	0.112	0	1.12	1	N	DL
032291	NAREEN - DUNDAS	1.143	0.127	0	1.27	1	N	DL
032293	NAREEN - DUNDAS	4.98	0	0	4.98	1	N	DL
032294	NAREEN - DUNDAS	0	0.75	0	0.75	2	N	DL
032295	NAREEN - DUNDAS	0.72	0	0	0.72	1	N	D
032296	NAREEN - DUNDAS	0.55	0	0	0.55	1	N	G
032297	NAREEN - DUNDAS	1.14	0	0	1.14	1	Y	DL
032298	NAREEN - DUNDAS	5.193	12.117	0	17.31	2	Y	DL
032299	NAREEN - DUNDAS	8.404	12.606	0	21.01	2	N	DL

Site Number	Map Name	Class 1	Class 2	Class 3	Total Area (ha)	Severity	Treatment Discharge	Landscape Position
032301	NAREEN - DUNDAS	3.816	0.424	0	4.24	1	Y	DL
032302	NAREEN - DUNDAS	0.73	5.84	0.73	7.3	2	Y	DL
032303	NAREEN - DUNDAS	14.21	2.508	0	16.72	1	S	DL
032305	NAREEN - DUNDAS	11.96	0	0	11.96	1	S	DL
032307	NAREEN - DUNDAS	3-96	0	0	3.96	1	N	DL
032308	NAREEN - DUNDAS	0.93	0	0	0.93	1	N	DL
032309	NAREEN - DUNDAS	2.94	0	0	2.94	1	N	DL
032311	NAREEN - DUNDAS	0.26	0.26	0	0.52	2	N	BS
032312	NAREEN - DUNDAS	0.75	0	0	0.75	1	N	D
032313	NAREEN - DUNDAS	2.34	0	0	2.34	1	N	DL
032314	NAREEN - DUNDAS	12.89	1.432	0	14.32	1	S	DL
032315	NAREEN - DUNDAS	3.76	0	0	3.76	1	N	DL
032316	NAREEN - DUNDAS	3.36	0	0	3.36	1	N	DL
032317	NAREEN - DUNDAS	1-68	0	0	1.68	1	N	DL
032318	NAREEN - DUNDAS	2.63	0	0	2.63	1	N	DL
032319	NAREEN - DUNDAS	3.52	0	0	3.52	1	N	DL
032320	NAREEN - DUNDAS	0.936	0.234	0	1.17	1	Y	DL
032321	NAREEN - DUNDAS	5.42	0	0	5.42	1	N	DL
032322	NAREEN - DUNDAS	1.544	0.386	0	1.93	1	Y	DL
032325	NAREEN - DUNDAS	1.26	0	0	1.26	1	N	DL
032325	NAREEN - DUNDAS	2.7	0	0	2.7	1	N	DL
032326	NAREEN - DUNDAS	3-13	0	0	3.13	1	N	DL
032327	NAREEN - DUNDAS	1.21	0	0	1.21	1	N	DL
032328	NAREEN - DUNDAS	3.12	0	0	3.12	1	N	DL
032328	NAREEN - DUNDAS	3.5	0	0	3.5	1	N	DL
032329	NAREEN - DUNDAS	0.673	2.0175	0	2.69	2	N	DL
032331	NAREEN - DUNDAS	0-22	0	0	0.22	1	N	DL
032333	NAREEN - DUNDAS	80.03	8.892	0	88.92	1	Y	DL
032337	NAREEN - DUNDAS	0	0.94	0	0.94	2	N	DL
032338	NAREEN - DUNDAS	0	0.68	0	0.68	2	N	D
032338	NAREEN - DUNDAS	0	4.09	0	4.09	2	N	D
032339	NAREEN - DUNDAS	0.76	0	0	0.76	1	N	DL

Site Number	Map Name	Class 1	Class 2	Class 3	Total Area (ha)	Severity	Treatment Discharge	Landscape Position
032341	NAREEN - DUNDAS	0.6	0	0	0.6	1	N	DL
032341	NAREEN - DUNDAS	0.77	0	0	0.77	1	N	DL
032344	NAREEN - DUNDAS	5.06	0	0	5.06	1	N	DL
032345	NAREEN - DUNDAS	0	1.35	0	1.35	1	N	S
032345	NAREEN - DUNDAS	0	1.29	0	1.29	1	N	S
032346	NAREEN - DUNDAS	0.47	0	0	0.47	1	N	DL
032347	NAREEN - DUNDAS	1.55	0	0	1.55	1	N	DL
032348	NAREEN - DUNDAS	0.7	0	0	0.7	1	N	D
032350	NAREEN - DUNDAS	2	0	0	2	1	N	F
032351	NAREEN - DUNDAS	0.52	0	0	0.52	1	N	F
032352	NAREEN - DUNDAS	0.3	0	0	0.3	1	N	DL
032356	NAREEN - DUNDAS	0.52	0	0	0.52	1	N	DL
032356	NAREEN - DUNDAS	0.54	0	0	0.54	1	N	DL
032357	NAREEN - DUNDAS	0.97	0	0	0.97	1	N	DL
032357	NAREEN - DUNDAS	0.68	0	0	0.68	1	N	DL
032358	NAREEN - DUNDAS	0.8	0	0	0.8	1	N	DL
032359	NAREEN - DUNDAS	0	1.42	0	1.42	2	N	DL
032360	NAREEN - DUNDAS	0	5.61	0	5.61	2	N	DL
032366	NAREEN - DUNDAS	0.75	0	0	0.75	1	N	DL
032373	NAREEN - DUNDAS	0.53	0	0	0.53	1	N	DL
032532	NAREEN - DUNDAS	10.75	0	0	10.75	1	S	DL
032534	NAREEN - DUNDAS	4.536	3.024	0	7.56	1	S	DL
032535	NAREEN - DUNDAS	2.56	0	0	2.56	1	N	DL
030441	NIGRETTA	0.01	0	0	0.01	1	N	DL
030442	NIGRETTA	1.4	0	0	1.4	1	N	DL
030443	NIGRETTA	2.83	0	0	2.83	1	N	D
030444	NIGRETTA	1.04	0	0	1.04	1	N	D
030445	NIGRETTA	0.75	0	0	0.75	1	N	S
030446	NIGRETTA	0.8	0	0	0.8	1	N	DL
030999	NIGRETTA	0.21	0	0	0.21	1	N	DL
030999	NIGRETTA	4.1	0	0	4.1	1	N	DL
031002	NIGRETTA	3.01	0	0	3.01	1	N	DL

Site Number	Map Name	Class 1	Class 2	Class 3	Total Area (ha)	Severity	Treatment Discharge	Landscape Position
031004	NIGRETTA	11.06	0	0	11.06	1	Y	DL
031005	NIGRETTA	4.54	0.5	0	5.04	1	N	DL
031015	NIGRETTA	8.69	0.97	0	9.66	1	N	DL
031016	NIGRETTA	0.12	0.03	0	0.15	1	N	DL
031017	NIGRETTA	0.46	0	0	0.46	1	S	DL
031018	NIGRETTA	2.62	0	0	2.62	1	N	DL
031019	NIGRETTA	1.23	0	0	1.23	1	N	DL
031020	NIGRETTA	16.38	0	0	16.38	1	N	DL
031021	NIGRETTA	1.68	0	0	1.68	1	N	DL
031021	NIGRETTA	1.02	0	0	1.02	1	N	DL
031023	NIGRETTA	4.88	0	0	4.88	1	N	DL
031024	NIGRETTA	0.23	0	0	0.23	1	N	S
031025	NIGRETTA	5.83	1.46	0	7.29	1	S	DL
031027	NIGRETTA	2.87	0	0	2.87	1	N	DL
031028	NIGRETTA	2.09	0	0	2.09	1	N	DL
031029	NIGRETTA	0.34	0	0	0.34	1	N	DL
031030	NIGRETTA	0.05	0	0	0.05	1	N	DL
031030	NIGRETTA	13-98	0	0	13.98	1	N	DL
031030	NIGRETTA	0.08	0	0	0.08	1	N	DL
030940	WANNON	1.7	0	0	1.7	1	N	DL
030941	WANNON	1.82	0	0	1.82	1	N	DL
030942	WANNON	1.09	0	0	1.09	1	N	DL
030942	WANNON	0.97	0	0	0.97	1	N	DL
030943	WANNON	1.2	0	0	1.2	1	N	DL
030943	WANNON	1.2	0	0	1.2	1	N	DL
030944	WANNON	1.1	0	0	1.1	1	N	DL
030947	WANNON	3.19	0	0	3.19	1	N	DL
030948	WANNON	3.17	0	0	3.17	1	N	DL
030949	WANNON	14.42	0	0	14.42	1	N	DL
030951	WANNON	1.35	0	0	1.35	1	N	DL
030953	WANNON	4.16	0	0	4.16	1	N	DL
030953	WANNON	0.25	0	0	0.25	1	N	DL

Site Number	Map Name	Class 1	Class 2	Class 3	Total Area (ha)	Severity	Treatment Discharge	Landscape Position
030954	WANNON	0.32	0	0	0.32	1	N	S
030955	WANNON	3.37	0.84	0	4.21	1	Y	DL
030956	WANNON	2.65	0	0	2.65	1	N	DL
030957	WANNON	0.26	0.07	0	0.33	1	N	S
030958	WANNON	0.26	0	0	0.26	1	N	DL
030959	WANNON	3.53	0	0	3.53	1	N	D
030962	WANNON	1.27	0	0	1.27	1	N	D
030963	WANNON	1.06	0	0	1.06	1	N	D
030964	WANNON	0.9	0	0	0.9	1	N	S
030965	WANNON	0.22	0	0	0.22	1	N	S
030966	WANNON	0.27	0	0	0.27	1	N	S
030967	WANNON	4.75	0	0	4.75	1	N	S
030967	WANNON	0.71	0	0	0.71	1	N	S
030968	WANNON	0.76	0	0	0.76	1	N	S
030971	WANNON	7.82	0.87	0	8.69	1	N	DL
030973	WANNON	6.07	0	0	6.07	1	N	DL
030974	WANNON	6.27	0	0	6.27	1	N	DL
030975	WANNON	0.08	0	0	0.08	1	N	DL
030976	WANNON	0.26	0	0	0.26	1	N	DL
031881	WANNON	0.13	0	0	0.13	1	N	S
031882	WANNON	0.38	0	0	0.38	1	N	S
031884	WANNON	0.63	0	0	0.63	1	N	DL
031887	WANNON	2.08	0	0	2.08	1	N	D
031888	WANNON	1.55	0	0	1.55	1	N	D
031889	WANNON	1.69	0	0	1.69	1	N	D
031890	WANNON	0.42	0	0	0.42	1	N	S
031891	WANNON	0.92	0	0	0.92	1	N	S
031892	WANNON	0.3	0	0	0.3	1	N	S
031893	WANNON	3.34	0	0	3.34	1	N	S
031032	WANNON NORTH	1.89	0	0	1.89	1	Y	DL
031033	WANNON NORTH	0.78	0	0	0.78	1	N	DL
031034	WANNON NORTH	0.1R	0	0	0.18			

Site Number	Map Name	Class 1	Class 2	Class 3	Total Area (ha)	Severity	Treatment Discharge	Landscape Position
031034	WANNON NORTH	1.08	0	0	1.08	1	N	DL
031036	WANNON NORTH	3.36	0	0	3.36	1	N	DL
031037	WANNON NORTH	13.61	0	0	13.61	1	N	DL
031038	WANNON NORTH	7.16	0	0	7.16	1	N	DL
031039	WANNON NORTH	11.47	0	0	11.47	1	N	DL
031040	WANNON NORTH	0.66	0.07	0	0.73	1	N	DL
031041	WANNON NORTH	12.05	0	0	12.05	1	N	DL
031041	WANNON NORTH	0.34	0	0	0.34	1	N	DL
031041	WANNON NORTH	0.25	0	0	0.25	1	N	DL
031041	WANNON NORTH	0.35	0	0	0.35	1	N	DL
031042	WANNON NORTH	1.7	0.42	0	2.12	1	N	DL
031042	WANNON NORTH	1.41	0.36	0	1.77	1	N	DL
031043	WANNON NORTH	0	0.43	0	0.43	2	N	DL
031044	WANNON NORTH	3.45	0	0	3.45	1	N	DL
031045	WANNON NORTH	0.55	0	0	0.55	1	N	DL
031046	WANNON NORTH	0.39	0	0	0.39	1	N	DL
031047	WANNON NORTH	0.35	0.15	0	0.5	1	N	DL
031047	WANNON NORTH	0.65	0.27	0	0.92	1	N	DL
031047	WANNON NORTH	0.43	0.19	0	0.62	1	N	DL
031048	WANNON NORTH	0	7.06	0	7.06	2	Y	DL
031049	WANNON NORTH	0.65	0	0	0.65	1	N	DL
031050	WANNON NORTH	5.56	2.39	0	7.95	1	N	DL
031051	WANNON NORTH	0.55	0	0	0.55	1	N	DL
031052	WANNON NORTH	0.31	0	0	0.31	1	N	DL
031053	WANNON NORTH	6.83	0	0	6.83	1	N	DL
031054	WANNON NORTH	2.91	0	0	2.91	1	N	DL
031055	WANNON NORTH	0	6.37	0	6.37	2	Y	DL
031056	WANNON NORTH	1.04	0	0	1.04	1	N	DL
031056	WANNON NORTH	1.04	0	0	1.04	1	N	DL
031056	WANNON NORTH	3.96	0	0	3.96	1	N	DL
031057	WANNON NORTH	0.19	0	0	0.19	1	Y	DL
031059	WANNON NORTH	0	5.86	0	5.86	2	N	DL

Site Number	Map Name	Class 1	Class 2	Class 3	Total Area (ha)	Severity	Treatment Discharge	Landscape Position
031060	WANNON NORM	2.51	0	0	2.51	1	N	DL
031061	WANNON NORTH	2.72	0	0	2.72	1	N	DL
031063	WANNON NORTH	2.45	0	0	2.45	1	N	DL
031064	WANNON NORM	0.89	0	0	0.89	1	N	DL
031065	WANNON NORTH	0.44	0	0	0.44	1	N	DL
031065	WANNON NORTH	1.44	0	0	1.44	1	N	DL
031066	WANNON NORTH	0.38	0	0	0.38	1	N	DL
031067	WANNON NORTH	0.86	0	0	0.86	1	Y	DL
031067	WANNON NORTH	8.45	0	0	8.45	1	Y	DL
031068	WANNON NORTH	2.11	0	0	2.11	1	N	DL
031069	WANNON NORTH	5.41	0	0	5.41	1	N	DL
031070	WANNON NORTH	3.48	0	0	3.48	1	N	DL
031070	WANNON NORTH	0.79	0	0	0.79	1	N	DL
031071	WANNON NORTH	0.8	0	0	0.8	1	N	DL
031072	WANNON NORTH	6.47	0	0	6.47	1	N	DL
031073	WANNON NORTH	1.37	0	0	1.37	1	N	DL
031073	WANNON NORTH	17.85	0	0	17.85	1	N	DL
031074	WANNON NORTH	0.75	0	0	0.75	1	N	DL
031074	WANNON NORTH	0.75	0	0	0.75	1	N	DL
031075	WANNON NORTH	4.22	1.06	0	5.28	1	Y	DL
031075	WANNON NORTH	4.22	1.06	0	5.28	1	Y	DL
031076	WANNON NORTH	4.81	0	0	4.81	1	N	DL
031077	WANNON NORTH	1.91	1.28	0	3.19	1	N	DL
031078	WANNON NORTH	2.02	0	0	2.02	1	Y	DL
031079	WANNON NORTH	1.68	0	0	1.68	1	Y	DL
031079	WANNON NORTH	1.68	0	0	1.68	1	Y	DL
031080	WANNON NORTH	2.23	0	0	2.23	1	N	DL
031081	WANNON NORTH	0.79	0.09	0	0.88	1	Y	DL
031084	WANNON NORTH	0.31	0	0	0.31	1	Y	DL
031085	WANNON NORTH	0.41	0	0	0.41	1	N	DL
031086	WANNON NORTH	0.14	0	0	0.14	1	N	DL
031086	WANNON NORTH	0.59	0	0	0.59	1	N	DL

Site Number	Map Name	Class 1	Class 2	Class 3	Total Area (ha)	Severity	Treatment Discharge	Landscape Position
031087	WANNON NORTH	7.72	0	0	7.72	1	Y	DL
031088	WANNON NORTH	0.51	0	0	0.51	1	Y	DL
031088	WANNON NORTH	1.35	0	0	1.35	1	Y	DL
031089	WANNON NORTH	0	3.22	0	3.22	2	N	DL
031090	WANNON NORTH	1.58	0	0	1.58	1	N	DL
031091	WANNON NORTH	35.71	0	0	35.71	1	Y	DL
031092	WANNON NORTH	0.68	0	0	0.68	1	N	DL
031093	WANNON NORTH	3.63	0	0	3.63	1	N	DL
031094	WANNON NORTH	0	1.52	0	1.52	2	Y	DL
031095	WANNON NORTH	5	0	0	5	1	N	DL
031096	WANNON NORTH	0.36	0	0	0.36	1	N	DL
031096	WANNON NORTH	0.36	0	0	0.36	1	N	DL
031096	WANNON NORTH	0.36	0	0	0.36	1	N	DL
031097	WANNON NORTH	1.57	0.39	0	1.96	1	N	DL
031098	WANNON NORTH	4.5	0	0	4.5	1	N	DL
031100	WANNON NORTH	2.84	0	0	2.84	1	N	DL
031101	WANNON NORTH	0	13.4	0	13.4	2	N	DL
031102	WANNON NORTH	0	14.92	0	14.92	2	Y	DL
031103	WANNON NORTH	13.5	0	0	13.5	1	N	DL
031104	WANNON NORTH	21.82	0	0	21.82	1	Y	DL
031105	WANNON NORTH	3.5	0	0	3.5	1	Y	DL
031106	WANNON NORTH	6.82	2.92	0	9.74	1	N	DL
031107	WANNON NORTH	4.9	0	0	4.9	1	N	DL
031108	WANNON NORTH	0.32	0	0	0.32	1	N	DL
031109	WANNON NORTH	0.12	0	0	0.12	1	N	DL
031110	WANNON NORTH	3.28	0	0	3.28	1	N	DL
031111	WANNON NORTH	23.98	0	0	23.98	1	N	DL
031111	WANNON NORTH	0.17	0	0	0.17	1	N	DL
031112	WANNON NORTH	9.1	0	0	9.1	1	N	DL
031113	WANNON NORTH	4.65	0	0	4.65	1	N	BS
031114	WANNON NORTH	0.08	0	0	0.08	1	N	BS
031114	WANNON NORTH	8.26	0	0	8.26	1	N	BS

Site Number	Map Name	Class 1	Class 2	Class 3	Total Area (ha)	Severity	Treatment Discharge	Landscape Position
031115	WANNON NORTH	2.03	0	0	2.03	1	N	BS
031115	WANNON NORTH	2.03	0	0	2.03	1	N	BS
031115	WANNON NORTH	2.03	0	0	2.03	1	N	BS
031115	WANNON NORTH	2.03	0	0	2.03	1	N	BS
031115	WANNON NORTH	1.17	0	0	1.17	1	N	BS
031116	WANNON NORTH	0.46	0	0	0.46	1	N	D
031116	WANNON NORTH	0.83	0	0	0.83	1	N	D
031117	WANNON NORTH	0.64	0	0	0.64	1	N	D
031118	WANNON NORTH	4.28	0	0	4.28	1	N	DL
031119	WANNON NORTH	19.73	0	0	19.73	1	N	D
031119	WANNON NORTH	19.73	0	0	19.73	1	N	D
031119	WANNON NORTH	0.72	0	0	0.72	1	N	D
031119	WANNON NORTH	0.73	0	0	0.73	1	N	D
031120	WANNON NORTH	0.92	0	0	0.92	1	N	D
031120	WANNON NORTH	0.15	0	0	0.15	1	N	D
031121	WANNON NORTH	1.5	0	0	1.5	1	N	D
031122	WANNON NORTH	4.07	0	0	4.07	1	N	DL
031123	WANNON NORTH	12.91	0	0	12.91	1	Y	DL
031123	WANNON NORTH	0.46	0	0	0.46	1	Y	DL
031124	WANNON NORTH	0.86	0	0	0.86	1	Y	DL
031124	WANNON NORTH	8.16	0	0	8.16	1	Y	DL
031124	WANNON NORTH	0.52	0	0	0.52	1	Y	DL
031125	WANNON NORTH	7.94	0	0	7.94	1	Y	DL
031126	WANNON NORTH	1.73	0	0	1.73	1	N	LM
031127	WANNON NORTH	2.07	0	0	2.07	1	Y	DL
031128	WANNON NORTH	3.22	0	0	3.22	1	N	DL
031129	WANNON NORTH	2.38	0	0	2.38	1	N	D
031130	WANNON NORTH	0	3.18	0	3.18	2	N	DL
031131	WANNON NORTH	2.39	0	0	2.39	1	N	DL
031132	WANNON NORTH	8.78	0	0	8.78	1	N	DL
031132	WANNON NORTH	0.14	0	0	0.14	1	N	DL
031133	WANNON NORTH	5.27	0	0	5.27	1	N	DL

Site Number	Map Name	Class 1	Class 2	Class 3	Total Area (ha)	Severity	Treatment Discharge	Landscape Position
031134	WANNON NORTH	2.52	0	0	2.52	1	N	D
031135	WANNON NORTH	2.64	0	0	2.64	1	N	DL
031136	WANNON NORTH	4.32	0	0	4.32	1	N	DL
031137	WANNON NORTH	4.87	0	0	4.87	1	N	D
031138	WANNON NORTH	0.16	0	0	0.16	1	N	D
031138	WANNON NORTH	0.16	0	0	0.16	1	N	D
031138	WANNON NORTH	0.36	0	0	0.36	1	N	D
031138	WANNON NORTH	0.08	0	0	0.08	1	N	D
031138	WANNON NORTH	0.36	0	0	0.36	1	N	D
031138	WANNON NORTH	0.2	0	0	0.2	1	N	D
031138	WANNON NORTH	0.16	0	0	0.16	1	N	D
031139	WANNON NORTH	0.85	0	0	0.85	1	N	D
031139	WANNON NORTH	0.12	0	0	0.12	1	N	D
031140	WANNON NORTH	0.17	0	0	0.17	1	N	D
031140	WANNON NORTH	0.18	0	0	0.18	1	N	D
031140	WANNON NORTH	0.28	0	0	0.28	1	N	D
031141	WANNON NORTH	3.19	0	0	3.19	1	N	D
031142	WANNON NORTH	0	1.98	0	1.98	2	N	D
031143	WANNON NORTH	0.99	0	0	0.99	1	N	DL
031144	WANNON NORTH	0.27	0	0	0.27	1	N	D
031144	WANNON NORTH	0.58	0	0	0.58	1	N	D
031145	WANNON NORTH	2.95	0	0	2.95	1	Y	D
031146	WANNON NORTH	4.72	0	0	4.72	1	Y	DL
031146	WANNON NORTH	0.17	0	0	0.17	1	Y	DL
031146	WANNON NORTH	0.1	0	0	0.1	1	Y	DL
031147	WANNON NORTH	3.01	0	0	3.01	1	N	D
031148	WANNON NORTH	1.36	0	0	1.36	1	N	D
031148	WANNON NORTH	0.9	0	0	0.9	1	N	D
031149	WANNON NORTH	15.18	0	0	15.18	1	N	D
031150	WANNON NORTH	3.05	0.76	0	3.81	1	N	DL
031151	WANNON NORTH	4.97	0	0	4.97	1	N	DL

Site Number	Map Name	Class 1	Class 2	Class 3	Total Area (ha)	Severity	Treatment Discharge	Landscape Position
031155	WANNON NORTH	5.99	0	0	5.99	1	N	DL
031156	WANNON NORTH	8.57	2.14	0	10.71	1	Y	DL
031157	WANNON NORTH	4.36	1.09	0	5.45	1	N	DL
031158	WANNON NORTH	0	11.61	0	11.61	2	Y	DL
031159	WANNON NORTH	11.58	0	0	11.58	1	N	DL
031160	WANNON NORTH	0	7.37	0	7.37	2	N	DL
031161	WANNON NORTH	1-98	0	0	1.98	1	N	D
031162	WANNON NORTH	0.75	0	0	0.75	1	N	D
031163	WANNON NORTH	2.36	0	0	2.36	1	N	D
031164	WANNON NORTH	1.35	0	0	1.35	1	N	D
031165	WANNON NORTH	3.3	0	0	3.3	1	N	D
031166	WANNON NORTH	0	48.93	0	48.93	2	N	DL
031167	WANNON NORTH	0	26	0	26	2	N	DL
031167	WANNON NORTH	0	0	0	0	1	N	DL
031167	WANNON NORTH	0-11	0	0	0.11	1	N	DL
031168	WANNON NORTH	0	0-71	0	0.71	2	N	DL
031169	WANNON NORTH	15.31	1.7	0	17.01	1	Y	DL
031170	WANNON NORTH	2.07	0	0	2.07	1	N	DL
031171	WANNON NORTH	1.75	0	0	1.75	1	Y	DL
031172	WANNON NORTH	0.08	0	0	0.08	1	N	DL
031172	WANNON NORTH	1-16	0	0	1.16	1	N	DL
031173	WANNON NORTH	0-29	0	0	0.29	1	N	D
031174	WANNON NORTH	1.27	0	0	1.27	1	N	DL
031177	WANNON NORTH	5.43	0	0	5.43	1	Y	DL
031178	WANNON NORTH	5-47	0	0	5.47	1	N	DL
031179	WANNON NORTH	0.83	0	0	0.83	1	Y	DL
031180	WANNON NORTH	1.98	0	0	1.98	1	Y	DL
031181	WANNON NORTH	35.08	0	0	35.08	1	Y	DL
031182	WANNON NORM	12.49	0	0	12.49	1	Y	DL
031183	WANNON NORTH	0.49	0	0	0.49	1	N	S
031184	WANNON NORTH	1.09	0	0	1.09	1	N	S
031185	WANNON NORTH	0	0.08	0	0.08	2	Y	DL

Site Number	Map Name	Class 1	Class 2	Class 3	Total Area (ha)	Severity	Treatment Discharge	Landscape Position
031186	WANNON NORTH	0-25	0	0	0.25	1	N	S
031186	WANNON NORTH	0.23	0	0	0.23	1	N	S
031186	WANNON NORTH	0.25	0	0	0.25	1	N	S
031186	WANNON NORTH	0.25	0	0	0.25	1	N	S
031186	WANNON NORTH	0.43	0	0	0.43	1	N	S
031186	WANNON NORTH	0-69	0	0	0.69	1	N	S
031187	WANNON NORTH	1-02	0	0	1.02	1	Y	S
031188	WANNON NORTH	0.43	0	0	0.43	1	N	S
031189	WANNON NORTH	2.37	0	0	2.37	1	N	DL
031190	WANNON NORTH	2.75	0	0	2.75	1	N	DL
031191	WANNON NORTH	6.02	0	0	6.02	1	N	DL
031192	WANNON NORTH	0.47	0	0	0.47	1	N	G
031195	WANNON NORTH	0.33	0	0	0.33	1	N	D
031196	WANNON NORTH	0.2	0	0	0.2	1	N	G
031197	WANNON NORTH	2-71	0.68	0	3.39	1	N	D
031197	WANNON NORTH	0.07	0.01	0	0.08	1	N	D
031198	WANNON NORTH	1.11	0	0	1.11	1	N	DL
031199	WANNON NORTH	0.47	0	0	0.47	1	N	S
031199	WANNON NORTH	0.2	0	0	0.2	1	N	S
031201	WANNON NORTH	1.58	0	0	1.58	1	N	DL
031202	WANNON NORTH	0.46	0	0	0.46	1	N	G
031203	WANNON NORTH	0-05	0.05	0	0.1	2	N	S
031203	WANNON NORTH	0.12	0.12	0	0.24	2	N	S
031204	WANNON NORTH	3.97	0	0	3.97	1	N	D
031205	WANNON NORTH	1.77	0	0	1.77	1	N	S
031206	WANNON NORTH	0.4	0	0	0.4	1	N	DL
031207	WANNON NORTH	0.27	0	0	0.27	1	N	S
031208	WANNON NORTH	0.4	0	0	0.4	1	N	D
031209	WANNON NORTH	1.17	0	0	1.17	1	Y	S
031210	WANNON NORTH	0.33	0	0	0.33	1	Y	S
031221	WANNON NORTH	0-27	0.27	0	0.54	2	N	S
031223	WANNON NORTH	0.49	0	0	0.49	1	N	S

Site Number	Map Name	Class 1	Class 2	Class 3	Total Area (ha)	Severity	Treatment Discharge	Landscape Position
031224	WANNON NORTH	0-74	0	0	0.74	1	Y	S
031225	WANNON NORTH	1.47	0	0	1.47	1	N	S
031225	WANNON NORTH	0.22	0	0	0.22	1	N	S
031226	WANNON NORTH	0.28	0	0	0.28	1	N	S
031227	WANNON NORTH	0.42	0	0	0.42	1	N	S
031228	WANNON NORTH	0.31	0	0	0.31	1	N	S
031229	WANNON NORTH	0.43	0	0	0.43	1	N	S
031231	WANNON NORTH	1.02	0.69	0	1.71	1	N	S
031231	WANNON NORTH	0.35	0.23	0	0.58	1	N	S
031232	WANNON NORTH	0.81	0	0	0.81	1	N	S
031233	WANNON NORTH	0.1	0	0	0.1	1	N	DL
031233	WANNON NORTH	0.1	0	0	0.1	1	N	DL
031233	WANNON NORTH	0.1	0	0	0.1	1	N	DL
031234	WANNON NORTH	3.05	0	0	3.05	1	N	D
031235	WANNON NORTH	15.18	0	0	15.18	1	N	D
031236	WANNON NORTH	0.28	0	0	0.28	1	N	DL
031237	WANNON NORTH	0.14	0-14	0	0.28	2	N	DL
031237	WANNON NORTH	1.92	1.92	0	3.84	2	N	DL
031238	WANNON NORTH	1-78	0	0	1.78	1	N	S
031239	WANNON NORTH	0.21	0	0	0.21	1	N	S
031239	WANNON NORTH	0.06	0	0	0.06	1	N	S
031239	WANNON NORTH	1.01	0	0	1.01	1	N	S
031241	WANNON NORTH	0.78	0	0	0.78	1	N	S
031242	WANNON NORTH	0.77	0	0	0.77	1	N	BS
031243	WANNON NORTH	0.57	0	0	0.57	1	N	BS
031244	WANNON NORTH	0.63	0	0	0.63	1	N	BS
031245	WANNON NORTH	1.34	0	0	1.34	1	N	G
031246	WANNON NORTH	0.34	0	0	0.34	1	N	BS
031248	WANNON NORTH	1.82	0	0	1.82	1	N	DL
031248	WANNON NORTH	0.9	0	0	0.9	1	N	DL
031248	WANNON NORTH	0.76	0	0	0.76	1	N	DL
031248	WANNON NORTH	0.94	0	0	0.94	1	N	DL

Site Number	Map Name	Class 1	Class 2	Class 3	Total Area (ha)	Severity	Treatment Discharge	Landscape Position
031248	WANNON NORTH	1.85	0	0	1.85	1	N	DL
031248	WANNON NORTH	0.76	0	0	0.76	1	N	DL
031249	WANNON NORTH	1.27	0	0	1.27	1	N	DL
031250	WANNON NORTH	8.32	0	0	8.32	1	N	DL
031251	WANNON NORTH	5.13	0	0	5.13	1	N	DL
031252	WANNON NORTH	0.59	0	0	0.59	1	N	BS
031253	WANNON NORTH	8.03	0.9	0	8.93	1	N	D
031254	WANNON NORTH	15.28	0	0	15.28	1	N	DL
031255	WANNON NORTH	2.49	0	0	2.49	1	N	S
031256	WANNON NORTH	0.94	0	0	0.94	1	N	D
031257	WANNON NORTH	14.03	0	0	14.03	1	N	DL
031258	WANNON NORTH	0.72	0	0	0.72	1	N	DL
031258	WANNON NORTH	3.38	0	0	3.38	1	N	DL
031259	WANNON NORTH	6.62	0	0	6.62	1	N	DL
031259	WANNON NORTH	0.28	0	0	0.28	1	N	DL
031260	WANNON NORTH	7.11	0	0	7.11	1	N	DL
031261	WANNON NORTH	0.15	0	0	0.15	1	N	BS
031262	WANNON NORTH	1.42	0	0	1.42	1	N	BS
031263	WANNON NORTH	7.19	0	0	7.19	1	N	DL
031264	WANNON NORTH	4.86	0	0	4.86	1	N	DL
031265	WANNON NORTH	5.79	0	0	5.79	1	N	DL
031266	WANNON NORTH	0.89	0	0	0.89	1	N	DL
031267	WANNON NORTH	9.2	0	0	9.2	1	Y	DL
031268	WANNON NORTH	9.34	0	0	9.34	1	N	DL
031269	WANNON NORTH	4.46	0	0	4.46	1	N	DL
031270	WANNON NORTH	2.48	0	0	2.48	1	N	DL
031271	WANNON NORTH	3.53	0	0	3.53	1	N	DL
031272	WANNON NORTH	7.8	0	0	7.8	1	N	DL
031273	WANNON NORTH	15.77	0	0	15.77	1	N	DL
031274	WANNON NORTH	10.22	0	0	10.22	1	N	DL
031275	WANNON NORTH	8.41	0	0	8.41	1	N	DL
031276	WANNON NORTH	0.22	0	0	0.22	1	N	DL

Site Number	Map Name	Class 1	Class 2	Class 3	Total Area (ha)	Severity	Treatment Discharge	Landscape Position
031276	WANNON NORTH	0.06	0	0	0.06	1	N	DL
031277	WANNON NORM	0.2	0	0	0.2	1	Y	DL
031278	WANNON NORM	0.53	0	0	0.53	1	N	DL
031279	WANNON NORTH	0	0.18	0	0.18	2	Y	DL
031279	WANNON NORTH	0	6.02	0	6.02	2	Y	DL
031280	WANNON NORTH	0.29	0	0	0.29	1	Y	DL
031281	WANNON NORTH	0.41	0	0	0.41	1	Y	DL
031282	WANNON NORTH	0.55	0	0	0.55	1	N	DL
031283	WANNON NORM	7.79	0	0	7.79	1	Y	DL
031284	WANNON NORTH	5.86	0	0	5.86	1	N	DL
031285	WANNON NORM	0.66	0	0	0.66	1	N	DL
031286	WANNON NORTH	1.11	0	0	1.11	1	N	DL
031287	WANNON NORTH	3.98	0	0	3.98	1	N	DL
031289	WANNON NORM	1.39	0	0	1.39	1	N	DL
031290	WANNON NORTH	27.09	0	0	27.09	1	N	DL
031291	WANNON NORTH	2.85	0	0	2.85	1	N	DL
031292	WANNON NORTH	2.82	0	0	2.82	1	N	DL
031294	WANNON NORTH	3.79	3.79	0	7.58	2	N	DL
031295	WANNON NORTH	2.23	0	0	2.23	1	N	DL
031296	WANNON NORTH	4.69	1.57	0	6.26	1	N	DL
031298	WANNON NORTH	6.79	6.79	0	13.58	2	N	DL
031299	WANNON NORTH	0	0.64	0	0.64	2	N	DL
031300	WANNON NORTH	0	7.18	0	7.18	2	N	DL
031303	WANNON NORTH	1.71	1.71	0	3.42	2	N	DL
031304	WANNON NORTH	22.14	22.14	0	44.28	2	N	DL
031306	WANNON NORTH	0.56	0	0	0.56	1	N	DL
031307	WANNON NORTH	3.81	3.81	0	7.62	2	N	DL
031309	WANNON NORTH	5.58	5.58	0	11.16	2	N	DL
031311	WANNON NORTH	0	1.92	0	1.92	2	N	DL
031312	WANNON NORTH	0	0.46	0	0.46	2	N	DL
031313	WANNON NORTH	3.75	0	0	3.75	1	N	DL
031314	WANNON NORTH	0.93	0	0	0.93	1	N	EII,

Site Number	Map Name	Class 1	Class 2	Class 3	Total Area (ha)	Severity	Treatment Discharge	Landscape Position
031315	WANNON NORTH	53.34	0	0	53.34	1	N	DL
031317	WANNON NORTH	4.81	4.81	0	9.62	2	N	DL
031318	WANNON NORTH	6.8	0	0	6.8	1	N	DL
031319	WANNON NORTH	3.49	0	0	3.49	1	N	DL
031320	WANNON NORTH	0.9	0	0	0.9	1	N	DL
031320	WANNON NORTH	0.25	0	0	0.25	1	N	DL
031320	WANNON NORTH	0.48	0	0	0.48	1	N	DL
031321	WANNON NORTH	20.82	20.82	0	41.64	2	N	DL
031323	WANNON NORTH	0	0	12.58	12.58	3	N	DL
031324	WANNON NORTH	0	0	5.05	5.05	3	N	DL
031325	WANNON NORTH	0	7.16	0	7.16	2	N	DL
031326	WANNON NORTH	0	28.1	0	28.1	2	N	DL
031327	WANNON NORTH	0	3.83	0	3.83	2	N	DL
031329	WANNON NORTH	14.12	0	0	14.12	1	N	DL
031329	WANNON NORTH	1.35	0	0	1.35	1	N	DL
031331	WANNON NORTH	8.72	8.72	0	17.44	2	N	DL
031332	WANNON NORTH	0	0.65	0	0.65	2	N	DL
031333	WANNON NORTH	26.23	0	0	26.23	1	N	DL
031334	WANNON NORTH	0	38.84	0	38.84	2	N	DL
031335	WANNON NORTH	0.44	0	0	0.44	1	N	S
031337	WANNON NORTH	0.18	0	0	0.18	1	N	S
031338	WANNON NORTH	0.06	0	0	0.06	1	N	S
031338	WANNON NORTH	0.34	0	0	0.34	1	N	S
031338	WANNON NORTH	0.42	0	0	0.42	1	N	S
031339	WANNON NORTH	0	0.2	0	0.2	2	N	S
031340	WANNON NORTH	0.23	0	0	0.23	1	N	DL
031341	WANNON NORTH	0.2	0.06	0	0.26	1	N	DL
031341	WANNON NORTH	0.43	0-1	0	0.53	1	N	DL
031341	WANNON NORTH	0.74	0.19	0	0.93	1	N	DL
031342	WANNON NORTH	0.24	0	0	0.24	1	N	D
031342	WANNON NORTH	0.11	0	0	0.11	1	N	D
031342	WANNON NORTH	0.43	0	0	0.43	1	N	D

Site Number	Map Name	Class 1	Class 2	Class 3	Total Area (ha)	Severity	Treatment Discharge	Landscape Position
031342	WANNON NORTH	0-33	0	0	0.33	1	N	D
031342	WANNON NORTH	0.28	0	0	0.28	1	N	D
031342	WANNON NORTH	1.78	0	0	1.78	1	N	D
031343	WANNON NORTH	0.13	0.13	0	0.26	2	N	DL
031343	WANNON NORTH	0.31	0.31	0	0.62	2	N	DL
031343	WANNON NORTH	0.16	0-16	0	0.32	2	N	DL
031935	WANNON NORTH	0.47	0	0	0.47	1	N	DL
Grand Total:		3248.907	1506.30	542.52	5297.73			

Appendix 4. SALINITY DISCHARGE SITES IN THE DUNDAS WEST TABLELANDS

Site Number	Map Name	Class 1	Class 2	Class 3	Total Area (ha)	Severity	Treatment Discharge	Landscape Position
030092	COLERAINÉ NORTH	0.1	0.01	0	0.11	1	N	D
030092	COLERAINÉ NORTH	0.59	0.07	0	0.66	1	N	D
030094	COLERAINÉ NORTH	0.38	0	0	0.38	1	N	D
030098	COLERAINÉ NORTH	0.25	0	0	0.25	1	N	F
030099	COLERAINÉ NORTH	0.17	0	0	0.17	1	N	F
030104	COLERAINÉ NORTH	0.04	0.4	0	0.44	2	N	D
030105	COLERAINÉ NORTH	0.17	0.11	0	0.28	1	N	D
030106	COLERAINÉ NORTH	0.03	0.01	0	0.04	1	N	D
030108	COLERAINÉ NORTH	0.19	0.08	0	0.27	1	N	S
030109	COLERAINÉ NORTH	0	0.35	0	0.35	2	N	S
030110	COLERAINÉ NORTH	0	0.04	0.03	0.07	2	N	D
030111	COLERAINÉ NORTH	0.27	0	0	0.27	1	N	D
030112	COLERAINÉ NORTH	0.22	0	0	0.22	1	Y	D
030113	COLERAINÉ NORTH	0.26	0	0	0.26	1	N	S
031345	COLERAINÉ NORTH	2.97	0	0	2.97	1	N	DL
031346	COLERAINÉ NORTH	0.08	0	0	0.08	1	N	DL
031347	COLERAINÉ NORTH	1-52	0	0	1.52	1	N	DL
031348	COLERAINÉ NORTH	0.69	0	0	0.69	1	N	S
031349	COLERAINÉ NORTH	0.79	0	0	0.79	1	N	S
031350	COLERAINÉ NORTH	0.12	0	0	0.12	1	N	S
031351	COLERAINÉ NORTH	0.91	0	0	0.91	1	N	S
031352	COLERAINÉ NORTH	0.66	0	0	0.66	1	N	S
031353	COLERAINÉ NORTH	2.45	0	0	2.45	1	N	S
031354	COLERAINÉ NORTH	0.23	0	0	0.23	1	N	DL
031355	COLERAINÉ NORTH	1.05	0	0	1.05	1	N	S
031356	COLERAINÉ NORTH	1.05	0	0	1.05	1	N	S
031357	COLERAINÉ NORTH	2.25	0	0	2.25	1	N	S
031358	COLERAINÉ NORTH	2.02	0	0	2.02	1	N	DL
031359	COLERAINÉ NORTH	0.3	0	0	0.3	1	N	S

Site Number	Map Name	Class 1	Class 2	Class 3	Total Area (ha)	Severity	Treatment Discharge	Landscape Position
031360	COLERAINE NORTH	1.11	0.12	0	1.23	1	Y	DL
031361	COLERAINE NORTH	1.19	0	0	1.19	1	N	G
031361	COLERAINE NORTH	0.58	0	0	0.58	1	N	G
031362	COLERAINE NORM	0.13	0	0	0.13	1	N	S
031363	COLERAINE NORTH	0.11	0	0	0.11	1	N	S
031364	COLERAINE NORM	0.6	0	0	0.6	1	N	BS
031365	COLERAINE NORTH	0.23	0	0	0.23	1	N	DL
031365	COLERAINE NORTH	10.63	0	0	10.63	1	N	DL
031370	COLERAINE NORTH	0.39	0	0	0.39	1	N	G
031371	COLERAINE NORTH	0.08	0	0	0.08	1	N	G
031371	COLERAINE NORTH	1.27	0	0	1.27	1	N	G
031372	COLERAINE NORTH	0.36	0.36	0	0.72	1	Y	DL
031373	COLERAINE NORTH	0.44	0.44	0	0.88	1	Y	DL
031374	COLERAINE NORTH	0	0.22	0	0.22	2	Y	DL
031375	COLERAINE NORTH	0.09	0	0	0.09	1	N	DL
031375	COLERAINE NORTH	5.24	0	0	5.24	1	N	DL
031376	COLERAINE NORTH	0.16	0	0	0.16	1	N	DL
031377	COLERAINE NORTH	0.78	0	0	0.78	1	N	D
031378	COLERAINE NORTH	12.54	0	0	12.54	1	N	DL
031379	COLERAINE NORTH	0-01	0	0	0.01	1	N	G
031379	COLERAINE NORTH	1.74	0	0	1.74	1	N	G
031381	COLERAINE NORTH	1.81	0	0	1.81	1	N	S
031382	COLERAINE NORTH	0.19	0	0	0.19	1	N	DL
031383	COLERAINE NORTH	4.82	0	0	4.82	1	N	D
031384	COLERAINE NORTH	1.83	0	0	1.83	1	N	DL
031385	COLERAINE NORTH	0.78	0	0	0.78	1	N	D
031395	COLERAINE NORTH	4-61	0	0	4.61	1	N	D
031396	COLERAINE NORTH	15.84	0	0	15.84	1	N	DL
031397	COLERAINE NORM	14.8	0	0	14.8	1	N	DL
031398	COLERAINE NORTH	21.55	0	0	21.55	1	N	G
031399	COLERAINE NORTH	0.24	0	0	0.24	1	N	G
031399	COLERAINE NORTH	0.02	0	0	0.02	1	N	G

Site Number	Map Name	Class 1	Class 2	Class 3	Total Area (ha)	Severity	Treatment Discharge	Landscape Position
031899	COLERAINE NORTH	0.44	0	0	0.44	1	N	D
031900	COLERAINE NORTH	9.29	0	0	9.29	1	N	S
031901	COLERAINE NORTH	0.12	0	0	0.12	1	N	S
031902	COLERAINE NORM	0.98	0	0	0.98	1	N	S
031903	COLERAINE NORTH	0.32	0	0	0.32	1	N	S
031904	COLERAINE NORTH	7.49	0	0	7.49	1	N	D
031905	COLERAINE NORTH	0.02	0	0	0.02	1	N	D
031905	COLERAINE NORTH	4.37	0	0	4.37	1	N	D
031907	COLERAINE NORTH	0.46	0	0	0.46	1	N	G
031910	COLERAINE NORTH	0.2	0	0	0.2	1	N	D
031943	DERGHOLM-CHETWYND	1.836	1.224	0	3.06	1	N	DL
031945	DERGHOLM-CHETWYND	0.48	0.32	0	0.8	1	N	DL
031947	DERGHOLM-CHETWYND	2.292	1.528	0	3.82	1	N	DL
031948	DERGHOLM-CHETWYND	0.588	0.392	0	0.98	1	N	DL
031949	DERGHOLM-CHETWYND	1.16	0	0	1.16	1	N	D
031950	DERGHOLM-CHETWYND	1.236	0.824	0	2.06	1	N	DL
031959	DERGHOLM-CHETWYND	0.747	0.083	0	0.83	1	N	DL
031959	DERGHOLM-CHETWYND	0.513	0-057	0	0.57	1	N	DL
031961	DERGHOLM-CHETWYND	0.68	0	0	0.68	1	N	DL
031961	DERGHOLM-CHETWYND	0.6	0	0	0.6	1	N	DL
031962	DERGHOLM-CHETWYND	6.867	0.763	0	7.63	1	S	DL
031965	DERGHOLM-CHETWYND	0-576	0.064	0	0.64	1	N	DL
031965	DERGHOLM-CHETWYND	1.143	0.127	0	1.27	1	N	DL
031966	DERGHOLM-CHETWYND	1.32	0	0	1.32	1	N	DL
031967	DERGHOLM-CHETWYND	1.09	0	0	1.09	1	N	DL
031970	DERGHOLM-CHETWYND	0-592	0.148	0	0.74	1	Y	DL
031971	DERGHOLM-CHETWYND	1.79	0	0	1.79	1	N	DL
031994	DERGHOLM-CHETWYND	4.83	0	0	4.83	1	N	S
031995	DERGHOLM-CHETWYND	2.7	0	0	2.7	1	N	DL
032001	DERGHOLM-CHETWYND	3.68	0	0	3.68	1	N	DL
032002	DERGHOLM-CHETWYND	0.98	0	0	0.98	1	N	DL
032004	DERGHOLM-CHETWYND	1.19	0	0	1.19	1	N	DL

Site Number	Map Name	Class 1	Class 2	Class 3	Total Area (ha)	Severity	Treatment Discharge	Landscape Position
032005	DERGHOLM-CHETWYND	1.85	0	0	1.85	1	N	DL
032006	DERGHOLM-CHETWYND	1.37	0	0	1.37	1	Y	D
032007	DERGHOLM-CHETWYND	0.75	0	0	0.75	1	Y	DL
032011	DERGHOLM-CHETWYND	22.53	0	0	22.53	1	N	LM
032013	DERGHOLM-CHETWYND	0.93	0	0	0.93	1	N	DL
032014	DERGHOLM-CHETWYND	2.71	0	0	2.71	1	N	DL
032020	DERGHOLM-CHETWYND	5.04	0	0	5.04	1	N	D
032023	DERGHOLM-CHETWYND	2.95	0	0	2.95	1	N	DL
032025	DERGHOLM-CHETWYND	1.95	0	0	1.95	1	N	DL
032905	HARROW - BALMORAL	1.971	0.219	0	2.19	1	N	DL
032906	HARROW - BALMORAL	2.64	0.66	0	3.3	1	N	DL
032908	HARROW - BALMORAL	0.728	0.182	0	0.91	1	N	DL
032916	HARROW - BALMORAL	0.99	0	0	0.99	1	N	DL
032917	HARROW - BALMORAL	3.61	0	0	3.61	1	N	DL
032920	HARROW - BALMORAL	1.89	0	0	1.89	1	N	DL
032920	HARROW - BALMORAL	1.42	0	0	1.42	1	N	DL
032926	HARROW - BALMORAL	0.93	0	0	0.93	1	N	DL
031993	NAREEN - DUNDAS	0	38.73	0	38.73	2	N	DL
032027	NAREEN - DUNDAS	5.63	0	0	5.63	1	N	DL
032028	NAREEN - DUNDAS	0.93	0	0	0.93	1	N	D
032029	NAREEN - DUNDAS	0.16	0	0	0.16	1	N	DL
032029	NAREEN - DUNDAS	14.51	0	0	14.51	1	N	DL
032030	NAREEN - DUNDAS	7.55	0	0	7.55	1	N	DL
032031	NAREEN - DUNDAS	1.7	0	0	1.7	1	N	DL
032032	NAREEN - DUNDAS	4.698	3.132	0	7.83	1	N	DL
032033	NAREEN - DUNDAS	3.72	0	0	3.72	1	N	DL
032034	NAREEN - DUNDAS	3.09	0	0	3.09	1	N	DL
032034	NAREEN - DUNDAS	1.2	0	0	1.2	1	N	DL
032035	NAREEN - DUNDAS	0.74	0	0	0.74	1	N	DL
032035	NAREEN - DUNDAS	8.67	0	0	8.67	1	N	DL
032036	NAREEN - DUNDAS	1.61	0	0	1.61	1	N	DL
032036	NAREEN - DUNDAS	6.48	0	0	6.48	1	N	DL

Site Number	Map Name	Class 1	Class 2	Class 3	Total Area (ha)	Severity	Treatment Discharge	Landscape Position
032037	NAREEN - DUNDAS	11.88	0	0	11.88	1	S	DL
032039	NAREEN - DUNDAS	0.213	0.426	0.071	0.71	2	N	D
032040	NAREEN - DUNDAS	1.73	0	0	1.73	1	N	D
032041	NAREEN - DUNDAS	14.19	0	0	14.19	1	N	DL
032043	NAREEN - DUNDAS	3.45	0	0	3.45	1	Y	D
032044	NAREEN - DUNDAS	0.6	0	0	0.6	1	N	DL
032045	NAREEN - DUNDAS	0.47	0	0	0.47	1	N	DL
032045	NAREEN - DUNDAS	0.57	0	0	0.57	1	N	DL
032045	NAREEN - DUNDAS	0.7	0	0	0.7	1	N	DL
032045	NAREEN - DUNDAS	0.99	0	0	0.99	1	N	DL
032045	NAREEN - DUNDAS	5.48	0	0	5.48	1	N	DL
032045	NAREEN - DUNDAS	6.37	0	0	6.37	1	N	DL
032046	NAREEN - DUNDAS	0.69	0	0	0.69	1	N	DL
032046	NAREEN - DUNDAS	4.68	0	0	4.68	1	N	DL
032047	NAREEN - DUNDAS	12.73	0	0	12.73	1	N	D
032048	NAREEN - DUNDAS	1.82	0	0	1.82	1	N	DL
032049	NAREEN - DUNDAS	0.67	0	0	0.67	1	N	DL
032050	NAREEN - DUNDAS	1.5	0	0	1.5	1	N	DL
032051	NAREEN - DUNDAS	24.21	0	0	24.21	1	N	DL
032053	NAREEN - DUNDAS	12.2	0	0	12.2	1	N	DL
032055	NAREEN - DUNDAS	15-83	0	0	15.83	1	N	DL
032057	NAREEN - DUNDAS	1.61	0	0	1.61	1	S	DL
032058	NAREEN - DUNDAS	9.6215	13.745	4.1235	27.49	2	N	DL
032059	NAREEN - DUNDAS	1.16	0	0	1.16	1	N	D
032060	NAREEN - DUNDAS	0.3	0	0	0.3	1	N	DL
032060	NAREEN - DUNDAS	17	0	0	17	1	N	DL
032061	NAREEN - DUNDAS	0.78	0	0	0.78	1	N	DL
032063	NAREEN - DUNDAS	4.9	0	0	4.9	1	N	DL
032064	NAREEN - DUNDAS	3.8	0-95	0	4.75	1	N	D
032065	NAREEN - DUNDAS	5.42	0	0	5.42	1	N	DL
032066	NAREEN - DUNDAS	4.736	1.184	0	5.92	1	N	DL
032067	NAREEN - DUNDAS	1	0	0	1	1	N	DL

Site Number	Map Name	Class 1	Class 2	Class 3	Total Area (ha)	Severity	Treatment Discharge	Landscape Position
032068	NAREEN - DUNDAS	0	0	0	0	1	N	DL
032068	NAREEN - DUNDAS	0.6	0	0	0.6	1	N	DL
032069	NAREEN - DUNDAS	6.59	0	0	6.59	1	N	DL
032070	NAREEN - DUNDAS	1.98	0	0	1.98	1	N	DL
032071	NAREEN - DUNDAS	0.332	0.498	0	0.83	2	N	DL
032074	NAREEN - DUNDAS	0.68	0	0	0.68	1	N	DL
032075	NAREEN - DUNDAS	1.26	0	0	1.26	1	N	F
032075	NAREEN - DUNDAS	0.82	0	0	0.82	1	N	F
032077	NAREEN - DUNDAS	10.88	0	0	10.88	1	N	DL
032078	NAREEN - DUNDAS	5.78	0	0	5.78	1	N	DL
032079	NAREEN - DUNDAS	7.55	0	0	7.55	1	N	F
032133	NAREEN - DUNDAS	37.5	0	3.75	41.25	1	N	DL
032134	NAREEN - DUNDAS	28.91	0	0	28.91	1	N	DL
032135	NAREEN - DUNDAS	0.116	0-116	0.058	0.29	1	N	DL
032135	NAREEN - DUNDAS	2.904	2.904	1.452	7.26	1	N	DL
032135	NAREEN - DUNDAS	5.084	5.084	2.542	12.71	1	N	DL
032135	NAREEN - DUNDAS	6.26	6.26	3.13	15.65	1	N	DL
032136	NAREEN - DUNDAS	0.26	0.39	0	0.65	2	S	DL
032136	NAREEN - DUNDAS	1.076	1.614	0	2.69	2	S	DL
032136	NAREEN - DUNDAS	0.276	0.414	0	0.69	2	S	DL
032136	NAREEN - DUNDAS	0.012	0.018	0	0.03	2	S	DL
032136	NAREEN - DUNDAS	0.3	0.45	0	0.75	2	S	DL
032137	NAREEN - DUNDAS	8.632	34.528	0	43.16	2	S	DL
032138	NAREEN - DUNDAS	5.942	17.826	5.942	29.71	2	S	DL
032142	NAREEN - DUNDAS	0	0	0	0	1	N	DL
032153	NAREEN - DUNDAS	22.98	0	0	22.98	1	S	DL
032155	NAREEN - DUNDAS	0.54	0	0	0.54	1	N	DL
032155	NAREEN - DUNDAS	0.84	0	0	0.84	1	N	DL
032157	NAREEN - DUNDAS	1.63	0	0	1.63	1	N	DL
032157	NAREEN - DUNDAS	2.5	0	0	2.5	1	N	DL
032158	NAREEN - DUNDAS	5.999	1.714	0.857	8.57	1	S	DL
032159	NAREEN - DUNDAS	10.96	0	0	10.96	1	S	DL

Site Number	Map Name	Class 1	Class 2	Class 3	Total Area (ha)	Severity	Treatment Discharge	Landscape Position
032159	NAREEN - DUNDAS	28-39	0	0	28.39	1	S	DL
032160	NAREEN - DUNDAS	2.05	0	0	2.05	1	N	DL
032161	NAREEN - DUNDAS	0.47	0	0	0.47	1	N	D
032162	NAREEN - DUNDAS	13.53	0	0	13.53	1	N	DL
032163	NAREEN - DUNDAS	0	100	0	100	2	Y	DL
032165	NAREEN - DUNDAS	1.53	0	0	1.53	1	N	DL
032166	NAREEN - DUNDAS	0.4	0	0	0.4	1	N	DL
032167	NAREEN - DUNDAS	0.67	0	0	0.67	1	N	DL
032170	NAREEN - DUNDAS	2.91	0	0	2.91	1	N	DL
032170	NAREEN - DUNDAS	0.84	0	0	0.84	1	N	DL
032175	NAREEN - DUNDAS	1.631	0.3495	0.3495	2.33	1	N	DL
032175	NAREEN - DUNDAS	2.961	0.6345	0.6345	4.23	1	N	DL
032175	NAREEN - DUNDAS	13.888	2.976	2.976	19.84	1	N	DL
032176	NAREEN - DUNDAS	1.02	0	0	1.02	1	N	DL
032178	NAREEN - DUNDAS	3.03	0	0	3.03	1	N	DL
032179	NAREEN - DUNDAS	5.5	0	0	5.5	1	N	D
032181	NAREEN - DUNDAS	1.61	0	0	1.61	1	N	DL
032183	NAREEN - DUNDAS	0.44	0	0	0.44	1	N	D
032184	NAREEN - DUNDAS	0.66	0	0	0.66	1	N	D
032187	NAREEN - DUNDAS	4	0	0	4	1	N	DL
032188	NAREEN - DUNDAS	2.84	0	0	2.84	1	N	DL
032189	NAREEN - DUNDAS	0.61	0	0	0.61	1	N	DL
032189	NAREEN - DUNDAS	0.85	0	0	0.85	1	N	DL
032189	NAREEN - DUNDAS	2.15	0	0	2.15	1	N	DL
032189	NAREEN - DUNDAS	4.4	0	0	4.4	1	N	DL
032190	NAREEN - DUNDAS	2.85	0	0	2.85	1	N	DL
032191	NAREEN - DUNDAS	1.57	0	0	1.57	1	N	S
032192	NAREEN - DUNDAS	0.44	0	0	0.44	1	N	DL
032192	NAREEN - DUNDAS	0-77	0	0	0.77	1	N	DL
032193	NAREEN - DUNDAS	0.31	0	0	0.31	1	N	DL
032193	NAREEN - DUNDAS	0.53	0	0	0.53	1	N	DL
032194	NAREEN - DUNDAS	2.43	0	0	2.43	1	N	D

Site Number	Map Name	Class 1	Class 2	Class 3	Total Area (ha)	Severity	Treatment Discharge	Landscape Position
032195	NAREEN - DUNDAS	0.6	0.15	0	0.75	1	S	DL
032196	NAREEN - DUNDAS	0.47	0	0	0.47	1	N	DL
032197	NAREEN - DUNDAS	0.74	0	0	0.74	1	N	D
032198	NAREEN - DUNDAS	0	0	0	0	1	N	DL
032199	NAREEN - DUNDAS	17.163	1.907	0	19.07	1	N	DL
032200	NAREEN - DUNDAS	1.3	0	0	1.3	1	N	S
032201	NAREEN - DUNDAS	2.84	0	0	2.84	1	N	S
032202	NAREEN - DUNDAS	1.19	0	0	1.19	1	Y	DL
032203	NAREEN - DUNDAS	1.47	0	0	1.47	1	N	DL
032204	NAREEN - DUNDAS	0.93	0	0	0.93	1	N	DL
032205	NAREEN - DUNDAS	0.91	0	0	0.91	1	N	DL
032206	NAREEN - DUNDAS	2.33	0	0	2.33	1	N	DL
032212	NAREEN - DUNDAS	1.65	0	0	1.65	1	N	DL
032212	NAREEN - DUNDAS	2.57	0	0	2.57	1	N	DL
032212	NAREEN - DUNDAS	0.78	0	0	0.78	1	N	DL
032213	NAREEN - DUNDAS	0.62	0	0	0.62	1	N	DL
032214	NAREEN - DUNDAS	2.2995	11.4975	0	13.797	1	S	DL
032215	NAREEN - DUNDAS	1.376	0.344	0	1.72	1	N	DL
032216	NAREEN - DUNDAS	2.24	1.792	0.448	4.48	1	N	DL
032216	NAREEN - DUNDAS	4.43	3.544	0.886	8.86	1	N	DL
032217	NAREEN - DUNDAS	3.28	0.82	0	4.1	1	N	DL
032217	NAREEN - DUNDAS	13.088	3.272	0	16.36	1	N	DL
032218	NAREEN - DUNDAS	0.6	0.6	0	1.2	2	S	DL
032218	NAREEN - DUNDAS	2.24	2.24	0	4.48	2	S	DL
032220	NAREEN - DUNDAS	11.31	0	0	11.31	1	N	DL
032221	NAREEN - DUNDAS	0	0	0	0	1	Y	DL
032221	NAREEN - DUNDAS	0.84	0	0	0.84	1	Y	DL
032221	NAREEN - DUNDAS	1.2	0	0	1.2	1	Y	DL
032222	NAREEN - DUNDAS	0.506	2.024	0	2.53	2	Y	DL
032222	NAREEN - DUNDAS	6.57	26.28	0	32.85	2	Y	DL
032223	NAREEN - DUNDAS	0.63	0.225	0.045	0.9	1	S	DL
032223	NAREEN - DUNDAS	0.959	0.3425	0.0685	1.37	1	S	DL

Site Number	Map Name	Class 1	Class 2	Class 3	Total Area (ha)	Severity	Treatment Discharge	Landscape Position
032223	NAREEN - DUNDAS	2.17	0-775	0.155	3.1	1	S	DL
032224	NAREEN - DUNDAS	0	25.87	0	25.87	2	Y	DL
032225	NAREEN - DUNDAS	3.108	0.888	0.444	4.44	1	N	G
032225	NAREEN - DUNDAS	5.019	1.434	0.717	7.17	1	N	G
032226	NAREEN - DUNDAS	5.104	1.276	0	6.38	1	N	DL
032227	NAREEN - DUNDAS	8.939	2.554	1.277	12.77	1	N	DL
032228	NAREEN - DUNDAS	0.786	0.524	0	1.31	1	S	DL
032230	NAREEN - DUNDAS	0.632	0-158	0	0.79	1	N	DL
032230	NAREEN - DUNDAS	8.896	2-224	0	11.12	1	N	DL
032230	NAREEN - DUNDAS	1.64	0.41	0	2.05	1	N	DL
032230	NAREEN - DUNDAS	1.576	0.394	0	1.97	1	N	DL
032230	NAREEN - DUNDAS	0.968	0.242	0	1.21	1	N	DL
032230	NAREEN - DUNDAS	0.408	0.102	0	0.51	1	N	DL
032230	NAREEN - DUNDAS	0.368	0.092	0	0.46	1	N	DL
032230	NAREEN - DUNDAS	0.28	0.07	0	0.35	1	N	DL
032230	NAREEN - DUNDAS	0-68	0.17	0	0.85	1	N	DL
032261	NAREEN - DUNDAS	13.01	0	0	13.01	1	N	DL
032264	NAREEN - DUNDAS	0.37	0	0	0.37	1	N	DL
032265	NAREEN - DUNDAS	1.01	0	0	1.01	1	N	DL
032267	NAREEN - DUNDAS	0.87	0	0	0.87	1	N	D
032268	NAREEN - DUNDAS	1.9	0	0	1.9	1	N	DL
032269	NAREEN - DUNDAS	0.44	0	0	0.44	1	S	DL
032270	NAREEN - DUNDAS	3.23	0	0	3.23	1	N	DL
032271	NAREEN - DUNDAS	0.72	0	0	0-72	1	N	DL
032272	NAREEN - DUNDAS	2.63	0	0	2.63	1	N	DL
032273	NAREEN - DUNDAS	1.24	0	0	1.24	1	N	DL
032274	NAREEN - DUNDAS	1.05	0	0	1.05	1	S	DL
032275	NAREEN - DUNDAS	1.67	0	0	1.67	1	N	D
032276	NAREEN - DUNDAS	1-968	0-492	0	2.46	1	S	D
032277	NAREEN - DUNDAS	0.42	0	0	0.42	1	N	D
032278	NAREEN - DUNDAS	1.09	0	0	1.09	1	Y	DL
032279	NAREEN - DUNDAS	1.04	0	0	1.04	1	N	DL

Site Number	Map Name	Class 1	Class 2	Class 3	Total Area (ha)	Severity	Treatment Discharge	Landscape Position
032281	NAREEN - DUNDAS	0.34	0	0	0.34	1	S	DL
032281	NAREEN - DUNDAS	0.42	0	0	0.42	1	S	DL
032281	NAREEN - DUNDAS	0.45	0	0	0.45	1	S	DL
032374	NAREEN - DUNDAS	1.044	0.116	0	1.16	1	S	DL
032374	NAREEN - DUNDAS	2.16	0.24	0	2.4	1	S	DL
032376	NAREEN - DUNDAS	3.006	0.334	0	3.34	1	N	DL
032377	NAREEN - DUNDAS	3.34	0	0	3.34	1	N	DL
032378	NAREEN - DUNDAS	5-52	0	0	5.52	1	N	DL
032379	NAREEN - DUNDAS	0.5	0	0	0.5	1	N	DL
032380	NAREEN - DUNDAS	0-5	0	0	0.5	1	N	S
032380	NAREEN - DUNDAS	1.09	0	0	1.09	1	N	S
032381	NAREEN - DUNDAS	2.21	0	0	2.21	1	N	DL
032382	NAREEN - DUNDAS	2.91	0	0	2.91	1	N	DL
032387	NAREEN - DUNDAS	1.31	0	0	1.31	1	N	DL
032388	NAREEN - DUNDAS	1.11	0	0	1.11	1	N	DL
032389	NAREEN - DUNDAS	1.16	0	0	1.16	1	N	DL
032390	NAREEN - DUNDAS	0.28	0	0	0.28	1	N	S
032391	NAREEN - DUNDAS	2.25	0.25	0	2.5	1	N	DL
032392	NAREEN - DUNDAS	9-72	0	0	9.72	1	N	DL
032393	NAREEN - DUNDAS	4.408	1.102	0	5.51	1	S	DL
032393	NAREEN - DUNDAS	12-4	3.1	0	15.5	1	S	DL
032396	NAREEN - DUNDAS	0.423	0.047	0	0.47	1	S	DL
032396	NAREEN - DUNDAS	0.909	0.101	0	1.01	1	S	DL
032397	NAREEN - DUNDAS	1.197	0.133	0	1.33	1	N	DL
032397	NAREEN - DUNDAS	1-26	0.14	0	1.4	1	N	DL
032401	NAREEN - DUNDAS	1.54	0	0	1.54	1	N	DL
032402	NAREEN - DUNDAS	5.64	0	0	5.64	1	N	DL
032403	NAREEN - DUNDAS	4.66	0	0	4.66	1	N	DL
032404	NAREEN - DUNDAS	0.37	0	0	0.37	1	N	D
032404	NAREEN - DUNDAS	1.55	0	0	1.55	1	N	D
032405	NAREEN - DUNDAS	1.01	0	0	1.01	1	N	S
032406	NAREEN - DUNDAS	3.59	0	0	3.59	1	N	DL

Site Number	Map Name	Class 1	Class 2	Class 3	Total Area (ha)	Severity	Treatment Discharge	Landscape Position
032407	NAREEN - DUNDAS	2.09	0	0	2.09	1	N	S
032408	NAREEN - DUNDAS	2.8	0	0	2.8	1	N	DL
032409	NAREEN - DUNDAS	3.192	0.168	0	3.36	1	N	DL
032410	NAREEN - DUNDAS	2.35	0	0	2.35	1	N	DL
032411	NAREEN - DUNDAS	0.513	0.057	0	0.57	1	N	S
032412	NAREEN - DUNDAS	2.484	0.276	0	2.76	1	N	S
032413	NAREEN - DUNDAS	14.1	0	0	14.1	1	N	DL
032415	NAREEN - DUNDAS	15.147	1.683	0	16.83	1	N	DL
032416	NAREEN - DUNDAS	3.24	0	0	3.24	1	N	DL
032417	NAREEN - DUNDAS	5.3	0	0	5.3	1	Y	DL
032418	NAREEN - DUNDAS	1.899	0.211	0	2.11	1	N	S
032419	NAREEN - DUNDAS	0.639	0.071	0	0.71	1	N	S
032419	NAREEN - DUNDAS	0.846	0.094	0	0.94	1	N	S
032419	NAREEN - DUNDAS	2.745	0.305	0	3.05	1	N	S
032420	NAREEN - DUNDAS	1.4	0	0	1.4	1	N	D
032421	NAREEN - DUNDAS	0.52	0	0	0.52	1	N	D
032422	NAREEN - DUNDAS	3.98	0	0	3.98	1	Y	DL
032424	NAREEN - DUNDAS	8.54	0	0	8.54	1	N	DL
032424	NAREEN - DUNDAS	0	0	0	0	1	N	DL
032425	NAREEN - DUNDAS	9.936	1.104	0	11.04	1	N	DL
032426	NAREEN - DUNDAS	12.57	0	0	12.57	1	N	DL
032427	NAREEN - DUNDAS	15.165	1.685	0	16.85	1	N	DL
032428	NAREEN - DUNDAS	21.03	0	0	21.03	1	N	DL
032429	NAREEN - DUNDAS	20.9695	3.7005	0	24.67	1	S	DL
032430	NAREEN - DUNDAS	12.53	0	0	12.53	1	N	DL
032432	NAREEN - DUNDAS	3.02	0	0	3.02	1	N	S
032433	NAREEN - DUNDAS	0.48	0	0	0.48	1	N	DL
032434	NAREEN - DUNDAS	0	0	0	0	1	N	DL
032437	NAREEN - DUNDAS	1.593	0.177	0	1.77	1	N	BS
032438	NAREEN - DUNDAS	1.15	0	0	1.15	1	N	S
032439	NAREEN - DUNDAS	1.57	0	0	1.57	1	N	BS
032441	NAREEN - DUNDAS	9.729	1.081	0	10.81	1	Y	DL

Site Number	Map Name	Class 1	Class 2	Class 3	Total Area (ha)	Severity	Treatment Discharge	Landscape Position
032442	NAREEN - DUNDAS	1.608	0.402	0	2.01	1	N	D
032447	NAREEN - DUNDAS	0.05	0	0	0.05	1	N	DL
032447	NAREEN - DUNDAS	2.77	0	0	2.77	1	N	DL
032447	NAREEN - DUNDAS	29.14	0	0	29.14	1	N	DL
032449	NAREEN - DUNDAS	1.64	0	0	1.64	1	N	DL
032450	NAREEN - DUNDAS	0.51	0	0	0.51	1	N	DL
032451	NAREEN - DUNDAS	5.136	3.424	0	8.56	1	Y	DL
032452	NAREEN - DUNDAS	4.104	2.736	0	6.84	1	N	DL
032453	NAREEN - DUNDAS	2.97	1.98	0	4.95	1	N	DL
032454	NAREEN - DUNDAS	0.45	0	0	0.45	1	N	DL
032455	NAREEN - DUNDAS	1.87	0	0	1.87	1	N	DL
032455	NAREEN - DUNDAS	8.39	0	0	8.39	1	N	DL
032456	NAREEN - DUNDAS	1.312	0.328	0	1.64	1	S	DL
032457	NAREEN - DUNDAS	0.954	0.106	0	1.06	1	N	DL
032457	NAREEN - DUNDAS	2.709	0.301	0	3.01	1	N	DL
032459	NAREEN - DUNDAS	0.39	0	0	0.39	1	S	DL
032459	NAREEN - DUNDAS	1.86	0	0	1.86	1	S	DL
032459	NAREEN - DUNDAS	4.74	0	0	4.74	1	S	DL
032460	NAREEN - DUNDAS	1.39	0	0	1.39	1	S	DL
032463	NAREEN - DUNDAS	0.36	0.09	0	0.45	1	S	DL
032463	NAREEN - DUNDAS	4.696	1.174	0	5.87	1	S	DL
032464	NAREEN - DUNDAS	0.6	0	0	0.6	1	N	D
032464	NAREEN - DUNDAS	1.12	0	0	1.12	1	N	D
032466	NAREEN - DUNDAS	5.68	0	0	5.68	1	N	DL
032467	NAREEN - DUNDAS	0.39	0	0	0.39	1	N	DL
032467	NAREEN - DUNDAS	0.52	0	0	0.52	1	N	DL
032468	NAREEN - DUNDAS	2.39	0	0	2.39	1	N	DL
032470	NAREEN - DUNDAS	9.65	0	0	9.65	1	N	DL
032473	NAREEN - DUNDAS	6.02	0	0	6.02	1	N	D
032475	NAREEN - DUNDAS	2.56	0	0	2.56	1	N	DL
032476	NAREEN - DUNDAS	3.03	0	0	3.03	1	N	DL
032478	NAREEN - DUNDAS	0.406	0.174	0	0.58	1	N	DL

Site Number	Map Name	Class 1	Class 2	Class 3	Total Area (ha)	Severity	Treatment Discharge	Landscape Position
032478	NAREEN - DUNDAS	3.766	1.614	0	5.38	1	N	DL
032478	NAREEN - DUNDAS	0.791	0.339	0	1.13	1	N	DL
032478	NAREEN - DUNDAS	0.147	0.063	0	0.21	1	N	DL
032478	NAREEN - DUNDAS	0.84	0.36	0	1.2	1	N	DL
032478	NAREEN - DUNDAS	3.766	1.614	0	5.38	1	N	DL
032478	NAREEN - DUNDAS	0.28	0.12	0	0.4	1	N	DL
032484	NAREEN - DUNDAS	2.322	0.258	0	2.58	1	N	DL
032486	NAREEN - DUNDAS	1.128	0.282	0	1.41	1	S	DL
032488	NAREEN - DUNDAS	1.09	0	0	1.09	1	N	DL
032489	NAREEN - DUNDAS	0.444	1.036	0	1.48	2	N	DL
032489	NAREEN - DUNDAS	0.585	1.365	0	1.95	2	N	DL
032489	NAREEN - DUNDAS	0.444	1.036	0	1.48	2	N	DL
032489	NAREEN - DUNDAS	0.366	0.854	0	1.22	2	N	DL
032489	NAREEN - DUNDAS	0.192	0.448	0	0.64	2	N	DL
032490	NAREEN - DUNDAS	0.53	0	0	0.53	1	N	DL
032490	NAREEN - DUNDAS	3.01	0	0	3.01	1	N	DL
032490	NAREEN - DUNDAS	0.49	0	0	0.49	1	N	DL
032491	NAREEN - DUNDAS	3.228	2.152	0	5.38	1	N	DL
032491	NAREEN - DUNDAS	4.776	3.184	0	7.96	1	N	DL
032492	NAREEN - DUNDAS	2.472	1.648	0	4.12	1	N	DL
032492	NAREEN - DUNDAS	0.582	0.388	0	0.97	1	N	DL
032492	NAREEN - DUNDAS	3.51	2.34	0	5.85	1	N	DL
032492	NAREEN - DUNDAS	0.81	0.54	0	1.35	1	N	DL
032492	NAREEN - DUNDAS	0.594	0.396	0	0.99	1	N	DL
032492	NAREEN - DUNDAS	1.29	0.86	0	2.15	1	N	DL
032493	NAREEN - DUNDAS	12.621	5.409	0	18.03	1	N	DL
032494	NAREEN - DUNDAS	3.97	0	0	3.97	1	N	DL
032495	NAREEN - DUNDAS	0.351	0.039	0	0.39	1	N	DL
032495	NAREEN - DUNDAS	0.711	0.079	0	0.79	1	N	DL
032495	NAREEN - DUNDAS	1.386	0.154	0	1.54	1	N	DL
032495	NAREEN - DUNDAS	1.665	0.185	0	1.85	1	N	DL
032496	NAREEN - DUNDAS	0.23	0	0	0.23	1	N	DL

Site Number	Map Name	Class 1	Class 2	Class 3	Total Area (ha)	Severity	Treatment Discharge	Landscape Position
032496	NAREEN - DUNDAS	5.31	0	0	5.31	1	N	DL
032498	NAREEN - DUNDAS	3.18	0	0	3.18	1	N	DL
032499	NAREEN - DUNDAS	3	0	0	3	1	N	DL
032500	NAREEN - DUNDAS	1.59	0	0	1.59	1	N	DL
032503	NAREEN - DUNDAS	1.232	0.308	0	1.54	1	N	DL
032506	NAREEN - DUNDAS	3.56	0	0	3.56	1	N	DL
032507	NAREEN - DUNDAS	3.07	0	0	3.07	1	N	DL
032507	NAREEN - DUNDAS	1.19	0	0	1.19	1	N	DL
032507	NAREEN - DUNDAS	1.25	0	0	1.25	1	N	DL
032509	NAREEN - DUNDAS	3.321	0.369	0	3.69	1	S	DL
032513	NAREEN - DUNDAS	4.095	0.455	0	4.55	1	N	DL
032514	NAREEN - DUNDAS	0.693	0.297	0	0.99	1	S	DL
032514	NAREEN - DUNDAS	1.477	0.633	0	2.11	1	S	DL
032515	NAREEN - DUNDAS	0.553	0.237	0	0.79	1	N	DL
032519	NAREEN - DUNDAS	0.66	0	0	0.66	1	N	DL
032520	NAREEN - DUNDAS	2.34	0	0	2.34	1	N	DL
032521	NAREEN - DUNDAS	2.79	0	0	2.79	1	N	DL
032522	NAREEN - DUNDAS	1.764	0.196	0	1.96	1	N	DL
032522	NAREEN - DUNDAS	2.034	0.226	0	2.26	1	N	DL
032522	NAREEN - DUNDAS	1.332	0.148	0	1.48	1	N	DL
032524	NAREEN - DUNDAS	4.09	0	0	4.09	1	N	DL
032525	NAREEN - DUNDAS	5.96	0	0	5.96	1	N	DL
032526	NAREEN - DUNDAS	0.48	0	0	0.48	1	N	DL
032527	NAREEN - DUNDAS	0.304	0.016	0	0.32	1	N	DL
032528	NAREEN - DUNDAS	0.57	0	0	0.57	1	N	DL
032529	NAREEN - DUNDAS	3.16	0.79	0	3.95	1	N	DL
032529	NAREEN - DUNDAS	3.6	0.9	0	4.5	1	N	DL
032529	NAREEN - DUNDAS	2.576	0.644	0	3.22	1	N	DL
032529	NAREEN - DUNDAS	1.016	0.254	0	1.27	1	N	DL
032529	NAREEN - DUNDAS	2.896	0.724	0	3.62	1	N	DL
032530	NAREEN - DUNDAS	2.538	0.282	0	2.82	1	S	DL

Site Number	Map Name	Class 1	Class 2	Class 3	Total Area (ha)	Severity	Treatment Discharge	Landscape Position
032531	NAREEN - DUNDAS	2.034	1.356	0	3.39	1	S	DL
032531	NAREEN - DUNDAS	6.264	4.176	0	10.44	1	S	DL
032537	NAREEN - DUNDAS	0.828	0.092	0	0.92	1	N	DL
032537	NAREEN - DUNDAS	1.368	0.152	0	1.52	1	N	DL
032539	NAREEN - DUNDAS	1.86	0	0	1.86	1	N	DL
032541	NAREEN - DUNDAS	3.36	0.84	0	4.2	1	N	DL
032545	NAREEN - DUNDAS	1.62	0	0	1.62	1	N	DL
032546	NAREEN - DUNDAS	0.69	0	0	0.69	1	N	DL
032547	NAREEN - DUNDAS	1.17	0	0	1.17	1	N	DL
032548	NAREEN - DUNDAS	1.01	0	0	1.01	1	N	DL
032549	NAREEN - DUNDAS	1.93	0	0	1.93	1	N	DL
032551	NAREEN - DUNDAS	4.99	0	0	4.99	1	N	DL
032553	NAREEN - DUNDAS	0.31	0	0	0.31	1	N	DL
032553	NAREEN - DUNDAS	0.39	0	0	0.39	1	N	DL
032555	NAREEN - DUNDAS	1.15	0	0	1.15	1	N	DL
032555	NAREEN - DUNDAS	2.66	0	0	2.66	1	N	DL
032556	NAREEN - DUNDAS	1.13	0	0	1.13	1	N	DL
032558	NAREEN - DUNDAS	0.88	0	0	0.88	1	N	S
032559	NAREEN - DUNDAS	5.24	0	0	5.24	1	N	DL
032560	NAREEN - DUNDAS	0.47	0	0	0.47	1	Y	DL
032560	NAREEN - DUNDAS	0.95	0	0	0.95	1	Y	DL
032560	NAREEN - DUNDAS	1.79	0	0	1.79	1	Y	DL
032561	NAREEN - DUNDAS	0	0.79	0	0.79	2	N	DL
032562	NAREEN - DUNDAS	1.29	0	0	1.29	1	N	D
032563	NAREEN - DUNDAS	0.5	0	0	0.5	1	N	DL
032564	NAREEN - DUNDAS	0.21	0	0	0.21	1	N	D
032564	NAREEN - DUNDAS	0.22	0	0	0.22	1	N	D
032565	NAREEN - DUNDAS	0.776	0.194	0	0.97	1	N	S
032566	NAREEN - DUNDAS	2.12	0	0	2.12	1	N	DL
032567	NAREEN - DUNDAS	1.15	0	0	1.15	1	N	S
032568	NAREEN - DUNDAS	0.3	0	0	0.3	1	N	DL
032568	NAREEN - DUNDAS	1.78	0	0	1.78	1	N	DL

Site Number	Map Name	Class 1	Class 2	Class 3	Total Area (ha)	Severity	Treatment Discharge	Landscape Position
032569	NAREEN - DUNDAS	1.304	0.326	0	1.63	1	N	DL
032569	NAREEN - DUNDAS	0.584	0.146	0	0.73	1	N	DL
032569	NAREEN - DUNDAS	0.384	0.096	0	0.48	1	N	DL
032570	NAREEN - DUNDAS	0.74	0	0	0.74	1	N	S
032571	NAREEN - DUNDAS	3.069	0.341	0	3.41	1	N	DL
032572	NAREEN - DUNDAS	3.14	0	0	3.14	1	N	DL
032573	NAREEN - DUNDAS	0.73	0	0	0.73	1	N	S
032574	NAREEN - DUNDAS	0.65	0	0	0.65	1	N	DL
032574	NAREEN - DUNDAS	1.27	0	0	1.27	1	N	DL
032575	NAREEN - DUNDAS	1.14	0	0	1.14	1	S	S
032575	NAREEN - DUNDAS	7	0	0	7	1	S	S
032576	NAREEN - DUNDAS	0.44	0	0	0.44	1	N	DL
032576	NAREEN - DUNDAS	0.31	0	0	0.31	1	N	DL
032577	NAREEN - DUNDAS	11.47	0	0	11.47	1	N	DL
032577	NAREEN - DUNDAS	1.81	0	0	1.81	1	N	DL
032577	NAREEN - DUNDAS	1	0	0	1	1	N	DL
032577	NAREEN - DUNDAS	1.41	0	0	1.41	1	N	DL
032579	NAREEN - DUNDAS	5-32	0	0	5.32	1	N	D
032582	NAREEN - DUNDAS	0.98	0	0	0.98	1	N	D
032583	NAREEN - DUNDAS	2.83	0	0	2.83	1	N	DL
032584	NAREEN - DUNDAS	0-47	0.47	0	0.94	2	S	DL
032584	NAREEN - DUNDAS	11.04	11.04	0	22.08	2	S	DL
032585	NAREEN - DUNDAS	2-73	1.82	0	4.55	1	N	DL
032586	NAREEN - DUNDAS	10.04	2.51	0	12.55	1	N	DL
032587	NAREEN - DUNDAS	0.98	0	0	0.98	1	N	S
032589	NAREEN - DUNDAS	0.52	0	0	0.52	1	N	BS
032590	NAREEN - DUNDAS	1.73	0	0	1.73	1	N	BS
032593	NAREEN - DUNDAS	1.53	0.17	0	1.7	1	N	DL
032594	NAREEN - DUNDAS	0.176	0.044	0	0.22	1	S	DL
032594	NAREEN - DUNDAS	1.512	0.378	0	1.89	1	S	DL
032597	NAREEN - DUNDAS	12.152	3.038	0	15.19	1	N	BS
032598	NAREEN - DUNDAS	1.43	0	0	1.43	1	N	DL

Site Number	Map Name	Class 1	Class 2	Class 3	Total Area (ha)	Severity	Treatment Discharge	Landscape Position
032598	NAREEN - DUNDAS	0.97	0	0	0.97	1	N	DL
032599	NAREEN - DUNDAS	0.71	0	0	0.71	1	N	D
032600	NAREEN - DUNDAS	2.205	0-245	0	2.45	1	N	DL
032601	NAREEN - DUNDAS	1.04	0-26	0	1.3	1	N	DL
032601	NAREEN - DUNDAS	3.136	0.784	0	3.92	1	N	DL
032602	NAREEN - DUNDAS	12.061	5.169	0	17.23	1	S	DL
032604	NAREEN - DUNDAS	13.338	1.482	0	14.82	1	N	D
032605	NAREEN - DUNDAS	8.342	33.368	0	41.71	2	S	DL
032606	NAREEN - DUNDAS	17.793	1-977	0	19.77	1	N	D
032607	NAREEN - DUNDAS	1.06	0	0	1.06	1	N	DL
032607	NAREEN - DUNDAS	3.17	0	0	3.17	1	N	DL
032608	NAREEN - DUNDAS	21.15	14.1	0	35.25	1	S	D
032609	NAREEN - DUNDAS	2.233	0.957	0	3.19	1	N	DL
032610	NAREEN - DUNDAS	7.135	7.135	0	14.27	2	N	DL
032611	NAREEN - DUNDAS	0.65	0	0	0.65	1	N	D
032612	NAREEN - DUNDAS	7.344	1.836	0	9.18	1	N	D
032613	NAREEN - DUNDAS	6.16	1.54	0	7.7	1	N	D
032614	NAREEN - DUNDAS	21.4	5.35	0	26.75	1	N	D
032615	NAREEN - DUNDAS	1.936	0.484	0	2.42	1	S	DL
032616	NAREEN - DUNDAS	8.12	0	0	8.12	1	Y	DL
032617	NAREEN - DUNDAS	6.84	0.76	0	7.6	1	N	DL
032618	NAREEN - DUNDAS	1.141	0.489	0	1.63	1	S	DL
032618	NAREEN - DUNDAS	5.012	2.148	0	7.16	1	S	DL
032619	NAREEN - DUNDAS	3	0	0	3	1	N	DL
032621	NAREEN - DUNDAS	2.36	0.59	0	2.95	1	N	BS
032623	NAREEN - DUNDAS	3-61	0	0	3.61	1	N	DL
032624	NAREEN - DUNDAS	16.317	1.813	0	18.13	1	N	DL
032624	NAREEN - DUNDAS	0.36	0.04	0	0.4	1	N	DL
032624	NAREEN - DUNDAS	3.555	0.395	0	3.95	1	N	DL
032624	NAREEN - DUNDAS	3.852	0.428	0	4.28	1	N	DL
032625	NAREEN - DUNDAS	17.96	0	0	17.96	1	N	D
032626	NAREEN - DUNDAS	0.95	0	0	0.95	1	N	DL

Site Number	Map Name	Class 1	Class 2	Class 3	Total Area (ha)	Severity	Treatment Discharge	Landscape Position
032626	NAREEN - DUNDAS	1.51	0	0	1.51	1	N	DL
032627	NAREEN - DUNDAS	3.67	0	0	3.67	1	N	DL
032628	NAREEN - DUNDAS	3.1445	0.1655	0	3-31	1	Y	DL
032629	NAREEN - DUNDAS	1.76	0	0	1.76	1	Y	DL
032630	NAREEN - DUNDAS	1.98	0	0	1.98	1	N	BS
032632	NAREEN - DUNDAS	0.72	0.08	0	0.8	1	N	DL
032633	NAREEN - DUNDAS	0.686	0.294	0	0.98	1	S	DL
032634	NAREEN - DUNDAS	4.99	4.99	0	9.98	2	S	DL
032636	NAREEN - DUNDAS	21.63	0	0	21.63	1	N	D
032637	NAREEN - DUNDAS	2.48	0	0	2.48	1	N	DL
032637	NAREEN - DUNDAS	1.54	0	0	1.54	1	N	DL
032638	NAREEN - DUNDAS	3.23	0	0	3.23	1	N	D
032639	NAREEN - DUNDAS	12.896	3.224	0	16.12	1	N	DL
032640	NAREEN - DUNDAS	10.336	2.584	0	12.92	1	N	DL
032641	NAREEN - DUNDAS	1.428	0.952	0	2.38	1	N	DL
032641	NAREEN - DUNDAS	0.75	0.5	0	1.25	1	N	DL
032641	NAREEN - DUNDAS	0.486	0.324	0	0.81	1	N	DL
032641	NAREEN - DUNDAS	0.294	0-196	0	0.49	1	N	DL
032641	NAREEN - DUNDAS	3.054	2.036	0	5.09	1	N	DL
032642	NAREEN - DUNDAS	2-584	0.646	0	3.23	1	N	DL
032644	NAREEN - DUNDAS	9.468	1.052	0	10.52	1	S	DL
032645	NAREEN - DUNDAS	3.03	0	0	3.03	1	N	DL
032646	NAREEN - DUNDAS	1.376	0.344	0	1.72	1	N	DL
032647	NAREEN - DUNDAS	7.47	0.83	0	8.3	1	Y	DL
032648	NAREEN - DUNDAS	1.488	0.372	0	1.86	1	N	DL
032649	NAREEN - DUNDAS	0.77	0	0	0.77	1	N	S
032650	NAREEN - DUNDAS	3.154	0.166	0	3.32	1	N	BS
032651	NAREEN - DUNDAS	0.624	0.156	0	0.78	1	N	D
032652	NAREEN - DUNDAS	0.664	0.996	0	1.66	2	N	DL
032653	NAREEN - DUNDAS	3.91	3.91	0	7.82	2	S	DL
032654	NAREEN - DUNDAS	12.951	1.439	0	14.39	1	N	DL
032655	NAREEN - DUNDAS	0.819	0.351	0	1.17	1	Y	DL

Site Number	Map Name	Class 1	Class 2	Class 3	Total Area (ha)	Severity	Treatment Discharge	Landscape Position
032656	NAREEN - DUNDAS	6.51	0	0	6.51	1	N	D
032657	NAREEN - DUNDAS	0.68	1.02	0	1.7	1	N	D
032658	NAREEN - DUNDAS	2.88	0.32	0	3.2	1	Y	D
032659	NAREEN - DUNDAS	1.05	0	0	1.05	1	N	D
032660	NAREEN - DUNDAS	0.75	0	0	0.75	1	N	DL
032660	NAREEN - DUNDAS	2.75	0	0	2.75	1	N	DL
032661	NAREEN - DUNDAS	2.664	0.666	0	3.33	1	S	DL
032662	NAREEN - DUNDAS	9.1	0	0	9.1	1	S	DL
032663	NAREEN - DUNDAS	6.2985	0.3315	0	6.63	1	N	DL
032664	NAREEN - DUNDAS	2.42	0	0	2.42	1	N	DL
032665	NAREEN - DUNDAS	4.104	0.456	0	4.56	1	N	DL
032666	NAREEN - DUNDAS	5.124	3.416	0	8.54	1	Y	DL
032667	NAREEN - DUNDAS	0.504	1.89	0.126	2.52	2	Y	D
032668	NAREEN - DUNDAS	4.96	0	0	4.96	1	N	DL
032669	NAREEN - DUNDAS	1.863	0.207	0	2.07	1	N	DL
032669	NAREEN - DUNDAS	2.736	0.304	0	3.04	1	N	DL
032671	NAREEN - DUNDAS	1.78	0	0	1.78	1	N	DL
032672	NAREEN - DUNDAS	1.435	0.615	0	2.05	1	N	DL
032672	NAREEN - DUNDAS	10.724	4.596	0	15.32	1	N	DL
032673	NAREEN - DUNDAS	2.25	0.25	0	2.5	1	N	DL
032674	NAREEN - DUNDAS	0.744	0.186	0	0.93	1	N	S
032675	NAREEN - DUNDAS	0.8	0.2	0	1	1	N	S
032677	NAREEN - DUNDAS	8.704	2.176	0	10.88	1	N	DL
032678	NAREEN - DUNDAS	3.546	0.394	0	3.94	1	Y	DL
032680	NAREEN - DUNDAS	1.32	0.33	0	1.65	1	N	DL
032681	NAREEN - DUNDAS	3.528	0.882	0	4.41	1	N	BS
032682	NAREEN - DUNDAS	3.176	0.794	0	3.97	1	N	D
032683	NAREEN - DUNDAS	3.03	0	0	3.03	1	S	DL
032683	NAREEN - DUNDAS	11.6	0	0	11.6	1	S	DL
032684	NAREEN - DUNDAS	9.594	1.066	0	10.66	1	N	DL
032685	NAREEN - DUNDAS	5.634	0.626	0	6.26	1	N	DL
032685	NAREEN - DUNDAS	5.94	0.66	0	6.6	1	N	DL

Site Number	Map Name	Class 1	Class 2	Class 3	Total Area (ha)	Severity	Treatment Discharge	Landscape Position
032686	NAREEN - DUNDAS	1.428	0.612	0	2.04	1	S	DL
032687	NAREEN - DUNDAS	3.66	0	0	3.66	1	S	DL
032687	NAREEN - DUNDAS	6.32	0	0	6.32	1	S	DL
032687	NAREEN - DUNDAS	1.29	0	0	1.29	1	S	DL
032688	NAREEN - DUNDAS	1.01	0	0	1.01	1	N	DL
032688	NAREEN - DUNDAS	2.93	0	0	2.93	1	N	DL
032688	NAREEN - DUNDAS	3.35	0	0	3.35	1	N	DL
032688	NAREEN - DUNDAS	5.35	0	0	5.35	1	N	DL
032688	NAREEN - DUNDAS	0.78	0	0	0.78	1	N	DL
032690	NAREEN - DUNDAS	14.63	0.77	0	15.4	1	N	DL
032690	NAREEN - DUNDAS	0.893	0.047	0	0.94	1	S	DL
032690	NAREEN - DUNDAS	5.1395	0.2705	0	5.41	1	S	DL
032691	NAREEN - DUNDAS	7.79	0	0	7.79	1	N	D
032692	NAREEN - DUNDAS	0.6	0	0	0.6	1	Y	DL
032692	NAREEN - DUNDAS	1.47	0	0	1.47	1	Y	DL
032693	NAREEN - DUNDAS	3.8475	0.2025	0	4.05	1	N	DL
032694	NAREEN - DUNDAS	3.96	0.44	0	4.4	1	N	DL
032695	NAREEN - DUNDAS	2.19	0	0	2.19	1	Y	DL
032696	NAREEN - DUNDAS	2.37	0	0	2.37	1	N	D
032699	NAREEN - DUNDAS	27.83	27.83	0	55.66	2	S	DL
032700	NAREEN - DUNDAS	17.66	0	0	17.66	1	N	DL
032701	NAREEN - DUNDAS	4.128	1.032	0	5.16	1	S	DL
032701	NAREEN - DUNDAS	6.248	1.562	0	7.81	1	S	DL
032702	NAREEN - DUNDAS	2.328	0.582	0	2.91	1	S	DL
032702	NAREEN - DUNDAS	19.44	4.86	0	24.3	1	S	DL
032702	NAREEN - DUNDAS	1.152	0.288	0	1.44	1	S	DL
032703	NAREEN - DUNDAS	24.024	6.006	0	30.03	1	S	DL
032704	NAREEN - DUNDAS	4.34	1.86	0	6.2	1	N	DL
032704	NAREEN - DUNDAS	32.207	13.803	0	46.01	1	N	DL
032705	NAREEN - DUNDAS	7.75	0	0	7.75	1	N	DL
032707	NAREEN - DUNDAS	6.97	0	0	6.97	1	N	D
032708	NAREEN - DUNDAS	12.53	0	0	12.53	1	N	DL

Site Number	Map Name	Class 1	Class 2	Class 3	Total Area (ha)	Severity	Treatment Discharge	Landscape Position
032709	NAREEN - DUNDAS	11.31	0	0	11.31	1	N	DL
032710	NAREEN - DUNDAS	29.29	0	0	29.29	1	N	D
032710	NAREEN - DUNDAS	3.37	0	0	3.37	1	N	D
032712	NAREEN - DUNDAS	1.94	0	0	1.94	1	N	D
032713	NAREEN - DUNDAS	1.09	0	0	1.09	1	N	DL
032713	NAREEN - DUNDAS	8.26	0	0	8.26	1	N	DL
032713	NAREEN - DUNDAS	1.87	0	0	1.87	1	N	DL
032713	NAREEN - DUNDAS	3.22	0	0	3.22	1	N	DL
032713	NAREEN - DUNDAS	6.07	0	0	6.07	1	N	DL
032713	NAREEN - DUNDAS	3.69	0	0	3.69	1	N	DL
032715	NAREEN - DUNDAS	9.62	0	0	9.62	1	N	DL
032717	NAREEN - DUNDAS	2.51	0	0	2.51	1	N	DL
032718	NAREEN - DUNDAS	6.07	0	0	6.07	1	N	DL
Grand Total:		2341.418	612.5575	30.082	2984.057			