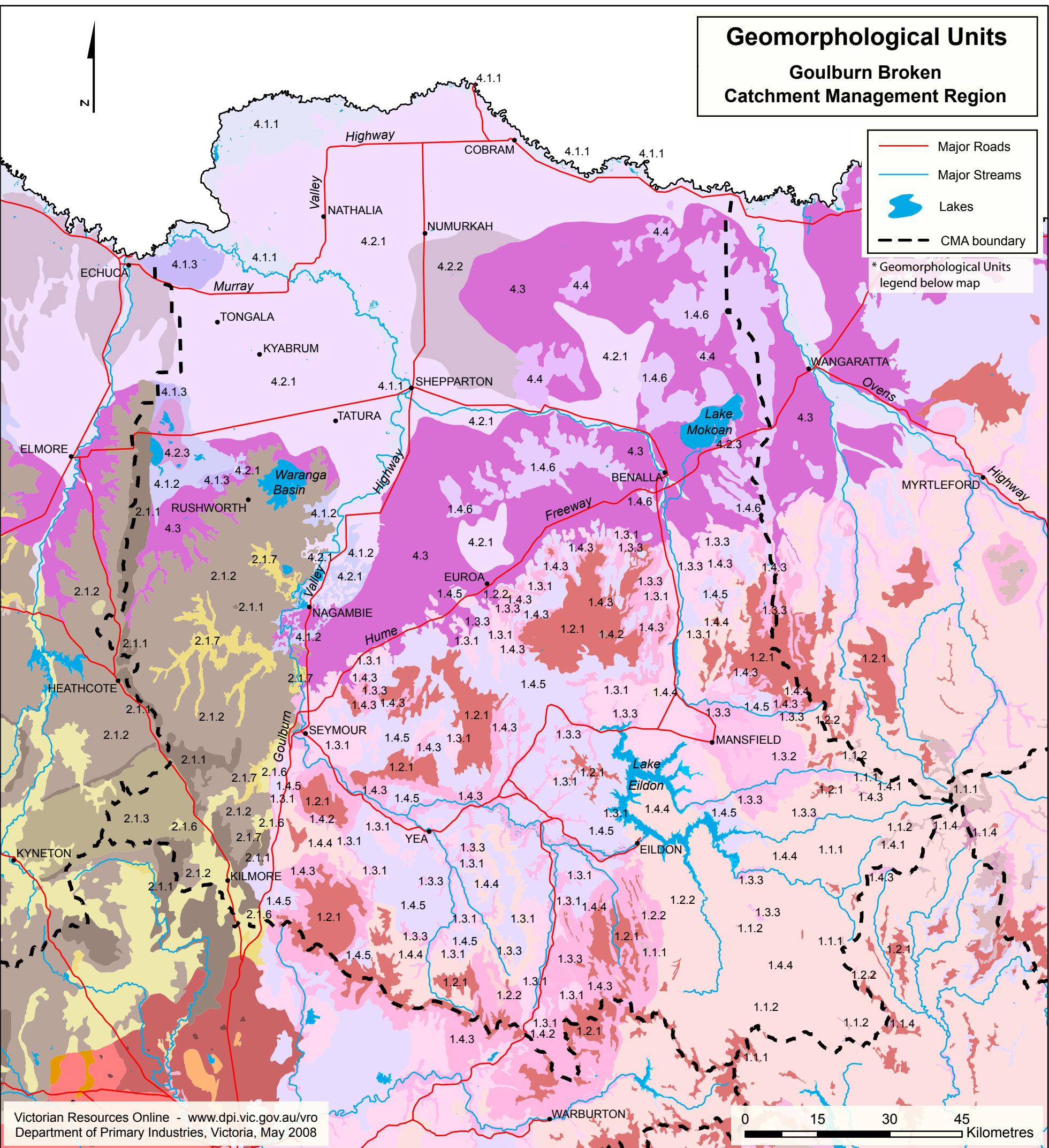


Geomorphological Units

Goulburn Broken Catchment Management Region



Victorian Resources Online - www.dpi.vic.gov.au/vro
 Department of Primary Industries, Victoria, May 2008

0 15 30 45 Kilometres

Geomorphological Units

Eastern Uplands (EU)

- 1.1.1 High elevation summit plateaux
- 1.1.2 High elevation broad ridges, plateaux
- 1.1.4 High elevation capped (basalt) plains
- 1.2.1 Moderate elevation plateaux and broad ridges
- 1.2.2 Moderate elevation enclosed landscapes of low relief
- 1.3.1 Low elevation low relief landscapes
- 1.3.2 Low elevation enclosed landscapes of low relief
- 1.3.3 Low elevation terraces, fans and floodplains
- 1.4.1 Prominent summits above 1200m
- 1.4.2 Prominent summits between 500 and 1200m
- 1.4.3 Escarpments gorges
- 1.4.4 Deeply dissected ridge and valley landscapes
- 1.4.5 Moderately dissected ridge and valley landscapes
- 1.4.6 Outlying ridges and hills

Western Uplands (WU)

- 2.1.1 Ridges, escarpments, mountains on non-granitic Palaeozoic rocks
- 2.1.2 Hills, valley slopes and plains on non-granitic Palaeozoic rocks
- 2.1.3 Ridges, escarpments, mountains on granitic Palaeozoic rocks
- 2.1.6 Eruption points and volcanic plains
- 2.1.7 Dissected uplands: Terraces and floodplains

Northern Riverine Plains (RP)

- 4.1.1 Meander belt below plain level sometimes source-bordering dunes
- 4.1.2 Areas of inundation away from modern channels
- 4.1.3 Lakes and basins with lunettes on modern floodplains
- 4.2.1 Plains with leveed channels sometimes source-bordering dunes
- 4.2.2 Plains without leveed channels
- 4.2.3 Plains with lakes and depressions with lunettes
- 4.3 Alluvial Fans and Aprons
- 4.4 Hills and Low Hills