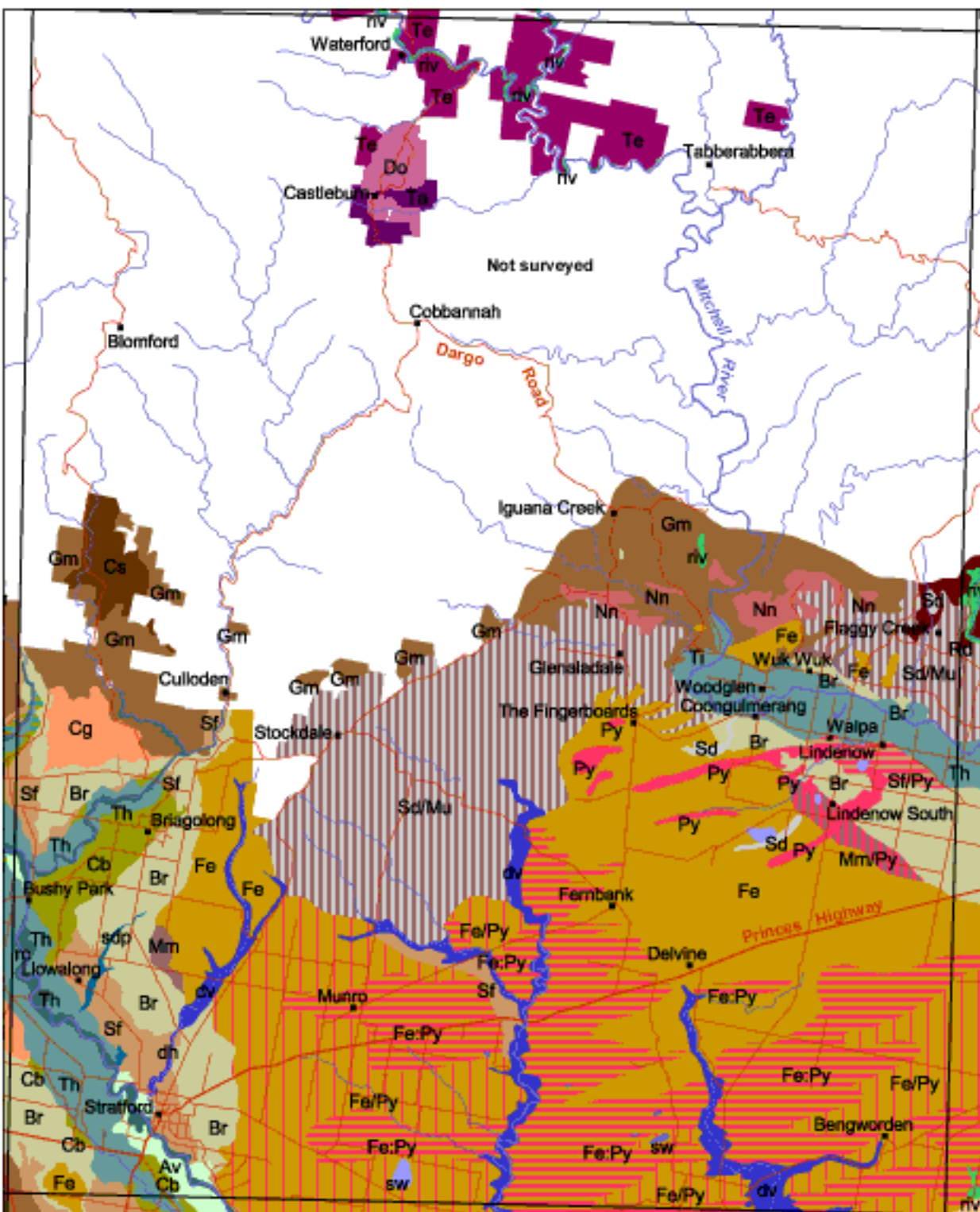


Soils and Landforms of West Gippsland

Stratford 1: 100 000 mapsheet



Based on Sargeant and Imhof (2003)
Department of Primary Industries



Mapunit	Name	Landform	Geology	Dominant Soils
Av	Avon	Flood Plain	Recent alluvial sediments	RUDOSOLS
Br	Briagolong	Level Plain	Pleistocene sediments Qp4	Yellow SODOSOLS
Cb	Clydebank	Stagnant Alluvial Plain	Pleistocene sediments Qp6	Sodic Red DERMOSOLS
Cg	Coongulla	Rolling Low Hills	Tertiary sediments	Yellow and Brown SODOSOLS
Cs	Collins	Rolling to Steep Low Hills	Devonian rhyolite	Brown DERMOSOLS (stony)
Do	Dargo	Rolling Hills	Paleozoic granites and gniesses	Red CHROMOSOLS
Fe	Fernbank	Undulating Plain	Pleistocene sediments Qp2	Yellow and Brown SODOSOLS
Gm	Glenmaggie	Rolling to Steep Low Hills	Carboniferous sediments (red beds)	Shallow, stony soils (CHROMOSOLS, SODOSOLS and DERMOSOLS)
Mm	Moormung	Level Plain	Pleistocene (Qp3) sediments	Yellow and Brown SODOSOLS
Nn	Nindoo	Gently Undulating Rises	Pleistocene (Qp1) sediments	Yellow and Brown SODOSOLS
Py	Perry	Dunefield	Pleistocene to Recent aeolian sediments	PODOSOLS
Rd	Reynard	Rolling to steep hills	Devonian Quartz-Feldspar Porphyry	RUDOSOLS
Rn	Roseneath	Longitudinal Dunes	Pleistocene to Recent aeolian sediments	RUDOSOLS
Sd	Stockdale	Undulating Plain	Tertiary sediments	Variable: Grey and Brown SODOSOLS/KUROSOLS/CHROMOSOLS (sandy surface)
Sf	Stratford	Level Plain	Pleistocene (Qp5)	Yellow and Brown SODOSOLS
Ta	Timbarra	Steep hills	Paleozoic granodiorites and gniesses	TENOSOLS/RUDOSOLS
Te	Talbotville	Mountainous	Paleozoic sediments, often metamorphosed	TENOSOLS/RUDOSOLS
Th	Thomson	Flood Plain	Recent sediments	Black DERMOSOLS
Ti	Tinamba	Stagnant Alluvial Plain	Pleistocene (Qp6) sediments	variable: Red and Brown DERMOSOLS, SODOSOLS and CHROMOSOLS
dv	variable drainage lines	Stream Channel	Pleistocene to Recent sediments	TENOSOLS/RUDOSOLS
rc	recent coarse river sediments	Flood plain	Recent sediments	TENOSOLS
rv	riverine	Narrow Alluvial Plain	Recent sediments	HYDROSOLS
sdp	sandy depression	Stream Channel	Pleistocene to Recent sediments	TENOSOLS and KANDOSOLS (sandy)
sw	swamp	Lacustrine Plain	Recent sediments	HYDROSOLS

Complexes (codominant units)		Complexes (subdominant units)	
Cb:Th	Clydebank and Thomson	Fe/Py	Fernbank with Perry
Fe:Py	Fernbank and Perry	Mm/Py	Moormung with Perry
		Sd/Mm	Stockdale with Moormung
		Sf/Py	Stratford with Perry