

step

## 4

## DO I HAVE ARABLE OR NON-ARABLE LAND?

*Conducted in the home*

You will not identify any land classes in this step.

**You will need:**

Property plan

Overlay

Blue permanent marker

Land classing looks at whether your land and soil is arable or non-arable, or if it is unsuitable for agriculture. Arable land is suitable for cropping on a regular basis whereas non-arable land is not capable of supporting cropping due to land and soil constraints. You have already established if you have areas on your property that are unsuited to agriculture.

This booklet has separate non-arable and arable sections. In order to make it easier to follow, the non-arable section is in green, and the arable section in yellow.

This step provides you with a quick way of working out which part of land classing you will concentrate on: non-arable, arable or both.

If you can work through Step 4 and establish that some or all of your property is suitable for cropping (therefore is arable land), then you do not have to work through the non-arable section for these areas.

If you are unsure whether your land is arable, (you may be using it for grazing but feel there is some potential for cropping), you should work through the non-arable section and see whether you can continue through to the arable section.

Table 2 lists limitations of the land and soil that will prevent cropping, making the land non-arable. The definitions in the table are very broad, as the limitations are usually obvious. You should rely on your existing knowledge of your property to work out whether you do or don't have these limitations. If you are not sure whether these limitations are severe enough to prevent cropping, work through the non-arable section anyway. When you work through the non-arable exercises you will look in more detail at each of these limitations.

Table 2 Limitations that prevent cropping (non-arable land).

| Limitations that prevent cropping (non-arable land) | Definition  |
|---|---|
| Steep slopes  | Too steep for cropping machinery. Some moderate slopes may be too steep for cropping machinery if the length of slope is short. |
| Shallow soils                                       | Where you think the soil is too shallow for cropping.   |
| Rocky   | Any rock outcrop that is limiting to machinery.   |
| Surface stone                                       | When surface stone is limiting to machinery.  |
| Drainage problems                                   | Areas that get very wet and restrict vehicle traffic.   |

#### Step 4: Arable versus Non-Arable

As the definitions in the table are very broad, this step is designed to identify the areas that are obviously non-arable or obviously arable. This will help you determine which section of the booklet to use. Mark the non-arable and arable areas on an overlay.

1. Attach an overlay on your plan. Label this 'Overlay 2'.
2. Work through Table 2 above.
3. If you have one or more of the limitations in Table 2, roughly draw a blue boundary around the area on the overlay. Move onto step 5 for those areas.
4. Move onto step 9 for the areas that do not have any of the limitations in the table.

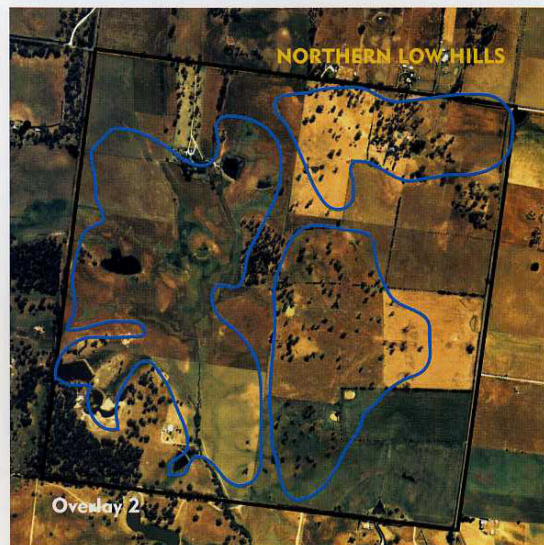


Figure 6 Step 4: Broadly marking out the non-arable land on Overlay 2.