



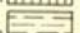


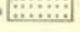
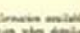


STATE REGIONAL BOUNDARIES COMMITTEE
1944

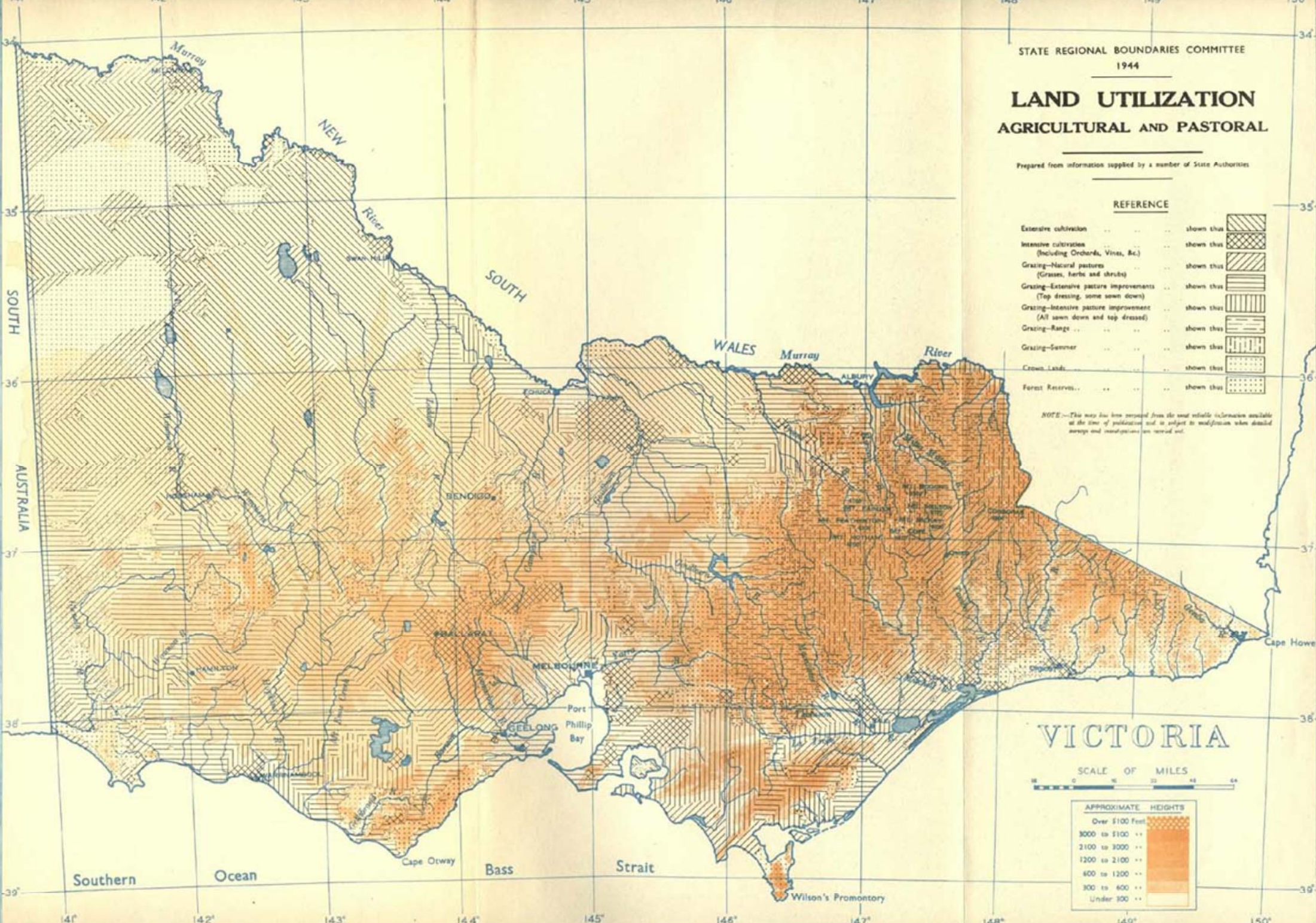
LAND UTILIZATION AGRICULTURAL AND PASTORAL

Prepared from information supplied by a number of State Authorities

REFERENCE

Extensive cultivation	shown thus	
Intensive cultivation (Including Orchards, Vines, &c.)	shown thus	
Grazing—Natural pastures (Grasses, herbs and shrubs)	shown thus	
Grazing—Extensive pasture improvements (Top dressing, some sown down)	shown thus	
Grazing—Intensive pasture improvement (All sown down and top dressed)	shown thus	
Grazing—Range	shown thus	
Grazing—Summer	shown thus	
Crown Lands	shown thus	
Forest Reserves	shown thus	

NOTE—This map has been prepared from the most reliable information available at the time of publication and is subject to modification when detailed surveys and investigations are carried out.



VICTORIA

