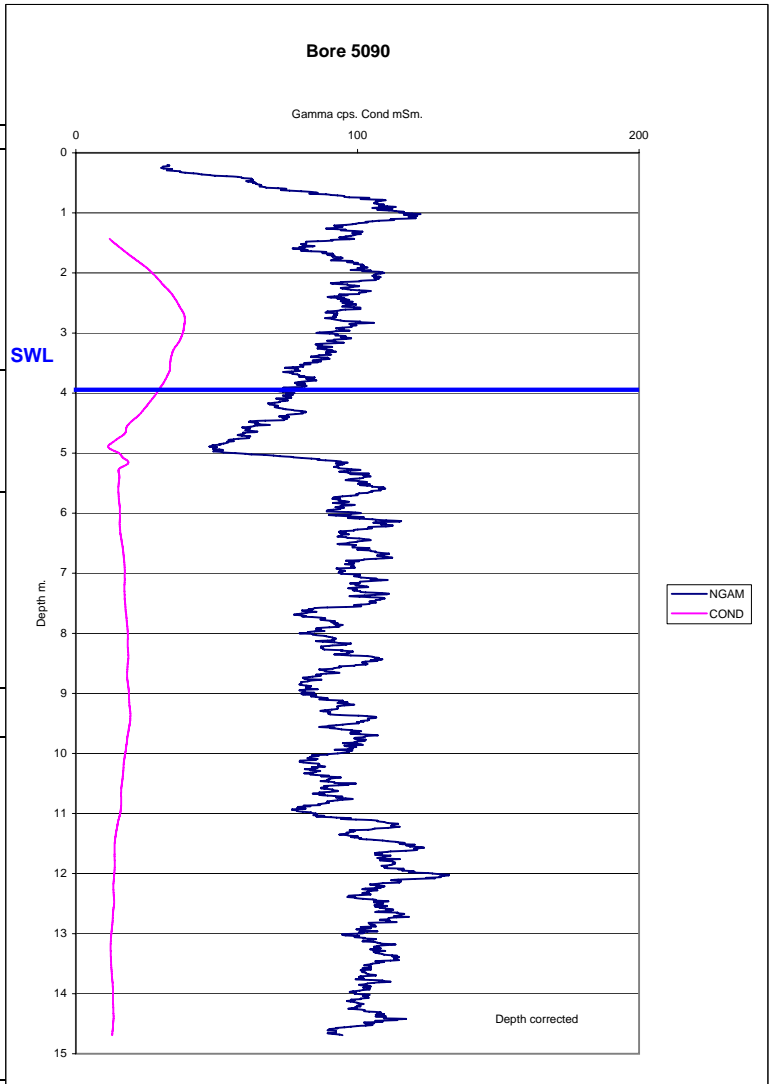


from	to	description
0	4	gravelly clay - red
4	6	silty clay dk - brown
6	9	clay - off white
9	10	silty clay - brill white
10	20	clay - br red



**Geology-** Fluvial clay, silt, sand and gravel

Water EC. 13600 us/cm (12/04)

**GFS-** Local and intermediate flow systems in upland alluvial plains