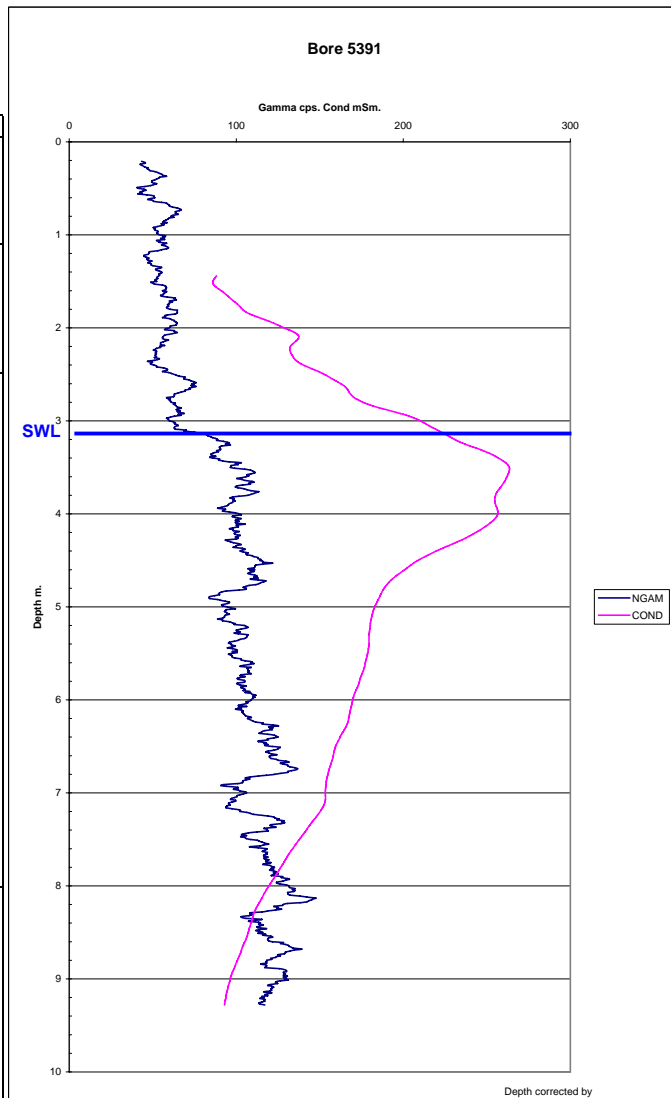


from	to1	description
0	1	silt, brown
1	2.5	silt damp, rocks and gravel
2.5	8	silt grey/brown
8	11.5	mud - smooth wet



Geology - fluvial clay, sand, silt and gravel

Water EC: 10,090 us/cm

GWFS - Local flow systems in weathered fractured sedimentary and metamorphic rocks