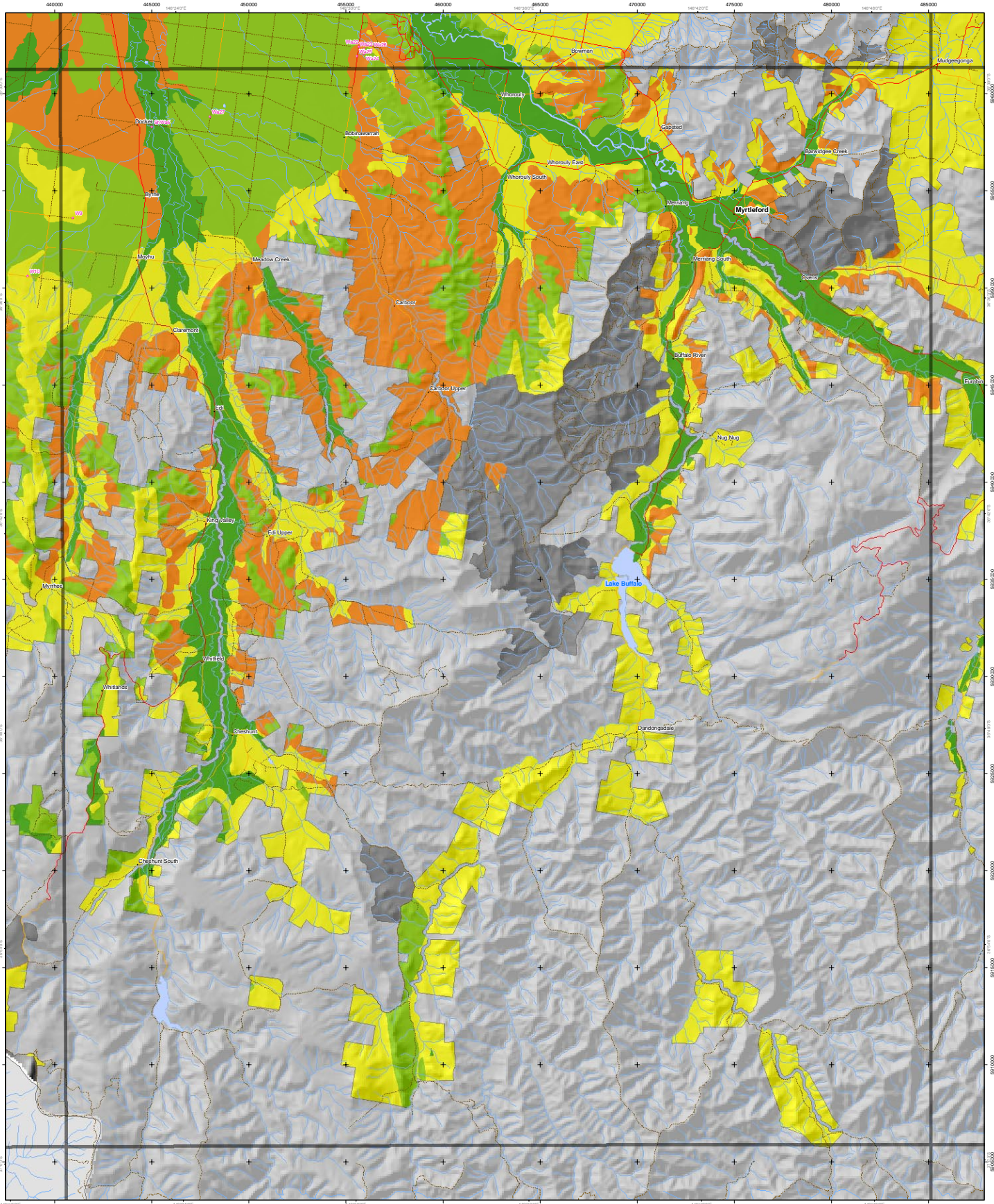


# Wind Erosion Susceptibility of the North East CMA



**Additional Information**  
 Base data sourced from the NRE Corporate Geospatial Data Library (1:100,000 scale, vector and raster).  
 Land Capability classes for agriculture have been derived from a combination of soil conditions and climate attributes. Consideration must also be given to relevant vegetation (highlighted here as an overlay) and flood prone areas before planning decisions are made in regard to land use and land management.  
 This map has been produced as part of the published report 'A Land Resource Assessment of Freshford Land within the North East CMA'. This map may be of assistance to you, but the State of Victoria and its employees do not guarantee that this map is without flaw of any kind or is wholly appropriate for your particular purposes and therefore disclaims all liability for any error, loss or other consequence which may arise from relying on any information in this map.  
 Map produced: June 2002  
 Project file no: 34166, 34167 and 34168  
 © The State of Victoria, Department of Natural Resources & Environment, 2002  
**Centre for Land Protection Research, Bendigo**  
 100 Moorabool St, Bendigo  
 PO Box 3108 Bendigo Delivery Centre 3554  
 Ph: (053) 54 20444  
 Fax: (053) 54 20454  
 e-mail: cldr@dnre.vic.gov.au

- Wind Erosion Susceptibility**
- Low
  - Low-Moderate
  - Moderate
  - Moderate-High
  - High
- Soil sites
  - Freeway
  - Highway
  - Main road
  - Minor road
  - Other road
  - Main river
  - Other river
  - Stream
  - Water bodies
  - Public land
  - Softwood plantations on private land

