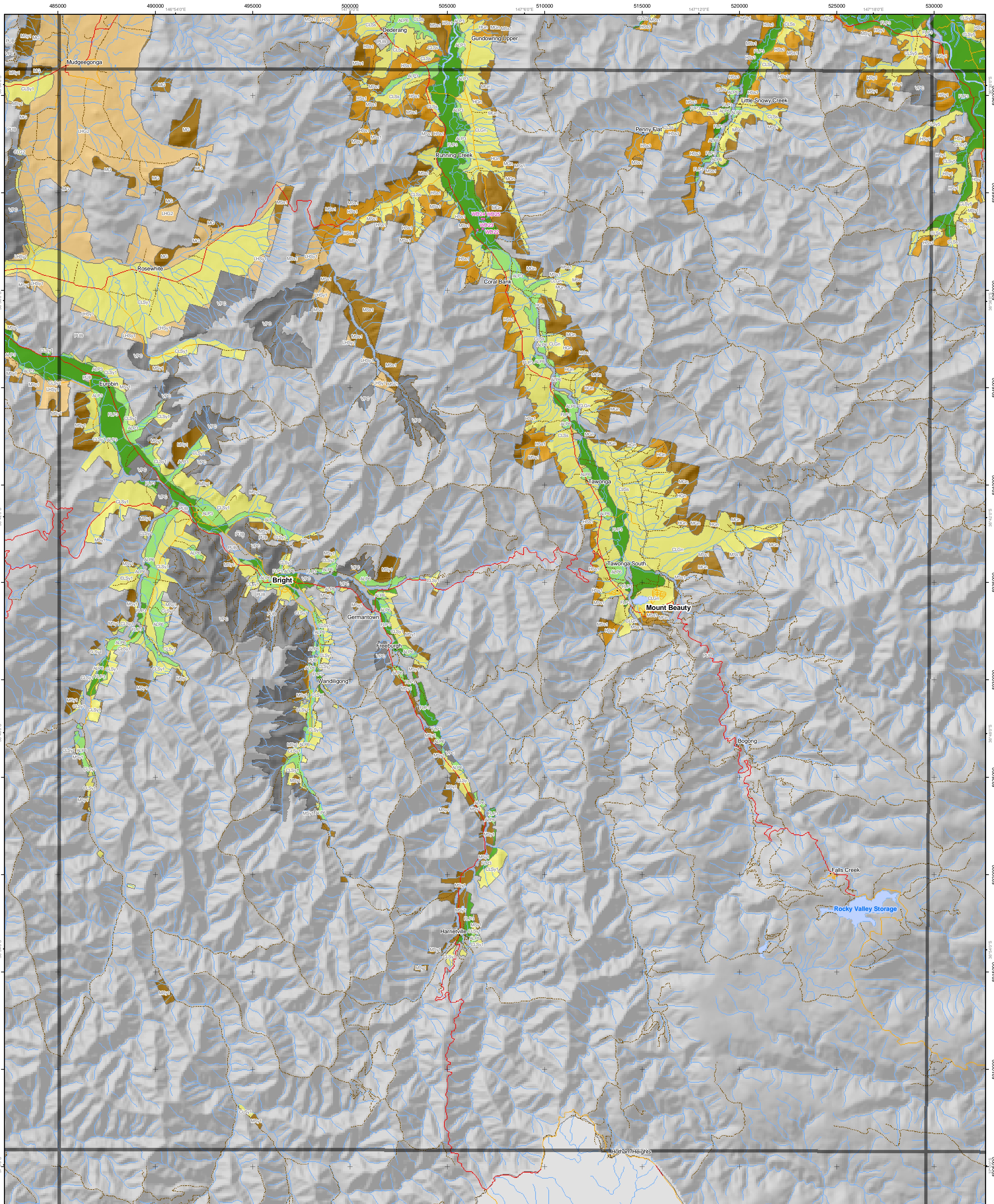


# Soil-Landform Units of the North East CMA



**Additional Information**  
 Base data sourced from the NRE Corporate Geospatial Data Library (1:100 000 roads, rivers and localities).  
 Land Capability classes for agriculture have been derived from a combination of soil, landform and climate attributes. Consideration must also be given to remnant vegetation (highlighted here as an overlay) and flood prone areas before planning decisions are made in regard to land use and land management.  
 This map has been produced as part of the published report 'A Land Resource Assessment of Freehold Land within the North East CMA'. This map may be of assistance to you but the State of Victoria and its employees do not guarantee that the map is without flaw of any kind or is wholly appropriate for your particular purposes and therefore disclaims all liability for any error, loss or other consequence which may arise from you relying on any information in this map.  
 Map produced: June 2002  
 Project file: wlp\_nre\_nla11.mxd  
 © The State of Victoria, Department of Natural Resources & Environment, 2002  
**Centre for Land Protection Research, Bendigo**  
 Cnr Midland Hwy & Taylor St  
 Epsom Victoria 3581  
 (PO Box 3100 Bendigo Delivery Centre 3554)  
 Ph: (03) 54 304444  
 Fax: (03) 54 304304  
 e-mail: cpl@nre.vic.gov.au

Soil sites	Flood Plain Alluvial	Colluvial	Low Hills	Hills	Mountains Hill Plateaux
★ Soil sites	FLP1	ALF1	CLG1	LHG1	HB
Freeway	FLP2	ALF2	CLG2	LHG2	HG1
Highway	FLP3	ALP1	CLGn	LHSy1	HG2
Main road		ALP2	CLs	LHSy2	HG3
Minor road		ALP3	CLSy1	LHSy3	HG4
Other road		ALP4	CLSy2	LHSy4	HGn
Main river		ALP5	CLSy3		HSs1
Other river		ALP6	CLSy4		HSs2
Stream		CLV			HSs3
Water bodies					HSy1
Public land					HSy2
Softwood plantations on private land					HSy3
					MG
					MGn
					MSs1
					MSs2
					MSy1
					MSy2
					MSy3
					MSy4
					MSy5
					MSy6
					MSy7
					MSy8
					MSy9
					MSy10
					PHB
					PHGn
					PHSy
					PMB
					PMSs
					PMSy
					PMV

