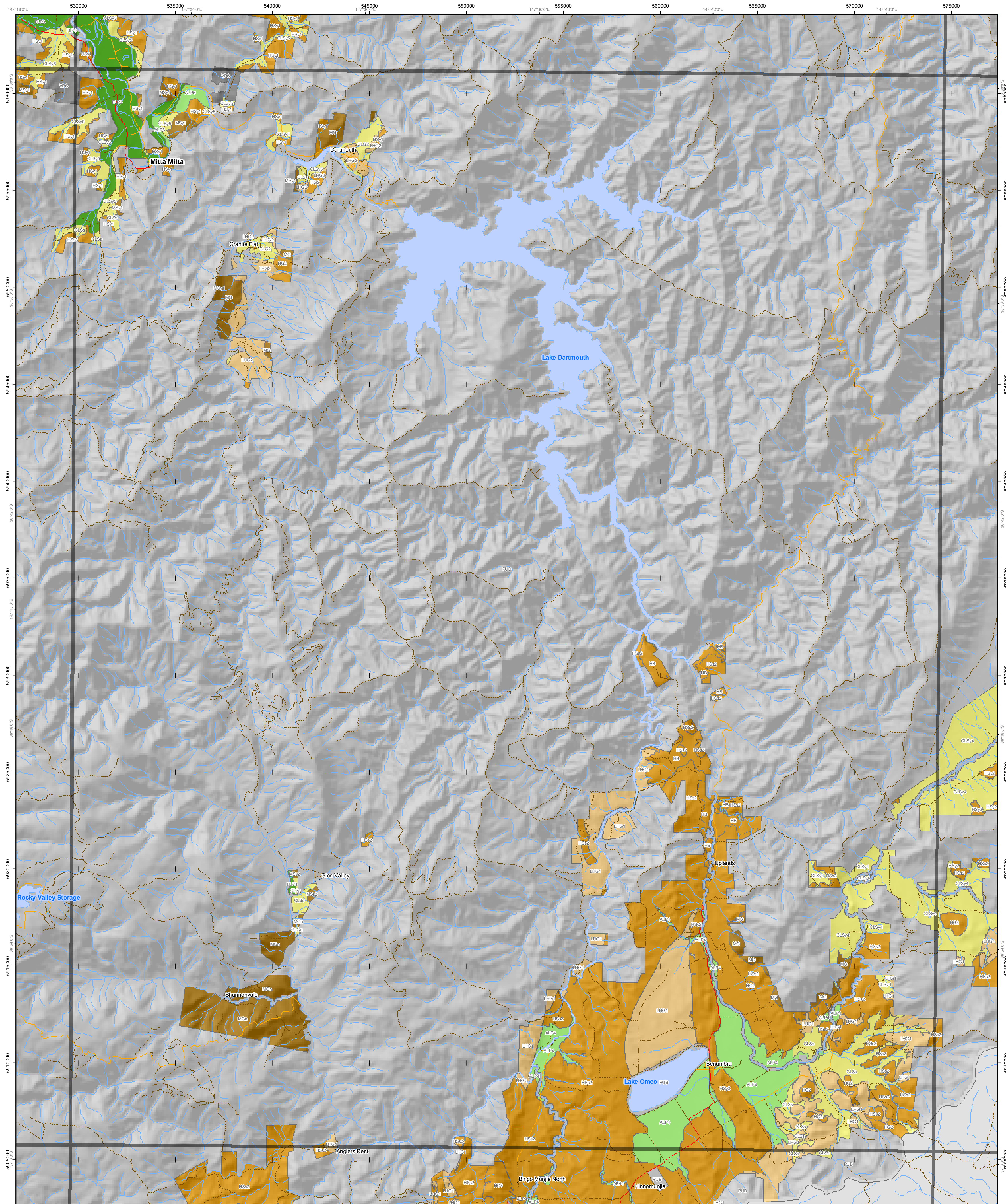


# Soil-Landform Units of the North East CMA



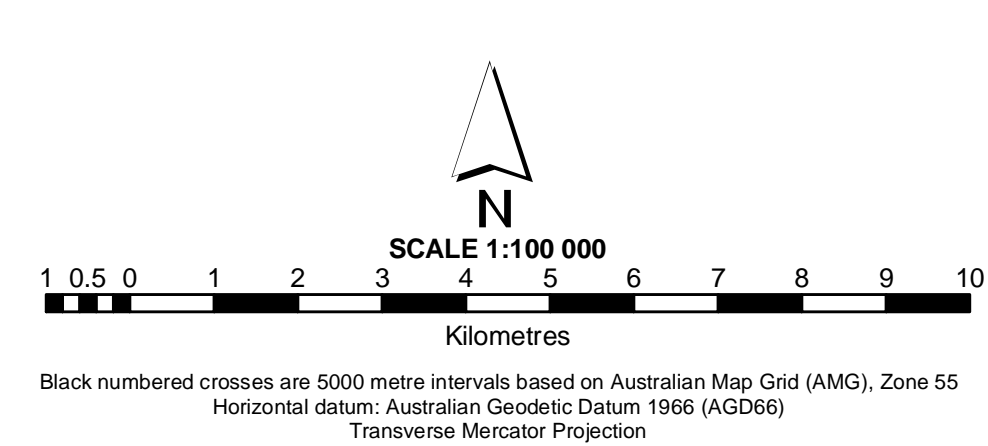
**Additional Information**  
 Base data sourced from the NRE Corporate Geospatial Data Library (1:100 000 roads, rivers and localities).  
 Land Capability classes for agriculture have been derived from a combination of soil, landform and climate attributes. Consideration must also be given to remnant vegetation (highlighted here as an overlay) and flood prone areas before planning decisions are made in regard to land use and land management.  
 This map has been produced as part of the published report 'A Land Resource Assessment of Freehold Land within the North East CMA'. This map may be of assistance to you but the State of Victoria and its employees do not guarantee that the map is without flaw of any kind or is wholly appropriate for your particular purposes and therefore disclaims all liability for any error, loss or other consequence which may arise from you relying on any information in this map.  
 Map produced: June 2002  
 Project file: w:\p\_nre\j11\mxd  
 © The State of Victoria, Department of Natural Resources & Environment, 2002

**Centre for Land Protection Research, Bendigo**  
 Cnr Midland Hwy & Taylor St.  
 Epsom, Victoria 3581  
 (PO Box 3100 Bendigo Delivery Centre 3554)  
 Ph: (03) 54 304444  
 Fax: (03) 54 304304  
 e-mail: cpl@nre.vic.gov.au



- ★ Soil sites
- Freeway
- Highway
- Main road
- Minor road
- Other road
- Main river
- Other river
- Stream
- Water bodies
- Public land
- Softwood plantations on private land

Flood Plain Alluvial	Colluvial	Low Hills	Hills	Mountains Hill Plateaux
FLP1	ALF1	CLG1	LHG1	HB
FLP2	ALF2	CLG2	LHG2	HG1
FLP3	ALP1	CLGn	LHSy1	HG2
ALP2	CLGs	LHSy2	HG3	MSs2
ALP3	CLSy1	LHSy3	HG4	MSy1
ALP4	CLSy2	LHSy4	HGn	MSy2
ALP5	CLSy3		HSs1	MV1
ALP6	CLSy4		HSs2	MV2
CLV			HSs3	
			HSy1	
			HSy2	
			HSy3	
			MG	PHB
			MGn	PHGn
			MSs1	PHSy
			MSs2	
			MSy1	PMB
			MSy2	PMSs
				PMSy
				PMV



Black numbered crosses are 5000 metre intervals based on Australian Map Grid (AMG), Zone 55  
 Horizontal datum: Australian Geocentric Datum 1966 (AGD66)  
 Transverse Mercator Projection

