

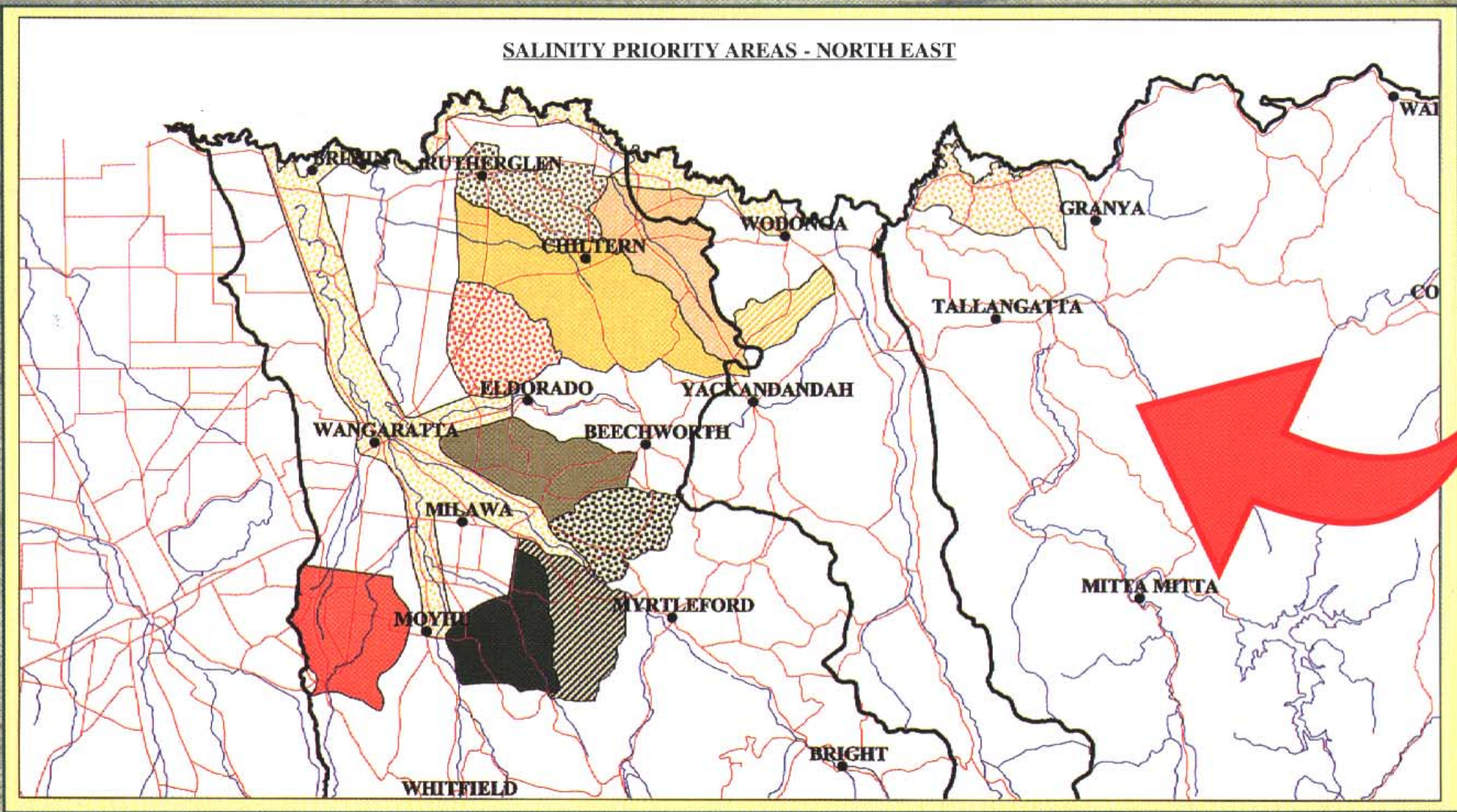
# Priorities for Salinity Management



← To manage salinity the water cycle must be in balance. Landscapes need perennial vegetation to mop up excess water. Perennial options in farmland include lucerne, perennial grass pastures, tree belts and farm forestry.



→ Saline discharge sites can also be managed to increase productivity and reduce environmental impacts.



Funding for recharge and discharge management works is available in salinity priority areas.

*Text by Ian Gamble, Catherine Allan and the North East Salinity Technical Group  
 Photographs by Catherine Allan, Rob Clarke and Peter Ockenden  
 Hydrogeological cross-sections by Mark Reid, Centre for Land Protection Research.*

## For further information contact

Peter Ockenden  
 DNRE WANGARATTA  
 Phone 03 5720 1750

Ian Gamble  
 DNRE WANGARATTA  
 Phone 03 5720 1750

Kylie Roberts  
 DNRE WODONGA  
 Phone 02 6055 6111

Denis Martin  
 Ovens Landcare Network  
 Phone 03 5728 2191

© The State of Victoria, Department of Natural Resources and Environment, 2002.  
 ISBN 0 7311 5030 9

For information on the Department of Natural Resources and Environment (NRE), visit [www.nre.vic.gov.au](http://www.nre.vic.gov.au) or call the NRE Customer Service Centre on 136 186.

**Disclaimer:** This publication may be of assistance to you but the State of Victoria and its employees do not guarantee that the publication is without flaw of any kind or is wholly appropriate for your particular purposes and therefore disclaims all liability for any error, loss or other consequence which may arise from you relying on any information in this publication.



NESSI - North East Salinity Strategy Implementation

