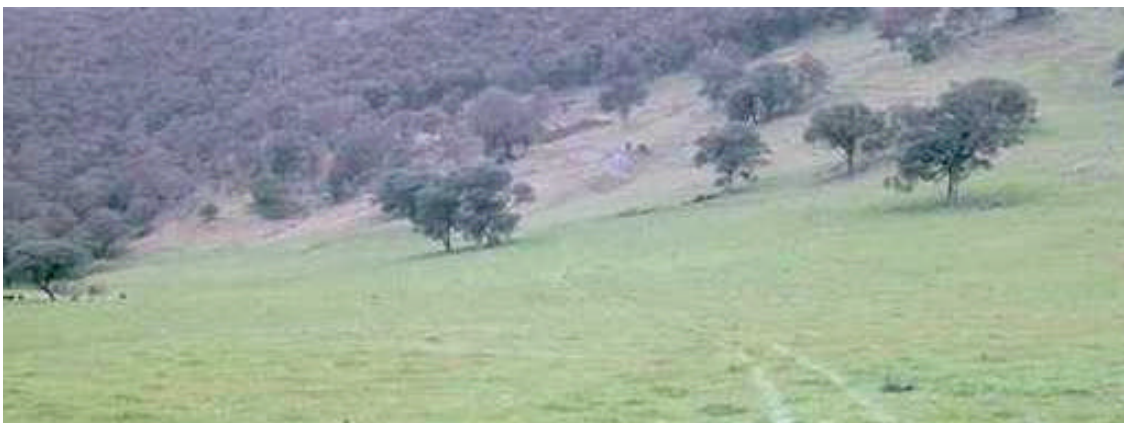


Soil landform map unit: MG; Mountains on Granite, Tallangatta / Pinnacles **Component:** 5

Land element: Gentle to moderate slopes in the lower landscape position



Soils	General description	ASC	PPF
Major	Bleached red texture contrast soils	Melanic Red Kurosol	Dr2.41
Minor	Bleached red gradational soils	Red Dermosol	Gn3.14

Physical characteristics:

Horizon	Depth (cm)	Representative profile description Site ID: Tallangatta 37
A1	0-35	Very dark greyish brown (10YR3/2) sandy clay loam; moderate subangular blocky structure; ped sizes 2-5 mm; rough fabric; firm consistence when dry; common fine to medium sized quartz coarse fragments; pH 6.0; gradual transition to:
A2	35-65	Brown (7.5YR5/2) sandy clay loam when moist; bleached very pale brown (10YR7/4) when dry; massively structured; very firm consistence when dry; common fine to medium sized quartz coarse fragments; slight slaking; pH 5.5; gradual transition to:
B1	65-75	Yellowish red (5YR4/6) sandy clay to light clay; strong angular blocky structure; ped sizes 5-10 mm; smooth fabric; strong consistence when dry; slight slaking; pH 5.0; gradual transition to:
B2	75-110	Dark reddish brown (5YR3/4) light clay; strong angular blocky structure; ped sizes 5-10 mm; smooth fabric; very firm to strong consistence when dry; common medium sized faint yellowish red mottles; high dispersion; pH 5.5; distinct transition to:
BC	110-200+	Red and yellow mottled



Chemical characteristics:

U8Horizon	pH	Salinity (EC)	Internal drainage	Sodicity	Slaking	Dispersion
A1	Moderately acidic	Very low	Well drained	Non sodic	Non slaking	Very low
A2	Moderately acidic	Very low	Moderately well drained	Non sodic	Slaking	Low
B1	Moderately acidic	Very low	Moderately well drained	Non sodic	Slaking	Low
B2	Moderately acidic	Very low	Moderately well drained	Non sodic	Slaking	Low