

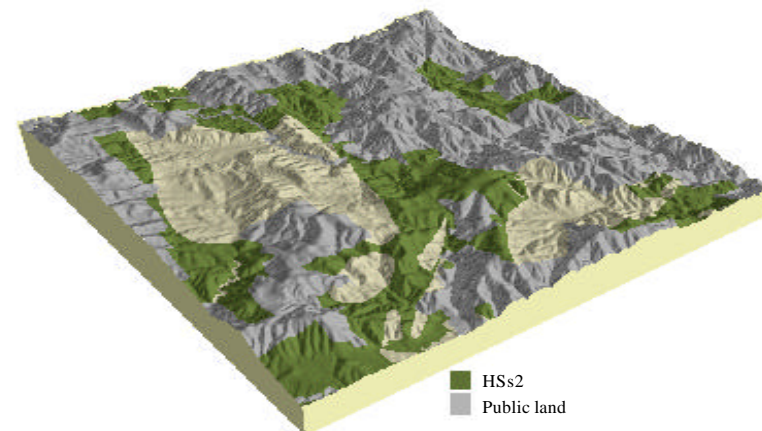
Soil landform unit: HSs2; Hills on schist, type 2, Hinnomunjie

Landform pattern	Hills, low hills
Elevation (m)	600-1450
Annual rainfall (mm)	950-1800
Geomorphic unit	1.3.1 Eastern Uplands; Ridges, Valleys and Hills; High Dissected Ridges and Valley Relief
Geology	Metasediments and associated colluvium

Locality diagram



Position in landscape



Landform component	1	2	3
Landform element	Crests and steeper slopes	Moderate slopes	Gentle slopes in lower landscape position
Slope range (%)	10->32	10-20	3-10
Site drainage	Well drained	Well drained	Moderately well drained
Rock outcrop	Nil	Nil	Nil
Soil description	Stony red and brown/yellow texture contrast soils	Brown/yellow, mottled texture contrast soils	Brown/yellow, mottled texture contrast soils
Present land use	Grazing, conservation	Grazing	Grazing
Susceptibility to erosion	Sheet and rill: Moderate	Sheet and rill: Moderate	Sheet and rill: Moderate
	Gully: Moderate	Gully: Moderate	Gully: High
	Landslip: Moderate	Landslip: Moderate	Landslip: Very low
	Wind: Moderate	Wind: Moderate	Wind: Moderate
Native vegetation	<i>Eucalyptus pauciflora</i> , <i>E. stellulata</i> , <i>E. dalrympleana</i>	<i>E. stellulata</i> , <i>E. dalrympleana</i> , <i>E. nitens</i>	<i>E. rubida</i> , <i>E. pauciflora</i>