






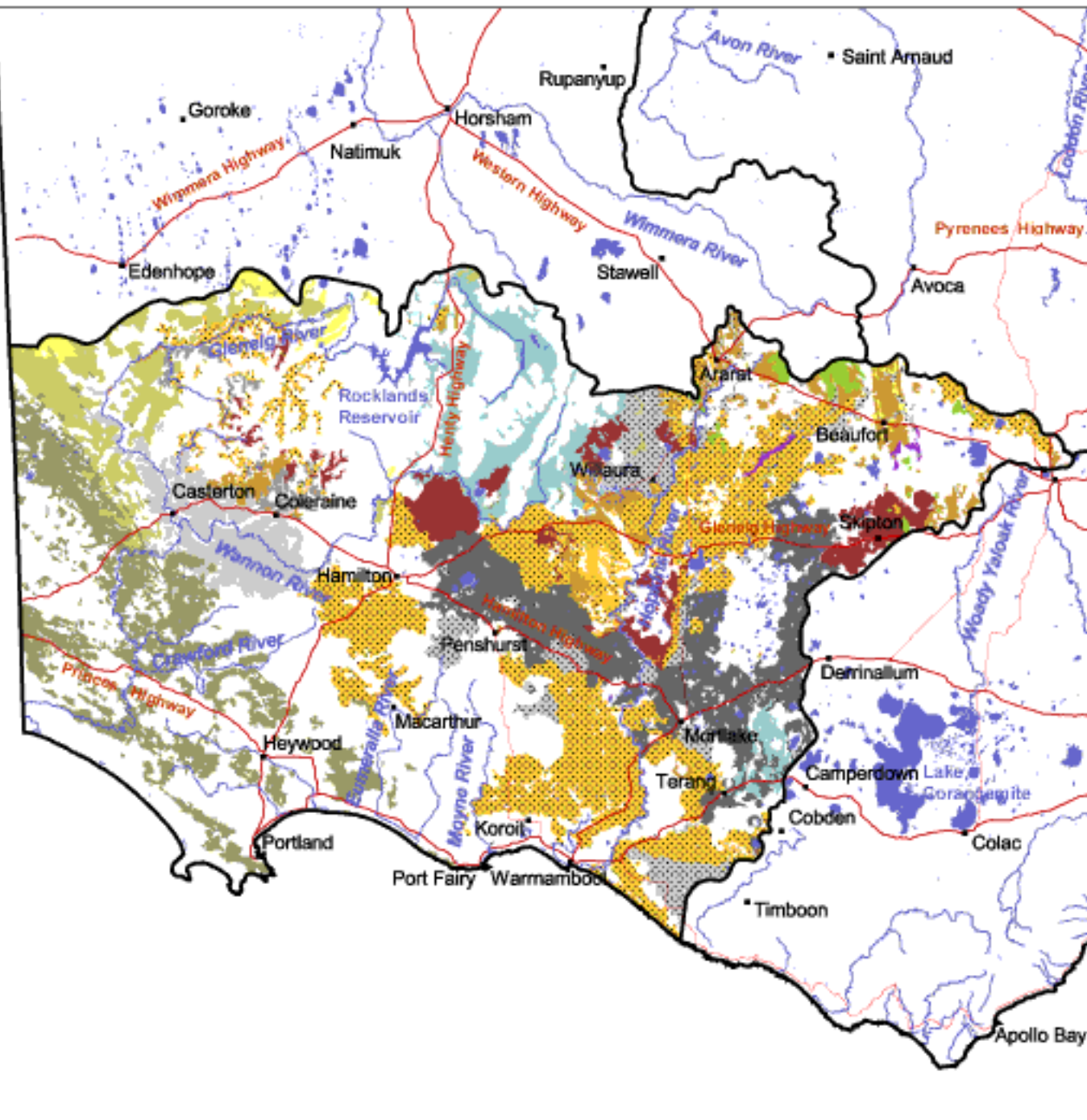
## Sodosols

### Major Occurrences

-  Black Sodosols (mainly on basalts - often Ferric and Vertic)
-  Brown Sodosols (developed on a range of geology)
-  Brown Sodosols (granite)
-  Ferric Brown Sodosols
-  Grey Sodosols (alluvial)
-  Grey Sodosols (basalt)
-  Grey Sodosols (granite)
-  Grey Sodosols (sand plains and rises - with sandy surface soils)
-  Yellow Sodosols (sandy surfaces)

### Minor Occurrences

-  Black Sodosols (associated mainly with Black Vertosols - Dundas tillite)
-  Black Sodosols (associated mainly with Black Vertosols - occurring mainly on broad crests and upper slopes of Merino tableland)
-  Black Sodosols (associated with other soils - mainly on basalts)
-  Brown Sodosols (associated mainly with Chromosols and Kurosoils)
-  Grey Sodosols (associated with other soils - occurring mainly in swales on Foilet dunes and plains)



0 20 40 60 Kilometers