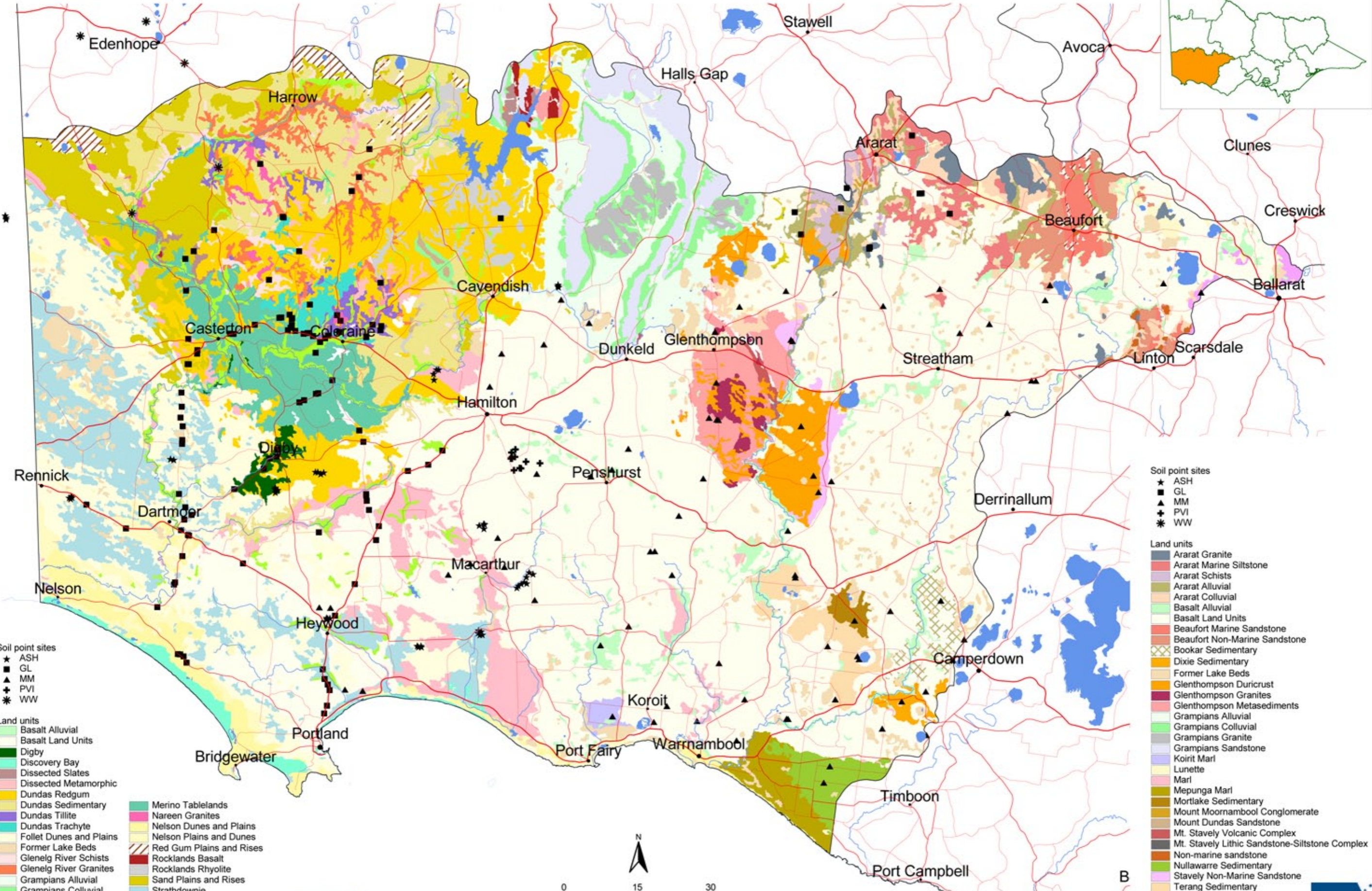


# Land unit / soil site map Glenelg Hopkins Region



- Soil point sites**
- ★ ASH
  - GL
  - ▲ MM
  - ✦ PVI
  - ✱ WW

- Land units**
- Basalt Alluvial
  - Basalt Land Units
  - Digby
  - Discovery Bay
  - Dissected Slates
  - Dissected Metamorphic
  - Dundas Redgum
  - Dundas Sedimentary
  - Dundas Tillite
  - Dundas Trachyte
  - Follet Dunes and Plains
  - Former Lake Beds
  - Glenelg River Schists
  - Glenelg River Granites
  - Grampians Alluvial
  - Grampians Colluvial
  - Grampians Granite
  - Grampians Sandstone
  - Lunette
  - Marl

- Merino Tablelands
- Nareen Granites
- Nelson Dunes and Plains
- Nelson Plains and Dunes
- Red Gum Plains and Rises
- Rocklands Basalt
- Rocklands Rhyolite
- Sand Plains and Rises
- Strathdownie
- Terang Sedimentary
- Wannon Alluvial
- Waterbodies
- unknown

- Soil point sites**
- ★ ASH
  - GL
  - ▲ MM
  - ✦ PVI
  - ✱ WW
- Land units**
- Ararat Granite
  - Ararat Marine Siltstone
  - Ararat Schists
  - Ararat Alluvial
  - Ararat Colluvial
  - Basalt Land Units
  - Basalt Alluvial
  - Beaufort Marine Sandstone
  - Beaufort Non-Marine Sandstone
  - Bookar Sedimentary
  - Dixie Sedimentary
  - Former Lake Beds
  - Glenthompson Duricrust
  - Glenthompson Granites
  - Glenthompson Metasediments
  - Grampians Alluvial
  - Grampians Colluvial
  - Grampians Granite
  - Grampians Sandstone
  - Koroit Marl
  - Lunette
  - Marl
  - Mepunga Marl
  - Mortlake Sedimentary
  - Mount Moornambool Conglomerate
  - Mount Dundas Sandstone
  - Mt. Stavely Volcanic Complex
  - Mt. Stavely Lithic Sandstone-Siltstone Complex
  - Non-marine sandstone
  - Nullawarre Sedimentary
  - Stavely Non-Marine Sandstone
  - Terang Sedimentary
  - Waterbodies
  - White Swan Sedimentary
  - unknown

