

Soil Conservation and Land Utilization Act 1958

UPPER GOULBURN WATER SUPPLY CATCHMENT
(Catchment to Lake Eildon)

Proclaimed 18th December 1956, *Victoria Government Gazette* No. 22 dated 9th January 1957, pursuant to Section 22, sub-section (1) of the *Soil Conservation and Land Utilization Act 1958*.

NOTICE OF DETERMINATION OF LAND USE FOR PART OF UPPER GOULBURN (LAKE EILDON) WATER SUPPLY CATCHMENT

In pursuance of the provisions of Section 23, sub-section (1) of the *Soil Conservation and Land Utilization Act 1958*, the Soil Conservation Authority, after consultation with the Land Conservation Council, has determined the land use for all that land in the Parishes of Banyarmbite, Booroolite, Brankeet, Darlingford, Delatite, Doolam, Eildon, Howqua, Howqua West, Jamieson, Lodge Park, Loyola, Maindample, Maintongoon, Mansfield, Thornton and Wappan within the boundaries of the Upper Goulburn Water Supply Catchment delineated and marked on Plan No. S-478, the original of which is lodged at the Head Office of the Soil Conservation Authority. All land within this areas shall be used in accordance with the particular category of land use to which the area has been assigned. The boundaries of land use categories shown on Plan No. S-478 are intended as a guide to persons and departments involved in the area, who should consult with the Soil Conservation Authority before making any changes in land use.

The provisions of individual land use categories are set out below and should be read in conjunction with the Determination Plan.

Category Number	Land Category	Provisions of Category
1	Land to be used for the protection of streams, water courses and Lake Eildon - within 200 metres of full supply level of Lake Eildon, or a lesser distance where defined; within 40 metres of the banks of streams shown by heavy line on Plan No. S. 478; within 20 metres of other streams and watercourses within the Determined area.	Disturbance of soils and vegetation should be minimal on land in this category. Consultation with the SCA is required before the commencement of clearing or cultivation operations, earthworks associated with construction of buildings or stream crossings, or other earthworks. All sewage and sullage waters shall be treated in accordance with the requirements of the <i>Environment Protection Act 1970</i> , the <i>Health Act 1958</i> and the local municipality.
2	Land to be retained as forest.	Grazing of land in this category should be limited to that required to reduce fire hazard, and where necessary to grazing management or other conservation measures.
3	Steep land of a high erosion hazard best suited for protection forest but which may be used for grazing.	Grazing of land in this category should remain uncleared. The Authority may specify conditions relating to grazing management or other conservation measures.
4	Land suitable for grazing, parts of which may also be cultivated for cropping purposes.	The Authority will, where necessary specify conditions relating to conservation measures or cultivation. Prior consultation with the SCA is required before land is used for commercial horticulture.
5	Land at present subdivided for residential development.	The Authority may advise on the use and management of this land to prevent or correct erosion and to protect water supply interest.

Provisions Applying to Categories 1, 2, and 4

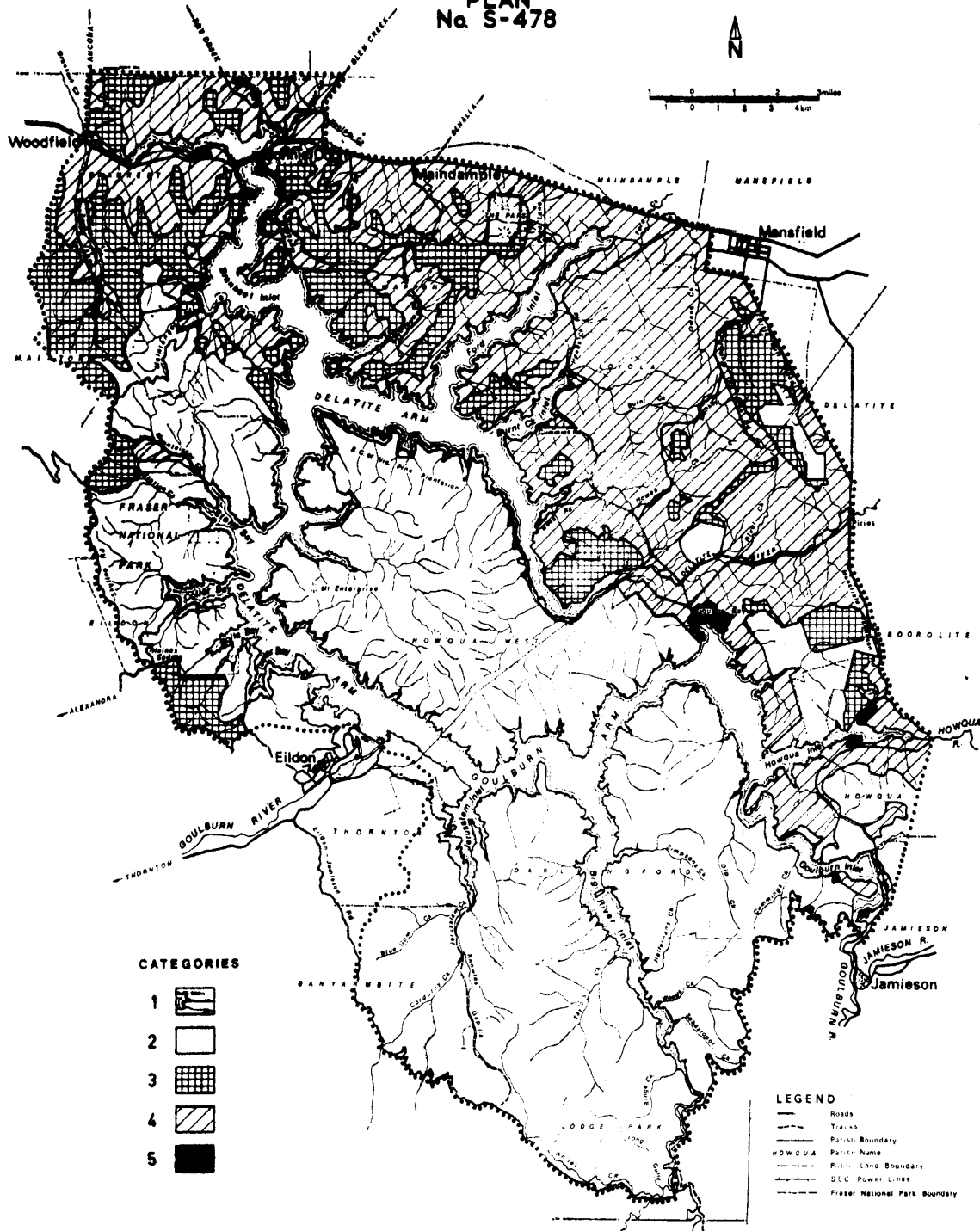
Forest operations are to be carried out in accordance with prescriptions made or approved by the SCA and conditions to that effect will be developed accordingly.

General Provisions Applying to all Categories

Proposals for subdivision of land, gravel removal, extractive industries, mining operations and recreational developments, likely to result in disturbance of soils or vegetation require prior assessments by the Soil Conservation Authority.

Where necessary, conditions will be applied to ensure that any disturbance to soils or vegetation does not cause erosion or otherwise present a risk to water supply interests.

PLAN
No S-478



CATEGORIES

- 1
- 2
- 3
- 4
- 5

LEGEND

- Roads
- Tracks
- Parks Boundary
- HOWQUA Park Name
- Public Land Boundary
- SUC Power Lines
- Fraser National Park Boundary

P. G. FERN, Acting Secretary.