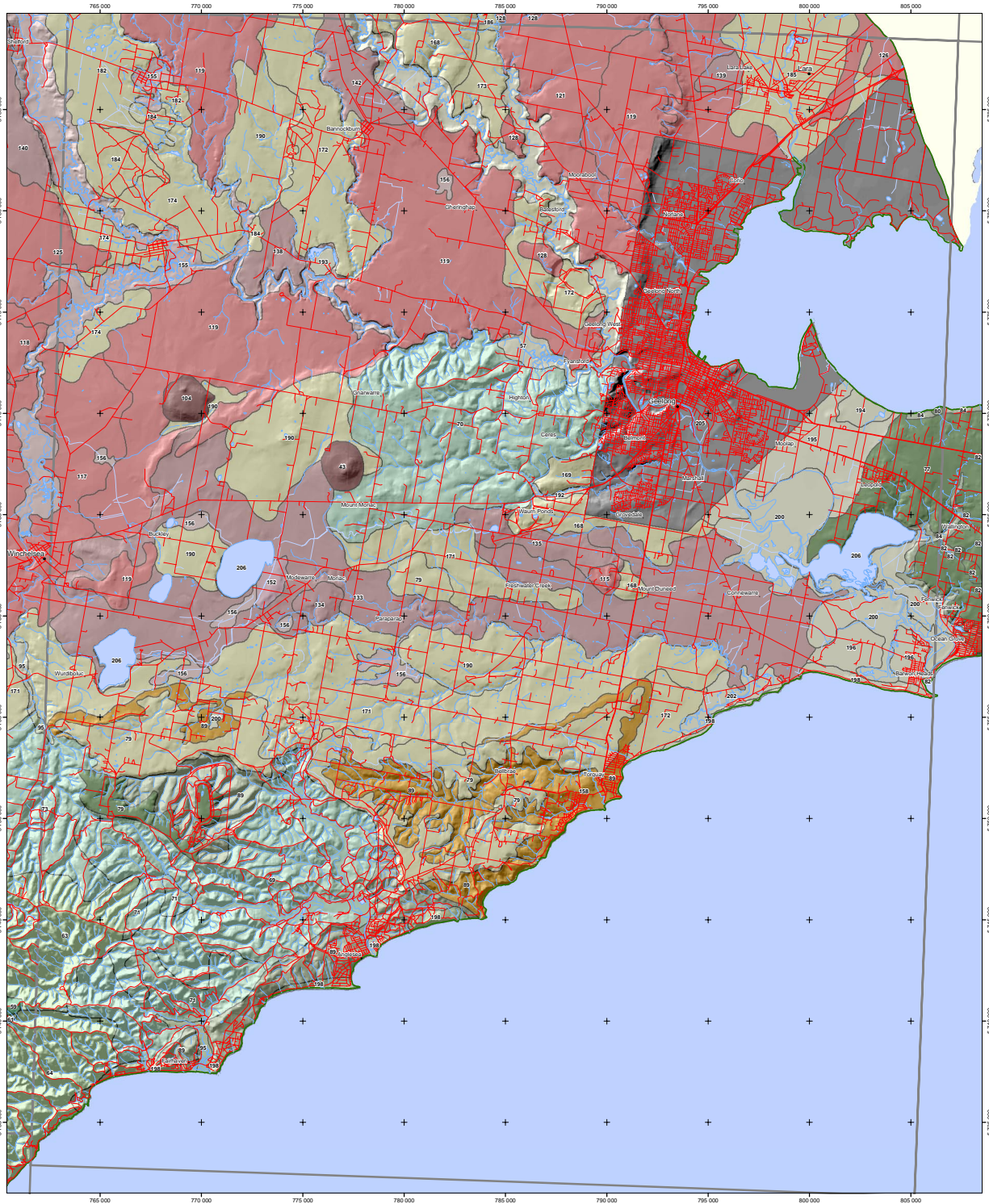


# Corangamite Land Resource Assessment

## Geomorphic and soil landform units

### T7721 - GEELONG



Additional information:  
 State data such as roads, rivers, lakes (1:25,000) towns (1:100,000) are sourced from the NRE Corporate Geospatial Data Library.  
 This map has been produced as part of the Land Resource Assessment of the Corangamite region.  
 This map may be of assistance to you but the State of Victoria and its employees do not guarantee that the map is without flaw of any kind or is wholly appropriate for your particular purposes and therefore disclaims all liability for any error, loss or other consequence which may arise from you relying on any information in this map.  
 Map produced June 2003  
 Copyright: © The State of Victoria, Department of Primary Industries, 2003  
 Department of Primary Industries  
 Centre for Land Protection Research  
 Cnr Midland Hwy & Taylor Street, Epsom 3051  
 BPO 3100 Bendigo Delivery Centre 3084  
 Ph: (03) 5430 4444  
 Fax: (03) 5430 4304  
 e-mail: cpr@dpi.vic.gov.au

- Towns
- Main road
- Minor road
- Other road
- Major stream
- Watercourse
- Channel
- Tile boundary
- Water bodies
- CMA boundaries

**Geomorphic units**

2.1.1	3.1.1	6.1.1	6.2.2
2.1.2	3.1.2	6.1.2	6.2.3
2.1.3	3.2.2	6.1.3	6.2.4
2.1.4	3.3.1	6.1.4	6.2.5
2.1.5	3.3.2	6.1.5	6.3.1
	3.3.3	6.1.6	

N

1:100 000

Kilometres

Australian Map Grid (AMG), Zone 54  
 Horizontal datum: Australian Geodetic Datum 1966 (AGD66)  
 Vertical datum: Australian height datum  
 Universal Transverse Mercator Projection  
 Grid interval 5000 metres

