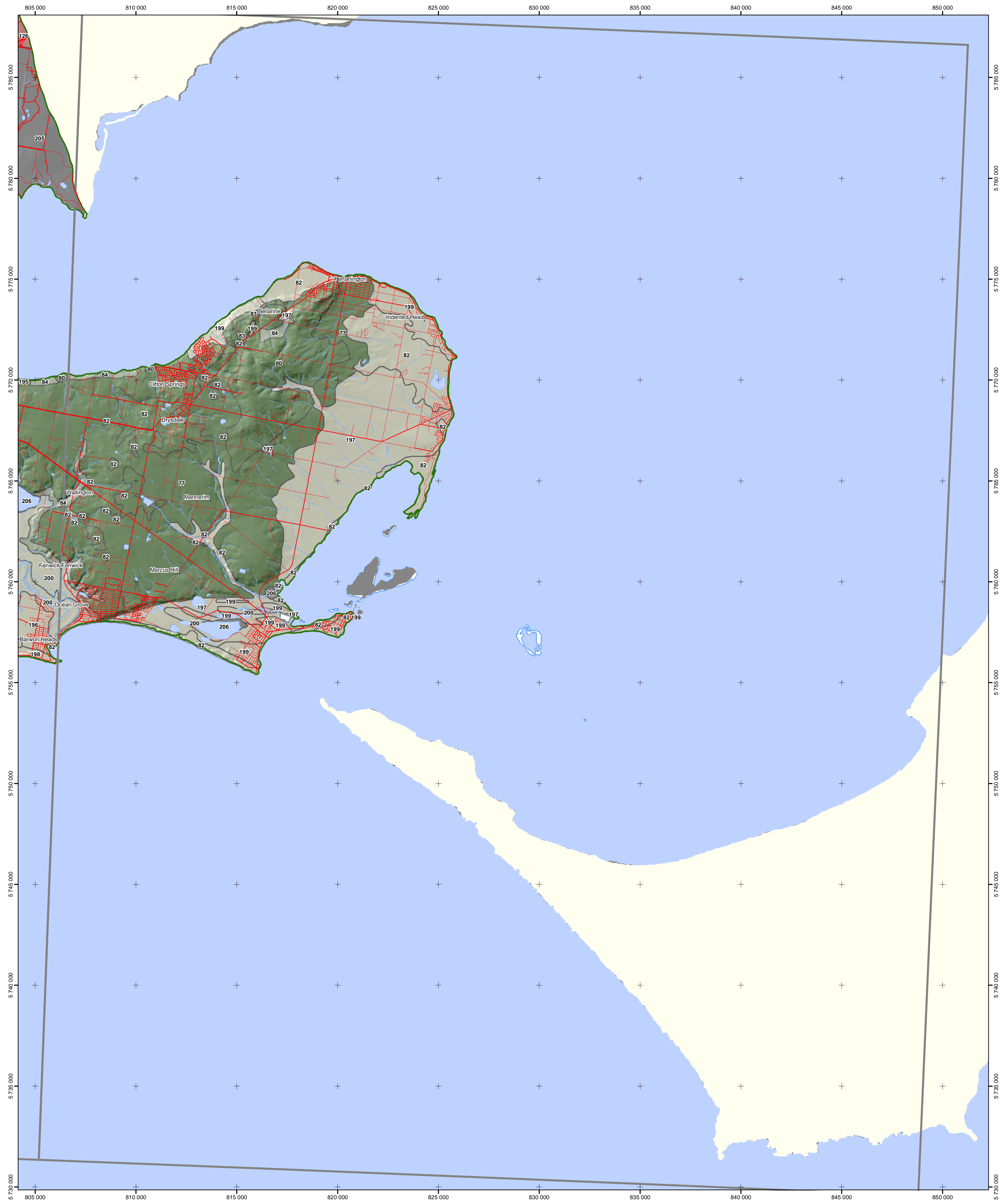


Corangamite Land Resource Assessment

Geomorphic and soil landform units

T7821 - SORRENTO



Additional information:
 Base data such as roads, rivers, lakes (1:25 000) towns (1:100 000) are sourced from the NRE Corporate Geospatial Data Library.
 This map has been produced as part of the Land Resource Assessment of the Corangamite region.

This map may be of assistance to you but the State of Victoria and its employees do not guarantee that the map is without flaw of any kind or is wholly appropriate for your particular purposes and therefore disclaims all liability for any error, loss or other consequence which may arise from you relying on any information in this map.

Map produced June 2003
 Copyright © The State of Victoria, Department of Primary Industries, 2003

Department of Primary Industries
 Centre For Land Protection Research
 Cnr Midland Hwy & Taylor Street, Epsom 3551
 BOX 3100 Bendigo Delivery Centre 3554
 Ph: (03) 5430 4444
 Fax: (03) 5430 4304
 e-mail: ciplr@dpi.vic.gov.au

- Towns
 - Main road
 - Minor road
 - Other road
 - Major stream
 - Watercourse
 - Channel
 - Tile boundary
 - Water bodies
 - CMA boundaries
- | Geomorphic units | | | | | |
|------------------|-------|-------|-------|--|--|
| 2.1.1 | 3.1.1 | 6.1.1 | 6.2.2 | | |
| 2.1.2 | 3.1.2 | 6.1.2 | 6.2.3 | | |
| 2.1.3 | 3.2.2 | 6.1.3 | 6.2.4 | | |
| 2.1.4 | 3.3.1 | 6.1.4 | 6.2.5 | | |
| 2.1.5 | 3.3.2 | 6.1.5 | 6.3.1 | | |
| | 3.3.3 | 6.1.6 | | | |

