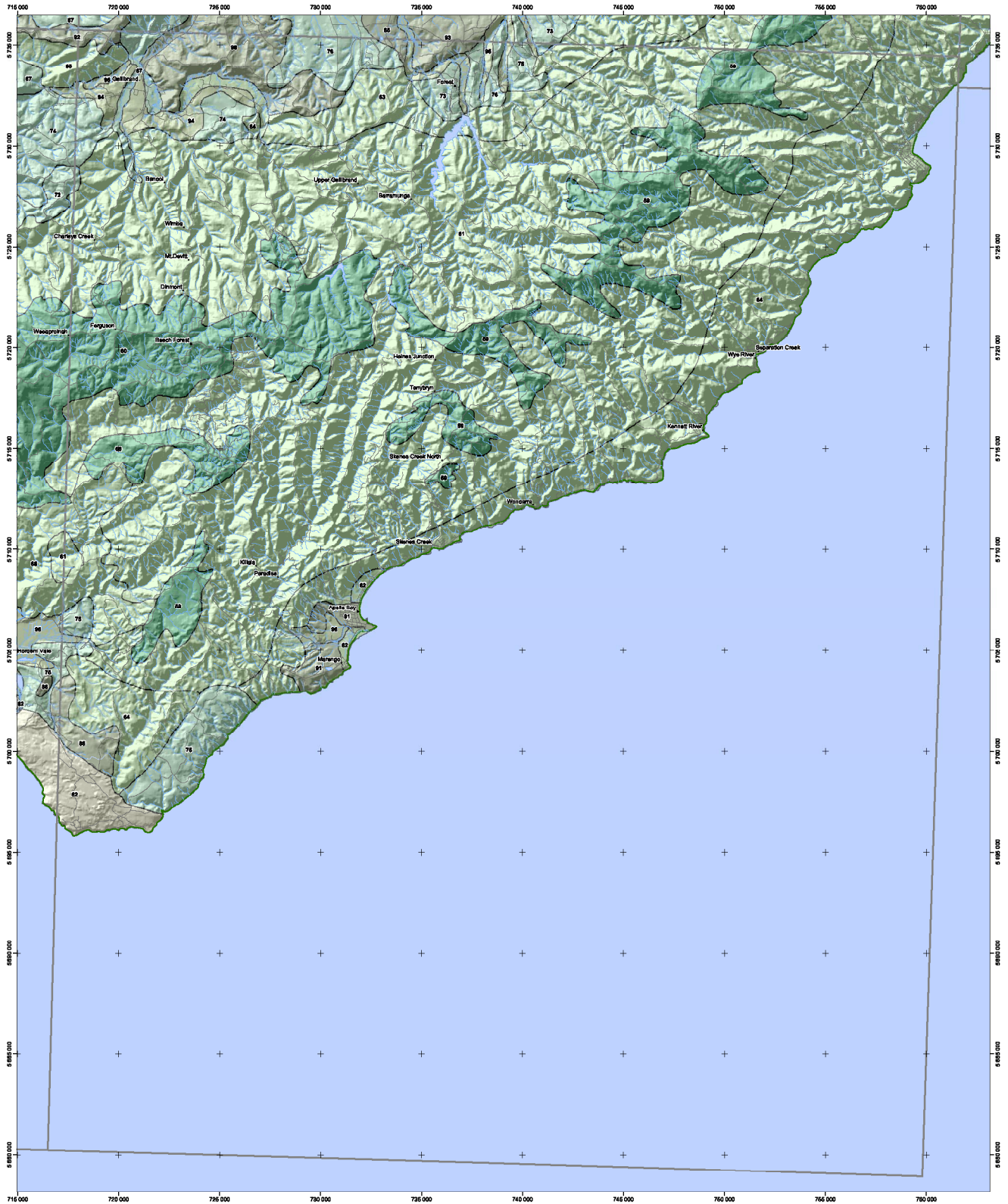


# Corangamite Land Resource Assessment Geomorphic and soil-landform units T7620 - OTWAY



**Additional information:**  
Base data such as roads, rivers, lakes (1:25 000) and towns (1:100 000) are sourced from the NRE Corporate Geospatial Data Library.  
This map has been produced as part of the Land Resource Assessment of the Corangamite region.  
This map may be of assistance to you but the State of Victoria and its employees do not guarantee that the map is without flaw of any kind or is wholly appropriate for your particular purposes and therefore disclaims all liability for any error, loss or other consequences which may arise from you relying on any information in this map.  
Map produced September 2003  
Copyright © The State of Victoria, Department of Primary Industries, 2003  
Department of Primary Industries  
Centre For Land Protection Research  
Cnr Midland Hwy & Taylor Street, Epsom 3561  
BOX 1100 Bendigo Delivery Centre 3564  
Ph: (03) 5430 4444  
Fac: (03) 5430 4304  
e-mail: cpr@dpi.vic.gov.au

- Towns
  - Main road
  - Minor road
  - Other road
  - Major stream
  - Watercourse
  - Channel
  - Tile boundary
  - Water bodies
  - CMA boundaries
- Geomorphic units (labelled by soil unit)**
- |       |       |       |       |
|-------|-------|-------|-------|
| 2.1.1 | 3.1.1 | 8.1.1 | 8.2.2 |
| 2.1.2 | 0.1.2 | 0.1.2 | 0.2.0 |
| 2.1.3 | 3.2.2 | 8.1.3 | 8.2.4 |
| 2.1.4 | 3.3.1 | 8.1.4 | 8.2.5 |
| 2.1.5 | 3.3.2 | 8.1.5 | 8.3.1 |
|       | 3.3.3 |       |       |

