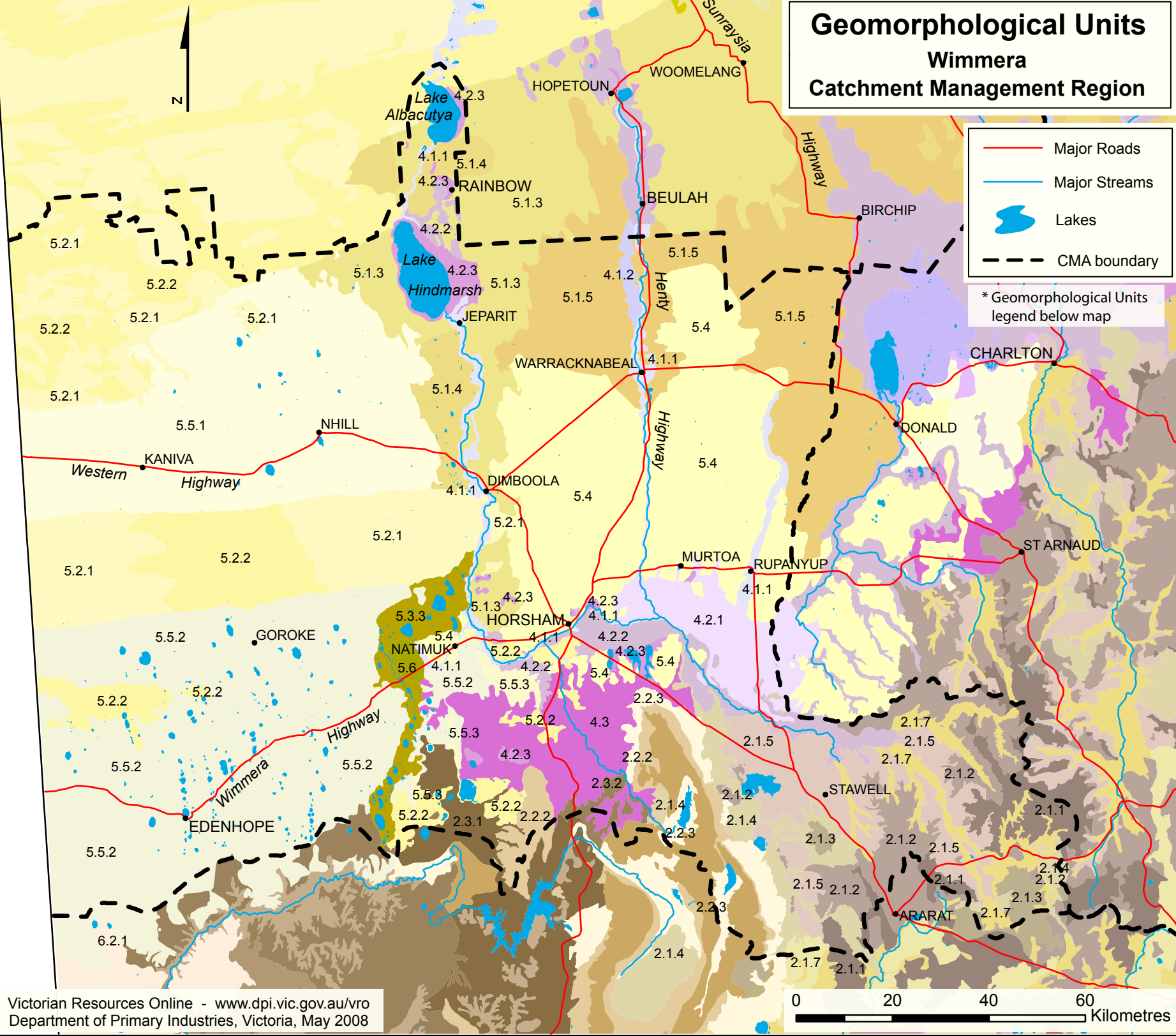


# Geomorphological Units Wimmera Catchment Management Region



Victorian Resources Online - [www.dpi.vic.gov.au/vro](http://www.dpi.vic.gov.au/vro)  
Department of Primary Industries, Victoria, May 2008

## Geomorphological Units

### Western Uplands (WU)

- 2.1.1 Ridges, escarpments, mountains on non-granitic Palaeozoic rocks
- 2.1.2 Hills, valley slopes and plains on non-granitic Palaeozoic rocks
- 2.1.3 Ridges, escarpments mountains on granitic Palaeozoic rocks
- 2.1.4 Hills, valley slopes and plains on granitic Palaeozoic rocks
- 2.1.5 Plateaux and rises of residual Cainozoic landscapes
- 2.1.7 Dissected uplands: Terraces and floodplains
- 2.2.2 Grampians complex: Sandstone hills
- 2.2.3 Grampians complex: Valleys, alluvial terraces and floodplains
- 2.3.1 Tablelands: Low relief, low drainage density
- 2.3.2 Tablelands: High relief, low drainage density

### Northern Riverine Plains (RP)

- 4.1.1 Meander belt below plain level, sometimes source-bordering dunes
- 4.1.2 Areas of inundation away from modern channels
- 4.2.1 Plains with leveed channels, sometimes source-bordering dunes
- 4.2.2 Plains without leveed channels
- 4.2.3 Plains with lakes and depressions with lunettes
- 4.3 Alluvial Fans and Aprons

### North Western Dunefields and Plains (DP)

- 5.1.3 Linear calcareous dunes sub-dominant
- 5.1.4 Hummocky calcareous dunes dominant
- 5.1.5 Hummocky calcareous dunes sub-dominant
- 5.2.1 Parabolic siliceous dunes
- 5.2.2 Linear siliceous dunes
- 5.3.3 Linear depression
- 5.4 Clay Plain with Subdued Ridges
- 5.5.1 Prominent ridge tops with remnant aeolian sands and oriented swales with lakes and lunettes
- 5.5.2 Low ridge tops with remnant aeolian sands and oriented swales with lakes and lunettes
- 5.5.3 Prominent ridges with eroded ferruginized northern spurs
- 5.6 Hills and Low Hills

### Western Plains (WP)

- 6.2.1 Sedimentary derived plains with ridges