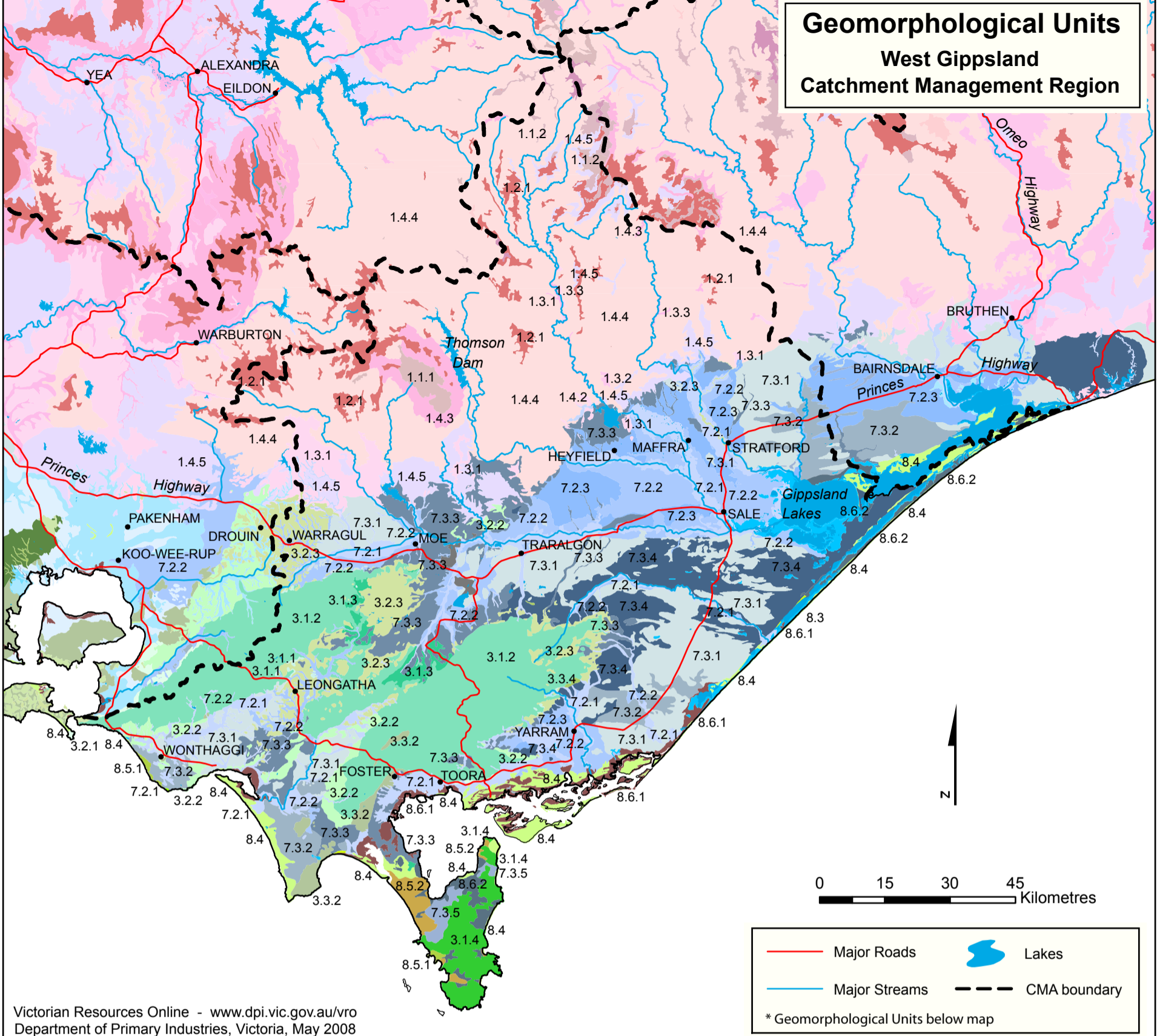


Geomorphological Units West Gippsland Catchment Management Region



Victorian Resources Online - www.dpi.vic.gov.au/vro
Department of Primary Industries, Victoria, May 2008

	Major Roads		Lakes
	Major Streams		CMA boundary

* Geomorphological Units below map

Geomorphological Units

Eastern Uplands (EU)

- 1.1.1 High elevation summit plateaux
- 1.1.2 High elevation broad ridges, plateaux
- 1.2.1 Moderate elevation plateaux and broad ridges
- 1.3.1 Low elevation low relief landscapes
- 1.3.2 Low elevation enclosed landscapes of low relief
- 1.3.3 Low elevation terraces, fans and floodplains
- 1.4.2 Prominent summits between 500 and 1200m
- 1.4.3 Escarpments and gorges
- 1.4.4 Deeply dissected ridge and valley landscapes
- 1.4.5 Moderately dissected ridge and valley landscapes

Southern Uplands (SU)

- 3.1.1 Moderate elevation plateaux and broad ridges
- 3.1.2 Moderate elevation ranges
- 3.1.3 Moderate elevation basalt residuals
- 3.1.4 Moderate elevation prominent hills
- 3.2.1 Low elevation plateaux and broad ridges
- 3.2.2 Low elevation ranges
- 3.2.3 Low elevation basaltic residuals
- 3.3.2 Very low elevation hills and low hills
- 3.3.4 Very low elevation terraces and floodplains

Eastern Plains (EP)

- 7.2.1 Riverine floodplains and morasses
- 7.2.2 Riverine prior stream plains
- 7.2.3 Riverine older alluvial plains
- 7.3.1 Higher level plains without dunes
- 7.3.2 Higher level plains with dunes
- 7.3.3 Higher level dissected plains
- 7.3.4 Higher level dissected plains with dunes
- 7.3.5 Higher level dunefields

Coast (C)

- 8.3 Stranded Cliffs
- 8.4 Coastal Barriers
- 8.5.1 Transgressive dunes: Cliff top; stranded
- 8.5.2 Transgressive dunes: Sea level
- 8.6.1 Low coasts: Tidal
- 8.6.2 Low coasts: Lagoonal