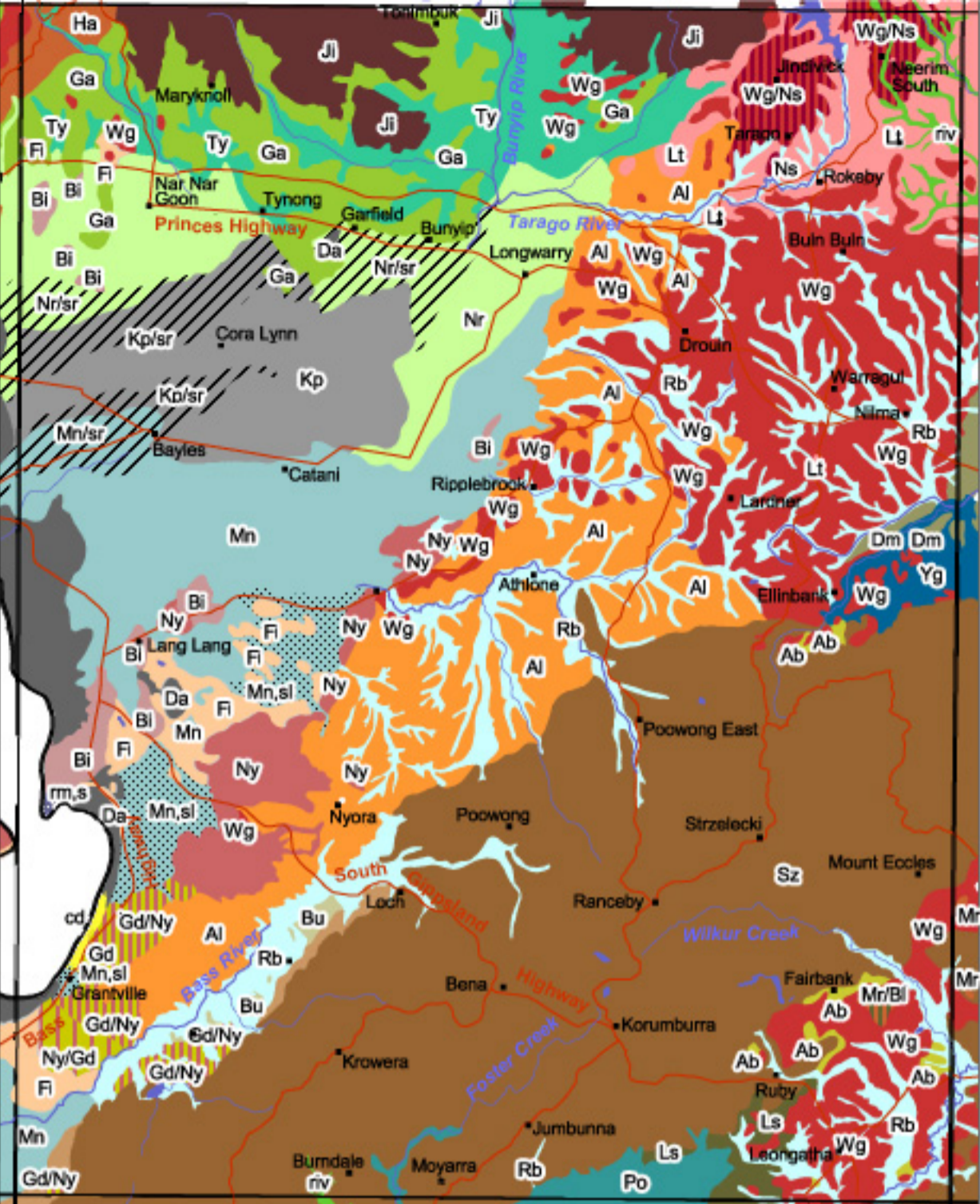


Soils and Landforms of West Gippsland

Warragul 1: 100 000 mapsheet



Based on Sargeant and Imhof (2003)
Department of Primary Industries



Name	Landform	Geology	Dominant Soils
Ab Allambie	Rolling Low Hills	Tertiary (early) sediments, pre basalt	Acidic Yellow and Grey DERMOSOLS
Al Athlone	Rolling Low Hills	Mostly Cretaceous, some Tertiary and Paleozoic sediments	Acidic Yellow DERMOSOLS
Bi Bittern	Gently Undulating Plain	Late Tertiary (Pliocene) sediments	Ferri-Sodic Yellow and Brown CHROMOSOLS
Bu Buffalo	Gently Undulating Plain	Pleistocene (late) sediments	Yellow and Grey DERMOSOLS (possibly KANDOSOLS)
Da Dalmore	Lacustrine Plain	Recent sediments	Aquic and Black VERTOSOLS
Dm Darnum	Weakly Dissected Gently Undulating Plain	Tertiary (Pliocene) sediments	Acidic Dystrophic Yellow and Grey DERMOSOLS
Fi French Island	Dunefield and Sand Plain	Pleistocene to Recent aeolian sediments	Aeric and Aquic PODOSOLS
Ga Garfield	Rolling Low Hills	Devonian granites	Yellow and Grey DERMOSOLS
Gd Gurdies	Rolling Low Hills	Tertiary sediments	Brown to Grey DERMOSOLS
Ha Hallam	Undulating to Rolling Low Hills	Paleozoic sediments	Yellow and Brown DERMOSOLS
Ji Jindivick	Rolling to Steep Hills	Devonian granites	TENOSOLS
Kp Koo Wee Rup	Lacustrine Plain	Recent sediments	Humose-Acidic Grey DERMOSOLS
Lo Loch	Undulating Rises	Cretaceous sediments	Acidic Yellow and Brown DERMOSOLS
Ls Leongatha South	Gently Undulating Rises	Tertiary sediments	Parapanic PODOSOLS with Grey KUROSOLS (sometimes with gravel)
Lt La Trobe	Rolling to Steep Hills	Paleozoic sediments	Brown and Yellow KUROSOLS
Mn Monomeith	Alluvial Plain	Pleistocene (late) sediments	Grey, Yellow and Brown SODOSOLS
Mr Morwell	Rolling Low Hills to Undulating Rises	Tertiary sediments	Acidic Dystrophic Yellow and Grey KANDOSOLS
Nr Narre	Level Plain	Pleistocene (late) to Recent sediments	Magnesian Grey and Yellow KUROSOLS
Ns Neerim South	Rolling Low Hills	Tertiary basalts	Brown FERROSOLS
Ny Nyora	Dunefield	Pleistocene to Recent aeolian sediments	Aeric PODOSOLS
Po Powlett	Flood Plain	Recent sediments	Humose-Acidic HYDROSOLS
Rb Ripplebrook	Narrow Alluvial Plain	Recent sediments	Redoxic HYDROSOLS
Sz Strzelecki	Rolling to Steep Hills	Cretaceous sediments	Acidic Grey, Yellow and Brown DERMOSOLS (some TENOSOLS)
Ty Tynong	Alluvial Plain	Pleistocene to Recent alluvial sediments	Acidic Yellow DERMOSOLS and Grey SODOSOLS
Wg Warragul	Rolling Low Hills to Undulating Rises	Tertiary Basalts	Acidic Red FERROSOLS
Yg Yarragon	Stagnant Alluvial Plain	Pleistocene (late) sediments	Unclassified (clay loams over light/medium clays)
cd coastal dune	Dunefield	Recent sediments	Sandy CALCAROSOLS (often shelly)
riv riverine	Narrow Alluvial Plain	Recent sediments	Extratidal HYDROSOLS

Complexes (subdominant units)		Other units	
Gd/Ny	Gurdies with Nyora	Kp/sr	Koo Wee Rup with sandy rises
Mr/Bi	Morwell with Boolarra	Mn/sr	Monomeith with sandy rises
Ny/Gd	Nyora with Gurdies	Nr/sr	Narre with sandy rises
Wg/Ns	Warragul with Neerim South	Mn/sl	Monomeith, sandy loam surface
		rm,s	recent marine, sand surface