



Victorian Land Use Information System

Background

The ability of the current range of information sources and tools to support policy development and program monitoring is dependent on access to up-to-date, comprehensive land use and land management information. However, one of the major problems with these tools and frameworks is a lack of access to current sources of land use and land management information that are both reliable and repeatable.

Objectives

The objectives of this project are:

- * development of a dynamic information system that can describe what, where and when, land tenure, land use and land cover is present on a regular basis
- * development of a system that allows access to a range of users and stakeholders including modelling, reporting, monitoring, planning and policy groups
- * integration of this system within DPI and DSE spatial data investment plans.

Project outline

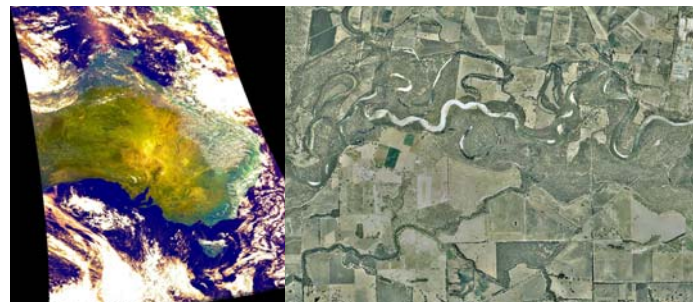
There are five focus areas for the project:

- * system design
- * data awareness
- * data model
- * common definitions and standards
- * data maintenance and continuity

Results

The project aims to produce a dataset that:

- * describes what land tenure, land use and land cover is present, and where and when it is occurring
- * can support trend analysis
- * can support change detection
- * supports many spatial scales
- * is available to a range of stakeholders in various formats
- * is state-wide
- * has the potential to integrate with other datasets
- * can and will be maintained into the future.



Benefits

The Victorian Land Use Information System dataset is not about supporting compliance – it is a strategic product. The dataset will collect and maintain only the basic “what, where and when” of land information and provide this in an accurate and consistent manner. Therefore, the dataset is not limited to any particular use case and instead supports many uses by answering key questions often only a few steps removed from the question being asked.

Four examples of how the data could be used are illustrated below.

Potential uses of land use information

The potential uses of reliable and repeatable land use, land cover and land tenure dataset are endless. Through the provision of a package of data relating to any size area of interest (from mesh block to state-wide) the land use dataset will answer basic questions about the number, distribution or composition of land uses, land covers and tenures, which can then lead to more strategic questions and objectives.

Victorian Land Use Information System

will provide a package of data that will answer a range of spatial questions...

What is the **land use, land cover and land tenure** and **where**?

Using multiple dates - are these changing in composition and space over time?
Is this change significant?
Why is this change occurring?

Where are the critical biodiversity assets?

What is the surrounding **land use/cover**?

Is the **land use/cover** changing?

What are the greatest risks to the preservation of these critical assets?

Where are all the **dry land cropping farms**?

How much area is under cereals?

How much area was under fallow in 2001?
What is the erosion risk?

What **land cover** exists in rural residential areas and surrounds?

Is this a fire risk?

...in any area of interest (Shire, CMA, mesh block)

Contact

For further information about this project, telephone Dr Elizabeth Morse-McNabb on 03 5833 5306, or email elizabeth.morse-mcnabb@dpi.vic.gov.au



Published by: Department of Primary Industries, Victoria, Australia, May 2008

© The State of Victoria, 2008

This publication is copyright. No part may be reproduced by any process except in accordance with the provisions of the *Copyright Act 1968*.

Authorised by: Victorian Government, 1 Spring Street, Melbourne, Victoria 3000 Australia

ISBN 978-1-74199-930-3

Disclaimer

This publication may be of assistance to you but the State of Victoria and its employees do not guarantee that the publication is without flaw of any kind or is wholly appropriate for your particular purposes and therefore disclaims all liability for any error, loss or other consequence which may arise from you relying on any information in this publication.

Images: Front: MODIS Aqua satellite image of Victoria, 14 Nov 2003, Source: NASA Visible Earth Image Gallery; National Oceanic & Atmospheric Administration satellite image of Australia, Feb 2003, Source: ACRES Online Catalogue; Aerial Photography of Moira Shire, 2004, Source: DPI. This page: Landsat 5 Thematic Mapper, Path 92 Scenes 85 & 86, 16 Dec 2000, Source: DPI