

# AREAS UNDER WHEAT

Prepared from information supplied by a number of State Authorities

## REFERENCE

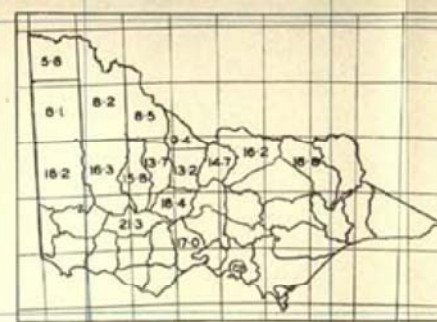
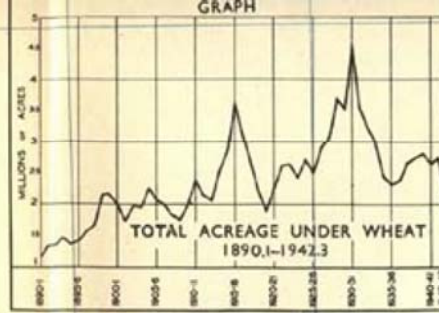
Relative intensity of areas under Wheat

First ..	shown thus	
Second ..	shown thus	
Third ..	shown thus	

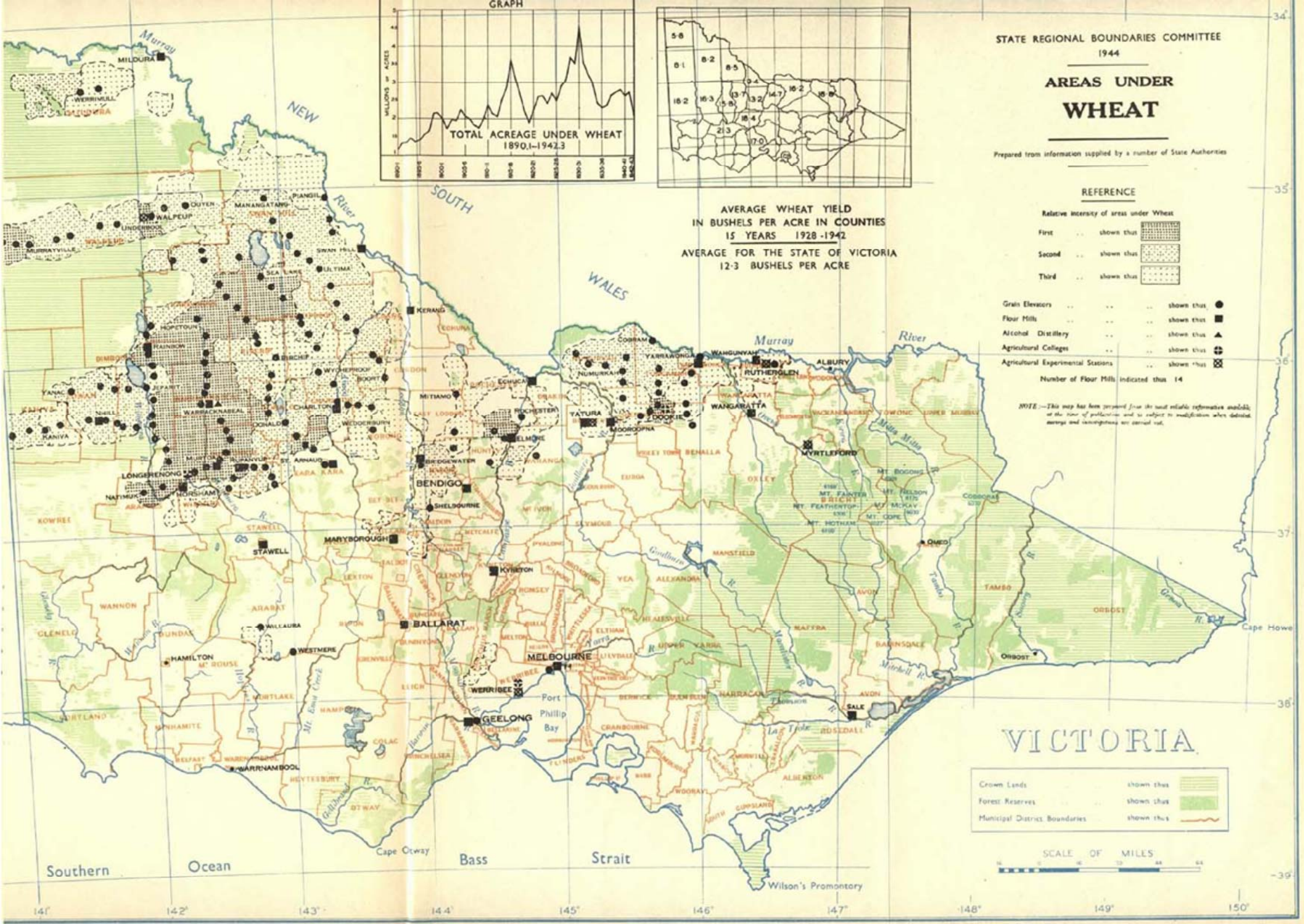
Grain Elevators ..	..	..	shown thus	
Flour Mills ..	..	..	shown thus	
Alcohol Distillery ..	..	..	shown thus	
Agricultural Colleges ..	..	..	shown thus	
Agricultural Experimental Stations ..	..	..	shown thus	

Number of Flour Mills indicated thus 14

*NOTE*—This map has been prepared from the most reliable information available at the time of publication and is subject to modification where detailed surveys and investigations are carried out.



AVERAGE WHEAT YIELD  
IN BUSHELS PER ACRE IN COUNTIES  
15 YEARS 1928-1942  
AVERAGE FOR THE STATE OF VICTORIA  
12.3 BUSHELS PER ACRE



**VICTORIA**

Crown Lands ..	shown thus	
Forest Reserves ..	shown thus	
Municipal District Boundaries ..	shown thus	

