





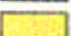



Statewide Crop Suitability - Map 4.2

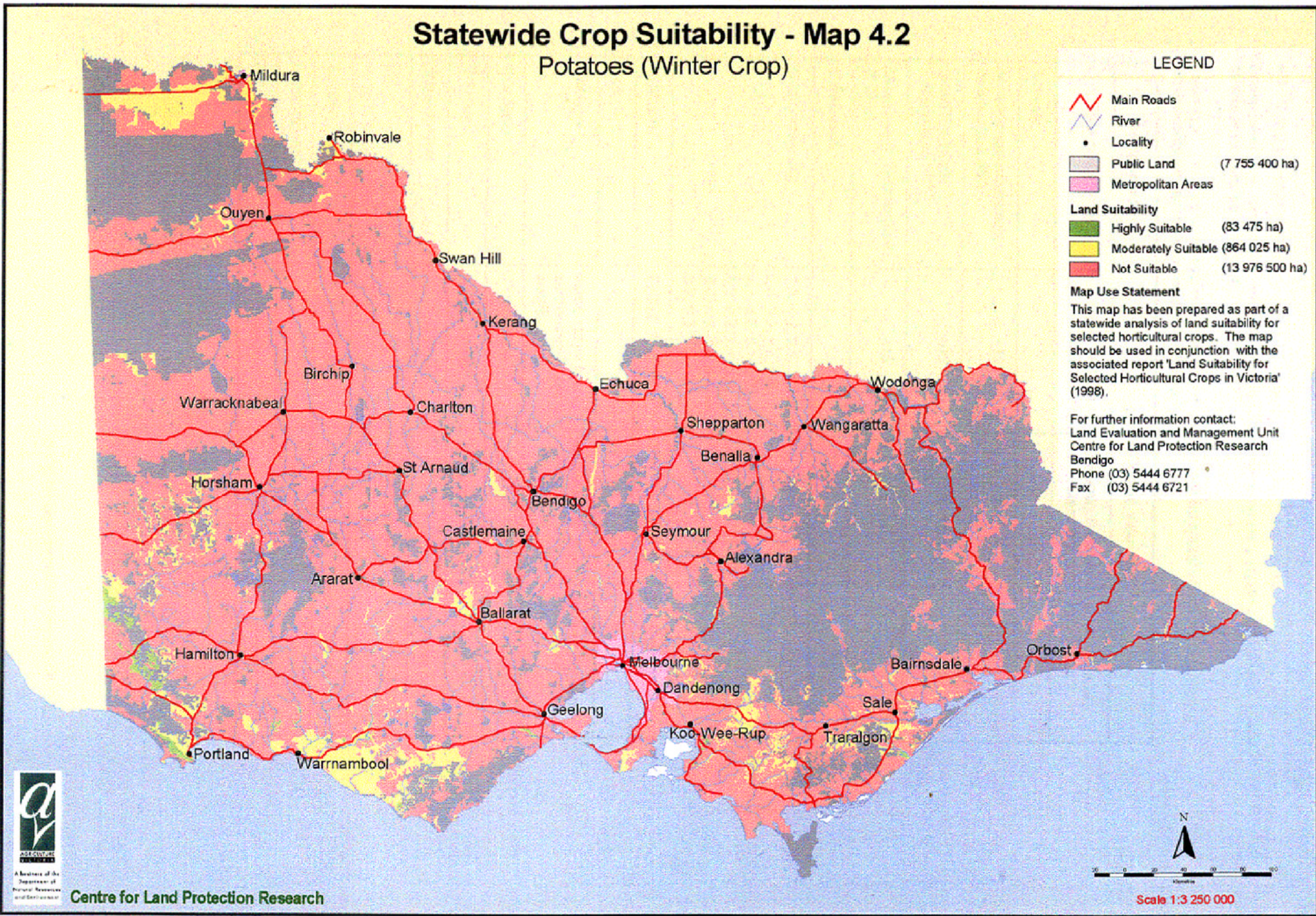
Potatoes (Winter Crop)

LEGEND

-  Main Roads
 -  River
 -  Locality
 -  Public Land (7 755 400 ha)
 -  Metropolitan Areas
- Land Suitability**
-  Highly Suitable (83 475 ha)
 -  Moderately Suitable (864 025 ha)
 -  Not Suitable (13 976 500 ha)

Map Use Statement
 This map has been prepared as part of a statewide analysis of land suitability for selected horticultural crops. The map should be used in conjunction with the associated report 'Land Suitability for Selected Horticultural Crops in Victoria' (1998).

For further information contact:
 Land Evaluation and Management Unit
 Centre for Land Protection Research
 Bendigo
 Phone (03) 5444 6777
 Fax (03) 5444 6721



Map 4.2 Statewide crop suitability - potatoes (winter crop).



Centre for Land Protection Research

