


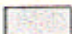

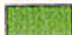

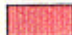


# Statewide Crop Suitability - Map 4.11

## Fresh Market Tomatoes (Summer Crop)

### LEGEND

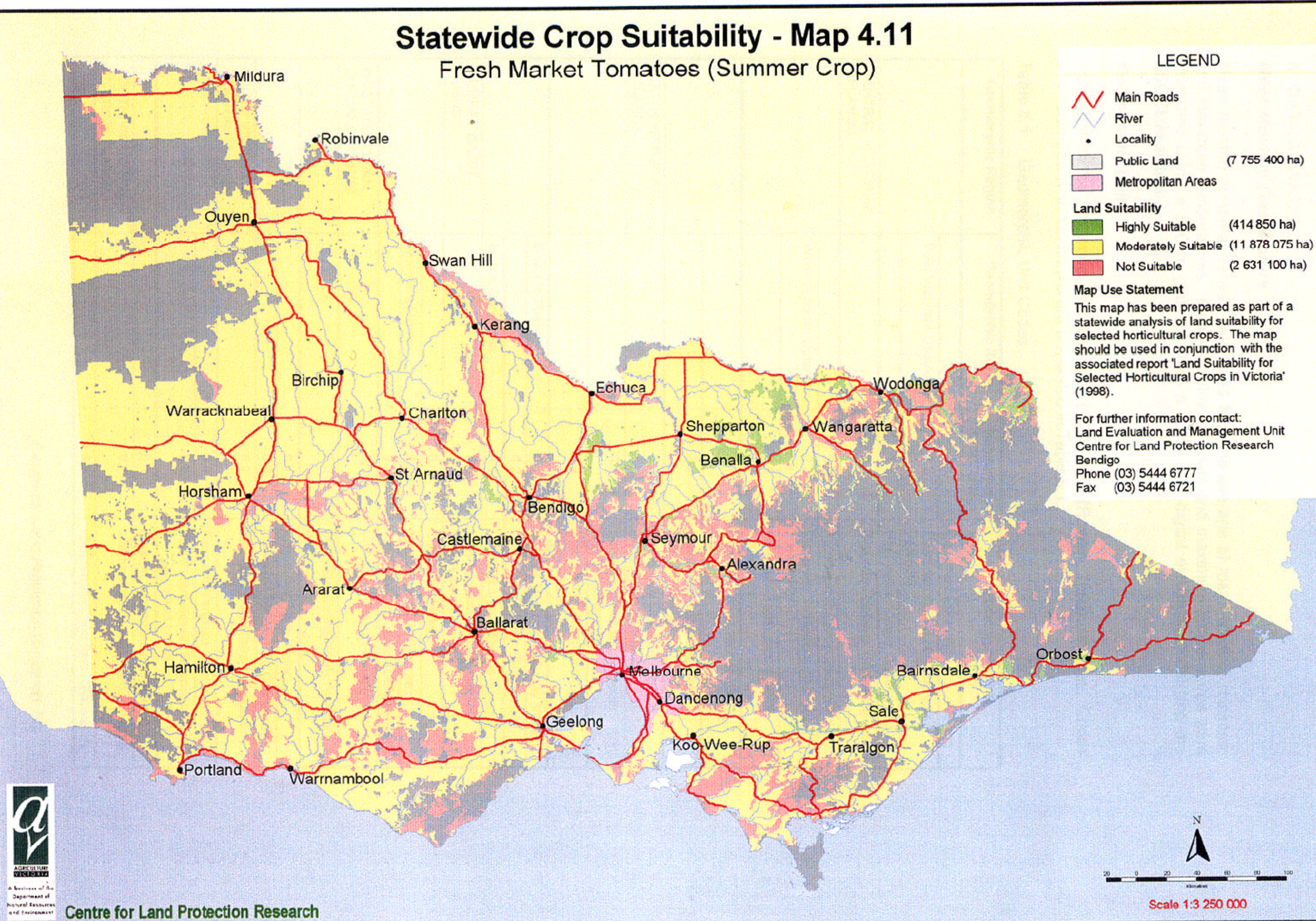
-  Main Roads
  -  River
  -  Locality
  -  Public Land (7 755 400 ha)
  -  Metropolitan Areas
- Land Suitability**
-  Highly Suitable (414 850 ha)
  -  Moderately Suitable (11 878 075 ha)
  -  Not Suitable (2 631 100 ha)

### Map Use Statement

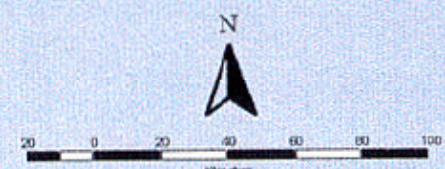
This map has been prepared as part of a statewide analysis of land suitability for selected horticultural crops. The map should be used in conjunction with the associated report 'Land Suitability for Selected Horticultural Crops in Victoria' (1998).

For further information contact:  
 Land Evaluation and Management Unit  
 Centre for Land Protection Research  
 Bendigo  
 Phone (03) 5444 6777  
 Fax (03) 5444 6721

Map 4.11 Statewide crop suitability - fresh market tomatoes (summer crop).



Centre for Land Protection Research



Scale 1:3 250 000