

# Victorian Land Use Information System

## Land Tenure 2012

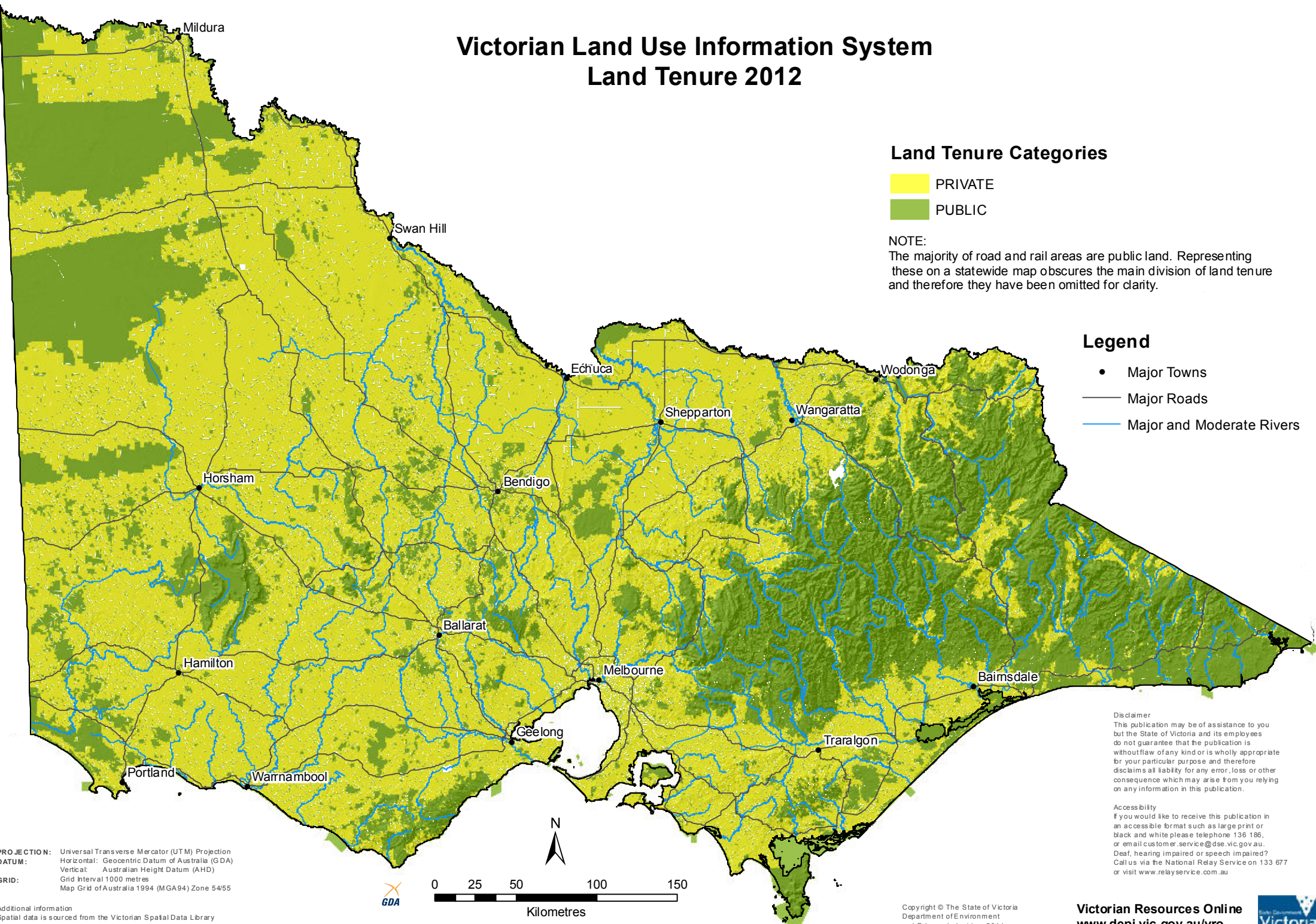
### Land Tenure Categories

- PRIVATE
- PUBLIC

NOTE:  
The majority of road and rail areas are public land. Representing these on a statewide map obscures the main division of land tenure and therefore they have been omitted for clarity.

### Legend

- Major Towns
- Major Roads
- Major and Moderate Rivers

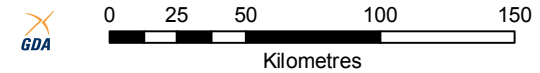


**Disclaimer**  
This publication may be of assistance to you but the State of Victoria and its employees do not guarantee that the publication is without flaw of any kind or is wholly appropriate for your particular purpose and therefore disclaims all liability for any error, loss or other consequence which may arise from you relying on any information in this publication.

**Accessibility**  
If you would like to receive this publication in an accessible format such as large print or black and white please telephone 136 186, or email [customer.service@dse.vic.gov.au](mailto:customer.service@dse.vic.gov.au). Deaf, hearing impaired or speech impaired? Call us via the National Relay Service on 133 677 or visit [www.relayservice.com.au](http://www.relayservice.com.au)

**PROJECTION:** Universal Transverse Mercator (UTM) Projection  
**DATUM:** Horizontal: Geocentric Datum of Australia (GDA)  
Vertical: Australian Height Datum (AHD)  
**GRID:** Grid Interval 1000 metres  
Map Grid of Australia 1994 (MGA94) Zone 54/55

**Additional information**  
Spatial data is sourced from the Victorian Spatial Data Library (VSDL) and/or operational data or data in preparation.



Copyright © The State of Victoria  
Department of Environment  
and Primary Industries, 2014

**Victorian Resources Online**  
[www.depi.vic.gov.au/vro](http://www.depi.vic.gov.au/vro)

