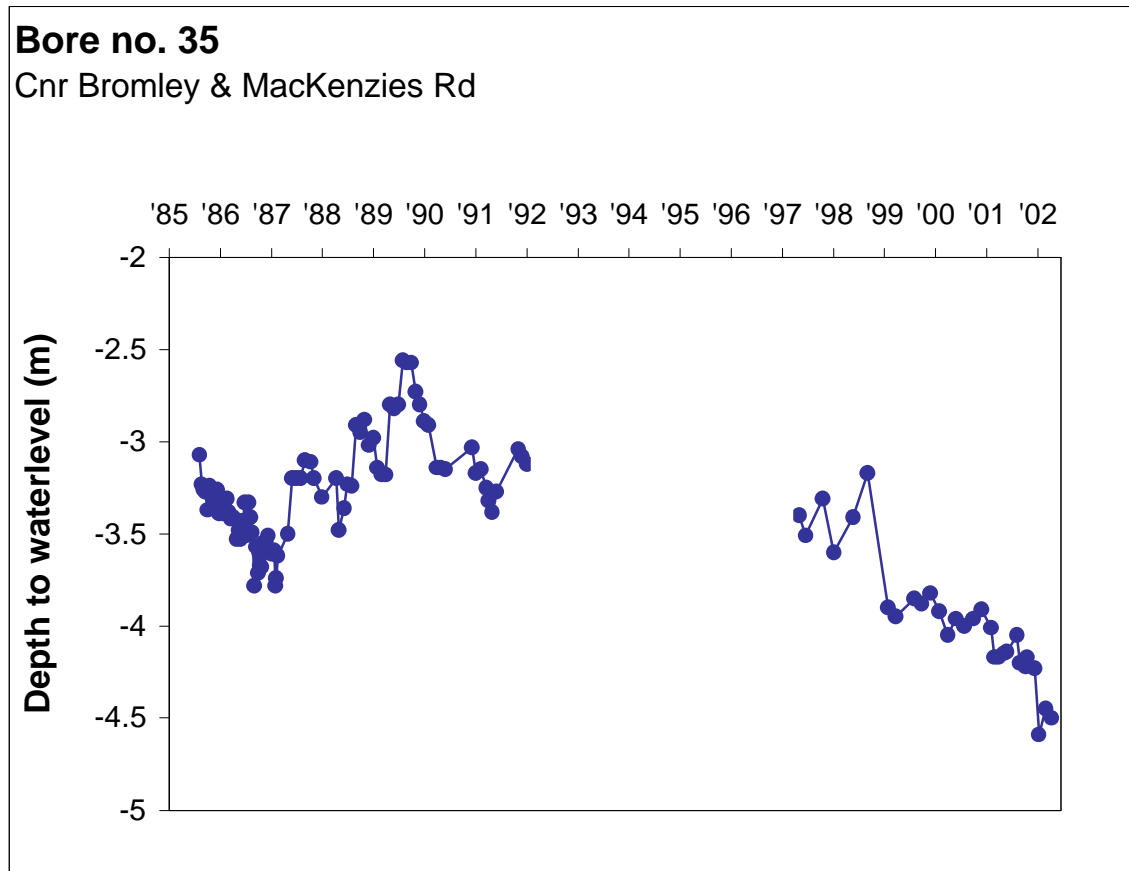


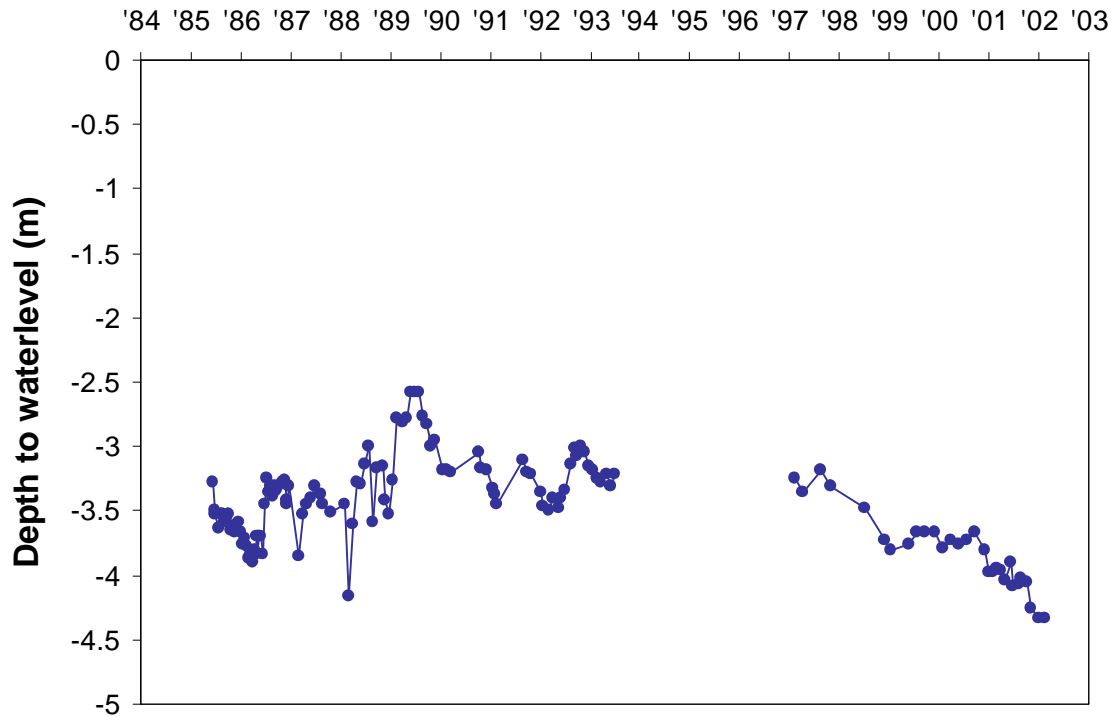
## Appendix 1 Hydrographs of Timor West monitoring bores



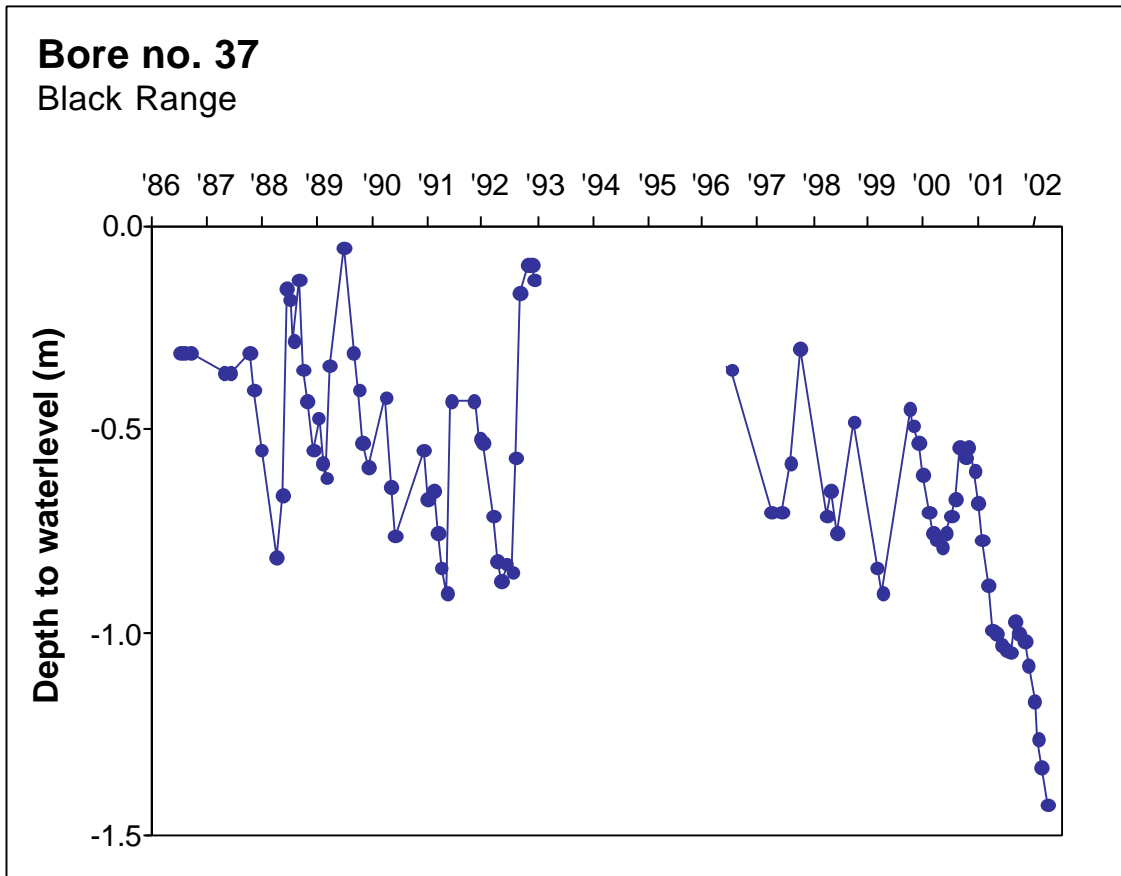
CLPR No:	35	Bore monitor:	DPI
Locality description:	Corner of Bromley and McKenzies Roads Located in Bet Bet Deep Lead Bore located on plain, flat landscape		
Geological description:	Shepparton Formation Fluvial clay, silt, sand and gravel		
Bore depth (m):	60	Average rainfall (mm/yr):	449
Current water depth 2003 (m):	4.5	Salinity (EC) ( $\mu\text{S}/\text{cm}$ ):	2700
Groundwater trend:	Responsive to seasonal climatic variation with an overall falling groundwater trend.		

### Bore no. 36

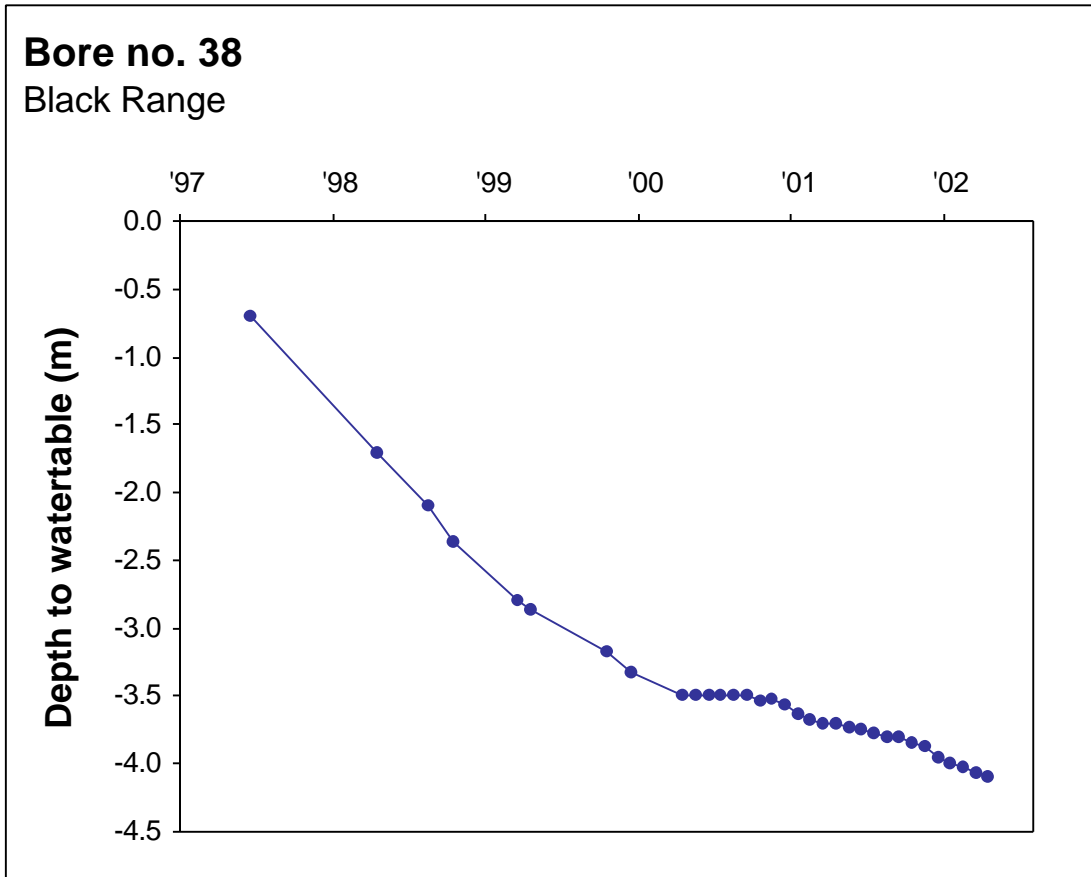
Betley



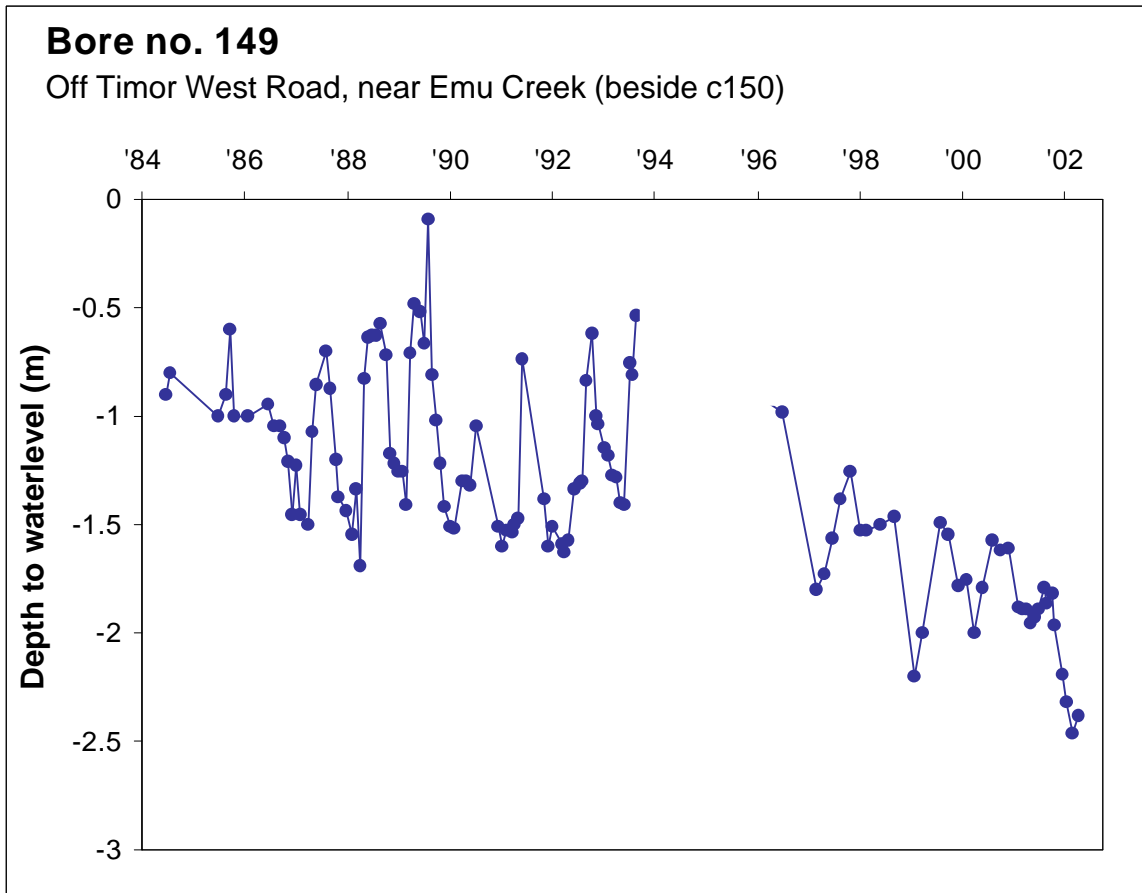
CLPR No:	36	Bore monitor:	DPI
Locality Description:	Betley Bet Bet Deep Lead Bore located in plain, flat landscape		
Geological description:	Shepparton Formation Fluvial clay, silt, sand and gravel		
Bore depth (m):	90	Average rainfall (mm/yr):	449
Current water depth 2003 (m):	4.3	Salinity (EC) (µS/cm):	—
Groundwater trend:	Even groundwater trend, slight fall in waterlevel since 2002.		



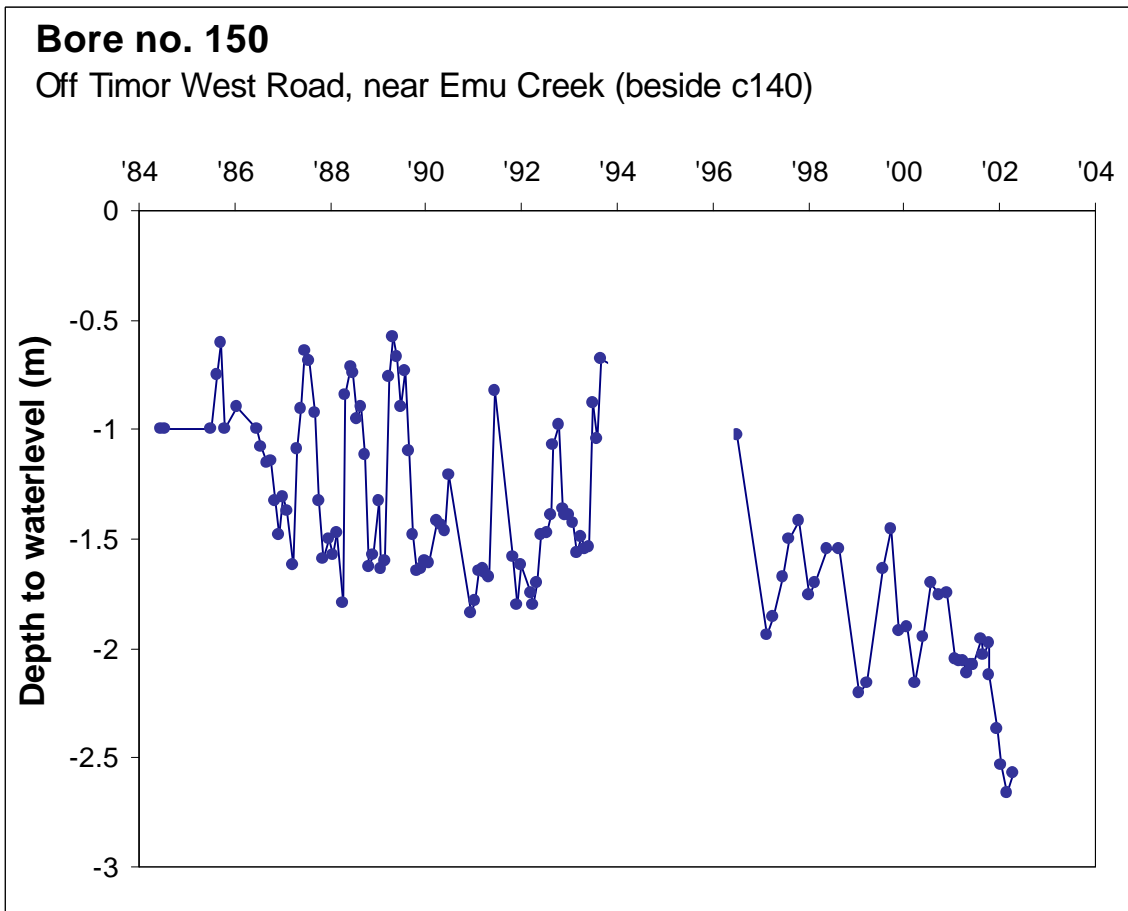
CLPR No:	37	Bore monitor:	Alex Wiseman
Locality description:	Black Range Bore located mid-slope		
Geological description:	Devonian granite and associated metamorphic rocks Clay, sand overlying hard, fresh, granite/metamorphic rock		
Bore depth (m):	18	Average rainfall (mm/yr):	449
Current water depth 2003 (m):	1.8	Salinity (EC) ( $\mu\text{S}/\text{cm}$ ):	—
Groundwater trend:	Very responsive to seasonal rainfall variation, falling trend overall, prominent since 1996		



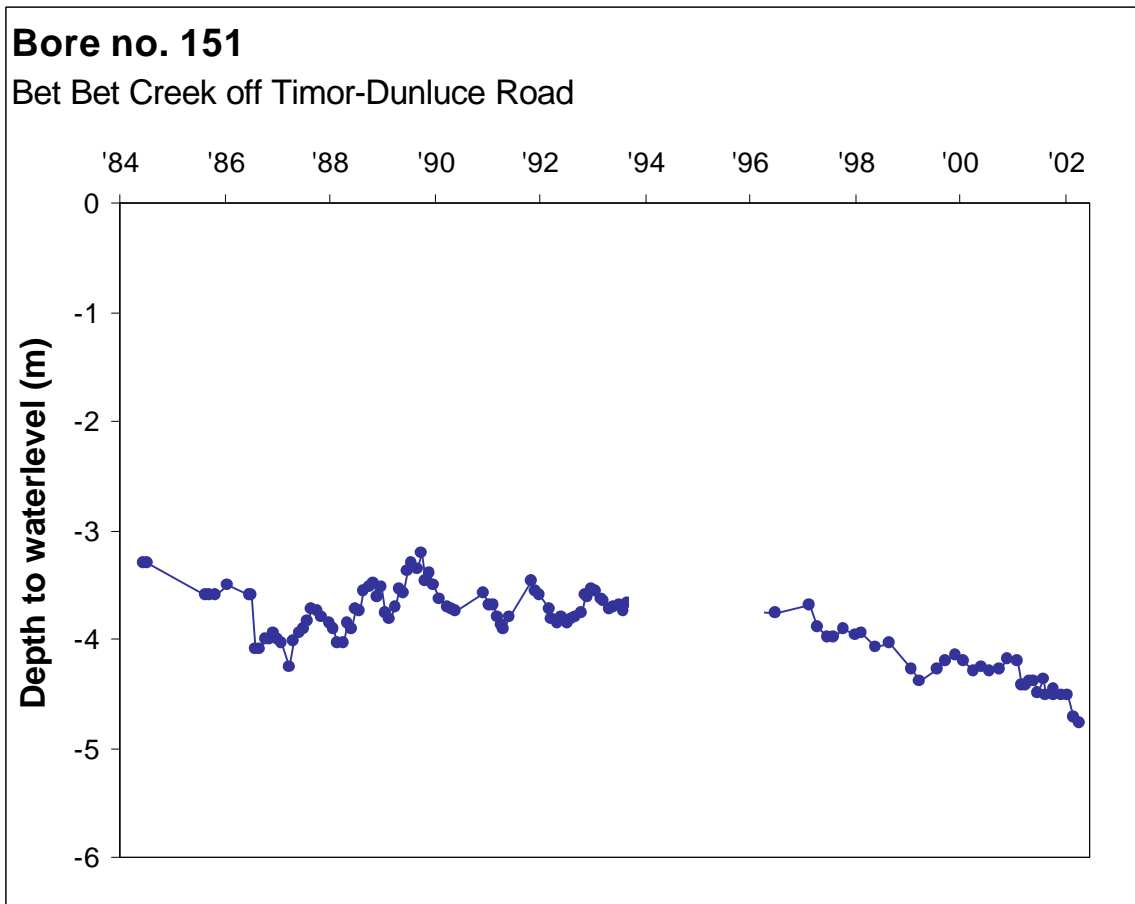
CLPR No:	38	Bore monitor:	Alex Wiseman
Locality description:	Black Range Bore located in plain, flat landscape		
Geological description:	Devonian Granite and associated metamorphic rocks Clay, sand overlying hard, fresh, granite/metamorphic rock		
Bore depth (m):	27	Average rainfall (mm/yr):	449
Current water depth 2003 (m):	4.0	Salinity (EC) (µS/cm):	—
Groundwater trend:	Strong falling trend. Located beside 5121-22. Representative of the last six years.		



CLPR No:	149	Bore monitor:	DPI
Locality description:	Timor West Rd, Timor West Bore located on lower slope, river flat landscape		
Geological description:	Shepparton Formation Fluvial clay, silt, sand and gravel		
Bore depth (m):	15	Average rainfall (mm/yr):	449
Current water depth 2003 (m):	2.5	Salinity (EC) ( $\mu\text{S}/\text{cm}$ ):	—
Groundwater trend:	Strong response to seasonal climatic variation, overall falling trend, steeper falling trend since 1998.		



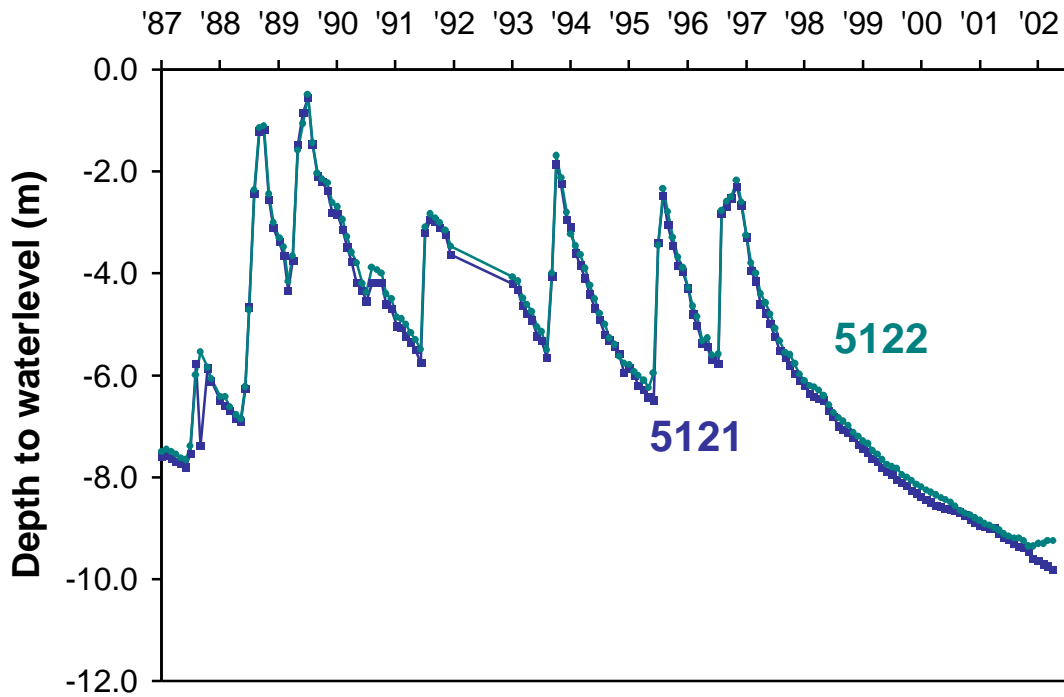
CLPR No:	150	Bore monitor:	DPI
Locality description:	Timor West Rd, Timor West Bore located on lower slope, riverflat landscape.		
Geological description:	Shepparton Formation Fluvial clay, silts, sand and gravel.		
Bore depth (m):	30.7	Average rainfall (mm/yr):	449
Current water depth 2003 (m):	2.5	Salinity (EC) (µS/cm):	—
Groundwater trend:	Strong response to seasonal rainfall. Overall long-term falling trend, falling steeper since 1996.		



CLPR No:	151	Bore monitor:	DPI
Locality description:	Bet Bet Creek Bet Bet Deep Lead Bore located on lower slope, riverflat landscape.		
Geological description:	Shepparton Formation (fluvial clay, silt, sand and gravel) overlying deep lead deposits of coarse sand gravel overlying Tertiary deep lead sediments.		
Bore depth (m):	72	Average rainfall (mm/yr):	449
Current water depth 2003 (m):	4.5	Salinity (EC) (µS/cm):	14 000
Groundwater trend:	Even trend. Some response to climatic variation. Slight falling trend since 1998.		

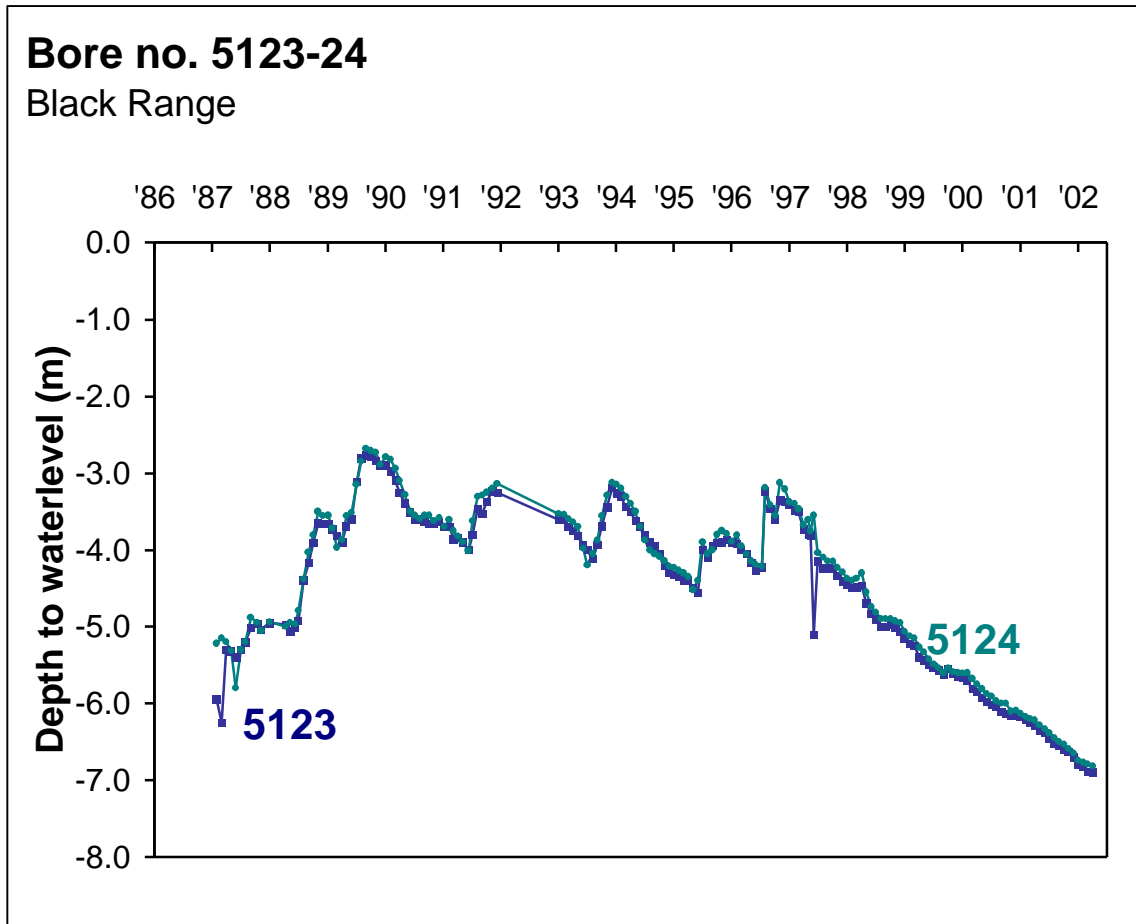
**Bore no. 5121-22**

Black Range

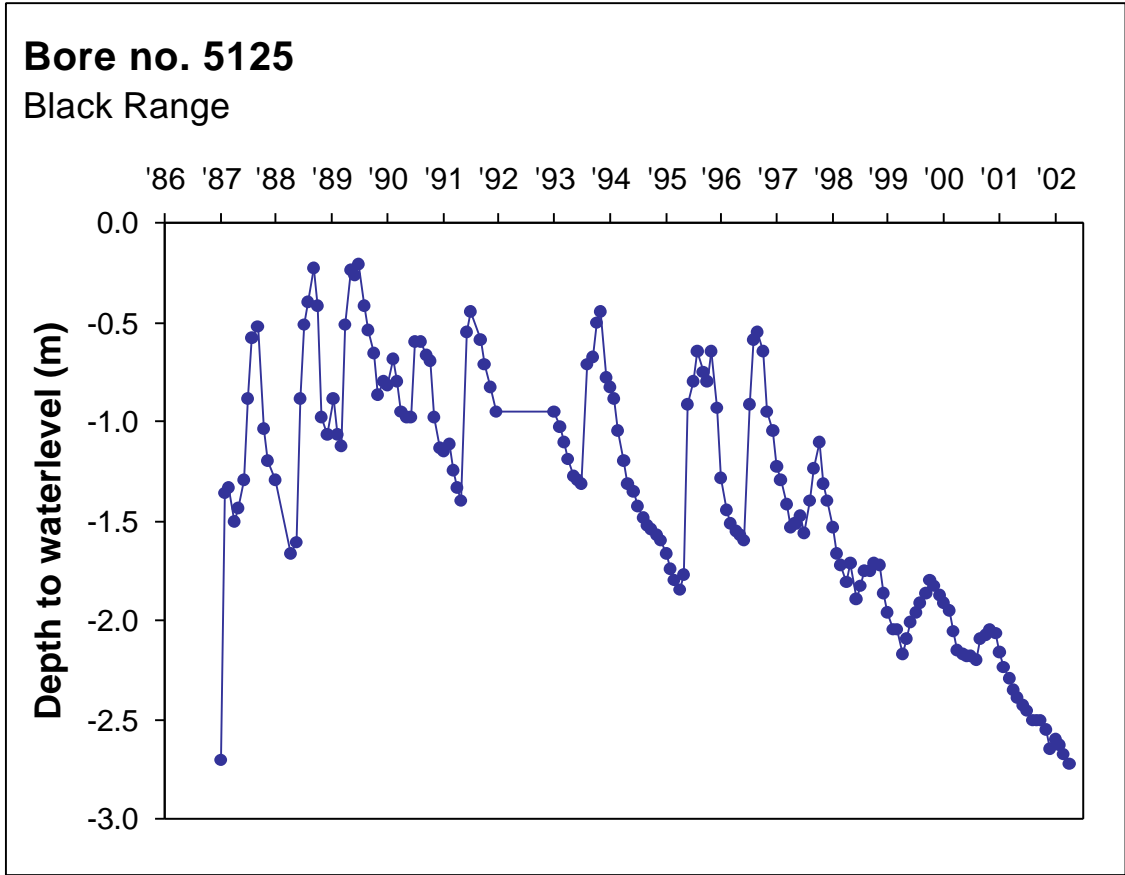


CLPR No:	5121, 5122	Bore monitor:	Alex Wiseman
Locality description:	Black Range Bore located mid-slope		
Geological description:	Devonian granite and associated metamorphic rocks Clay, sand overlying hard, fresh, granite/metamorphic rock		
Bore depth (m):	5121 = 18.5 5122 = 10.0	Average rainfall (mm/yr):	449
Current water depth 2003 (m):	5121 = 9.8 5122 = 9.6	Salinity (EC) (µS/cm):	—
Groundwater trend:	Strong response to seasonal rainfall variation until mid 1997, very strong falling trend since late 1996.		

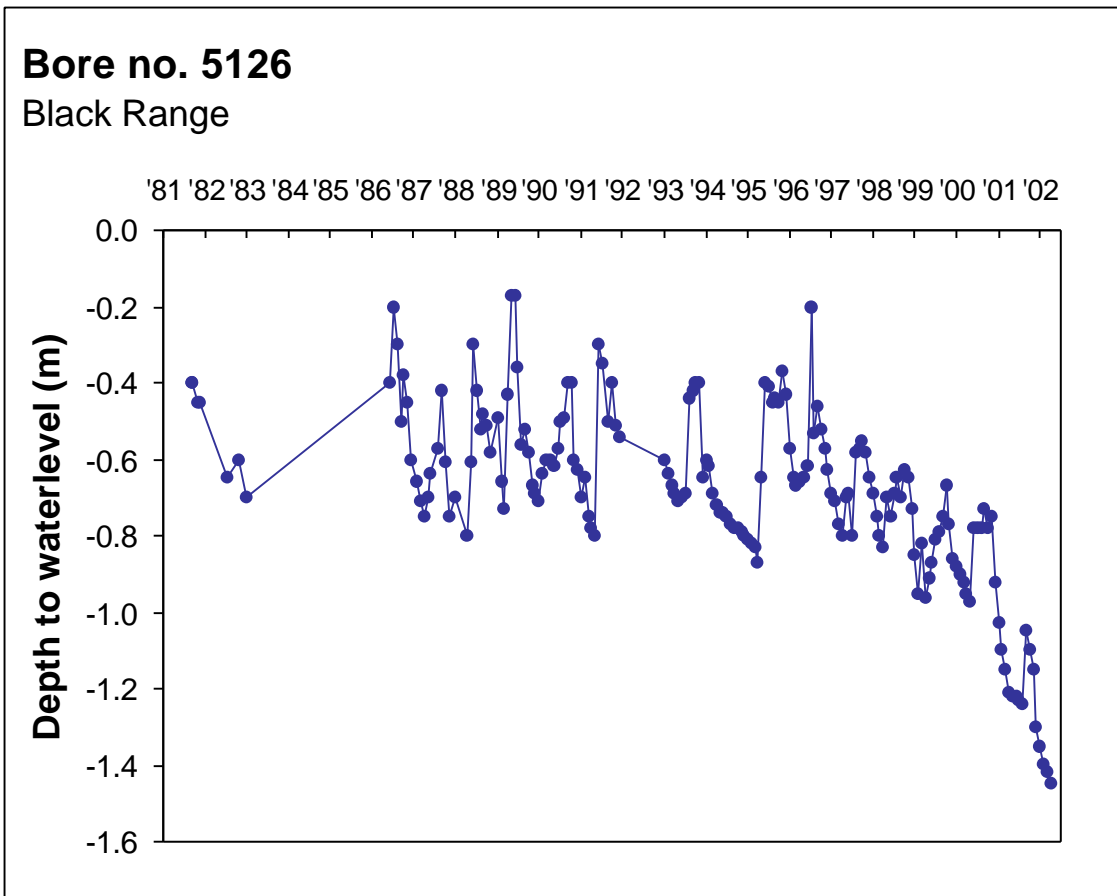




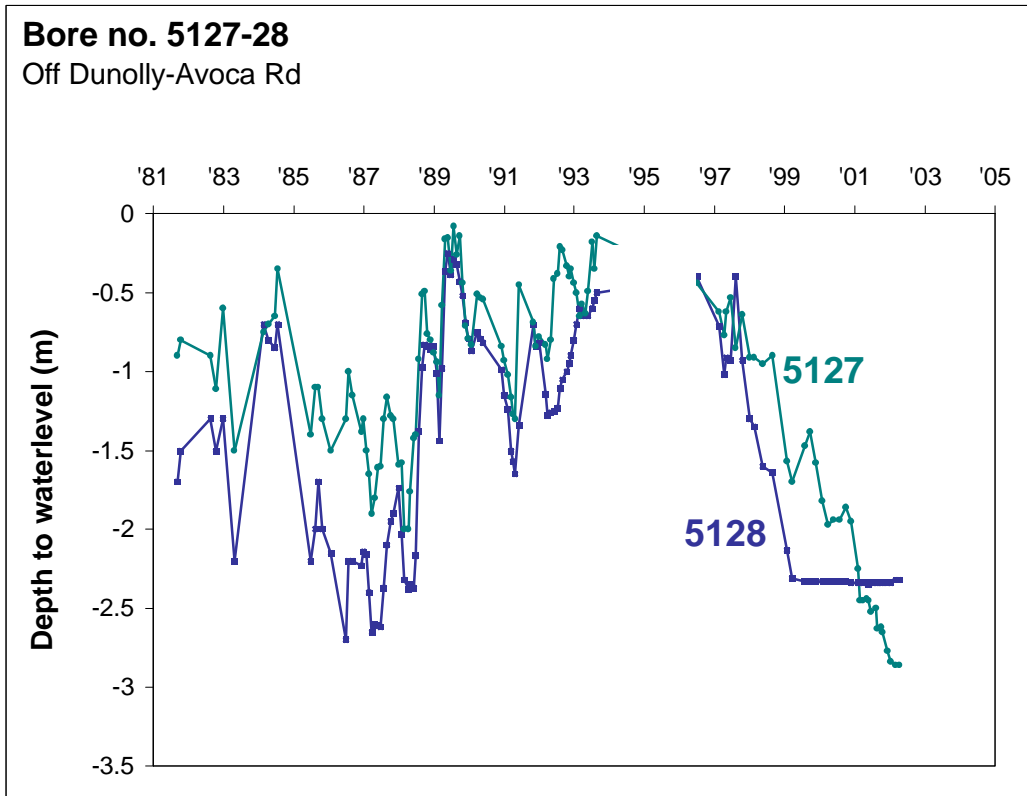
CLPR No:	5123, 5124	Bore monitor:	Alex Wiseman
Locality description:	Black Range Bore located lower slope		
Geological description:	Devonian granite and associated metamorphic rocks Clay, sand overlying hard, fresh, granite/metamorphic rock		
Bore depth (m):	5123 = 18.5 5124 = 10.0	Average rainfall (mm/yr):	449
Current water depth 2003 (m):	5123 = 8.0 5124 = 8.0	Salinity (EC) (µS/cm):	5123 = 7930 5124 = 4370
Groundwater trend:	Strong response to seasonal rainfall variation until mid 1997, very strong falling trend since late 1996.		



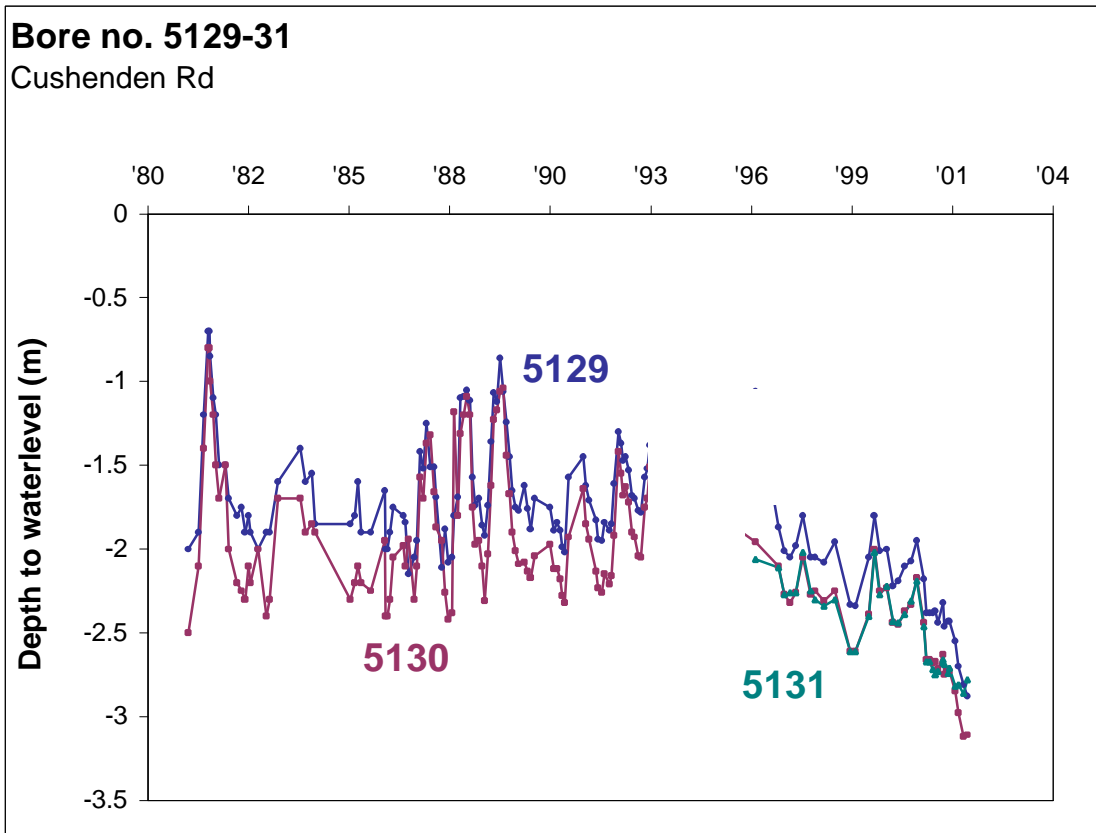
CLPR No:	5125	Bore monitor:	Alex Wiseman
Locality description:	Black Range Bore located in low-lying point, in discharge site		
Geological description:	Devonian granite and associated metamorphic rocks Clay, sand overlying hard, fresh, granite/metamorphic rock		
Bore depth (m):	6.0	Average rainfall (mm/yr):	449
Current water depth 2003 (m):	2.7	Salinity (EC) (µS/cm):	5200
Groundwater trend:	Strong response to seasonal rainfall variation until mid 1997, very strong falling trend since late 1996.		



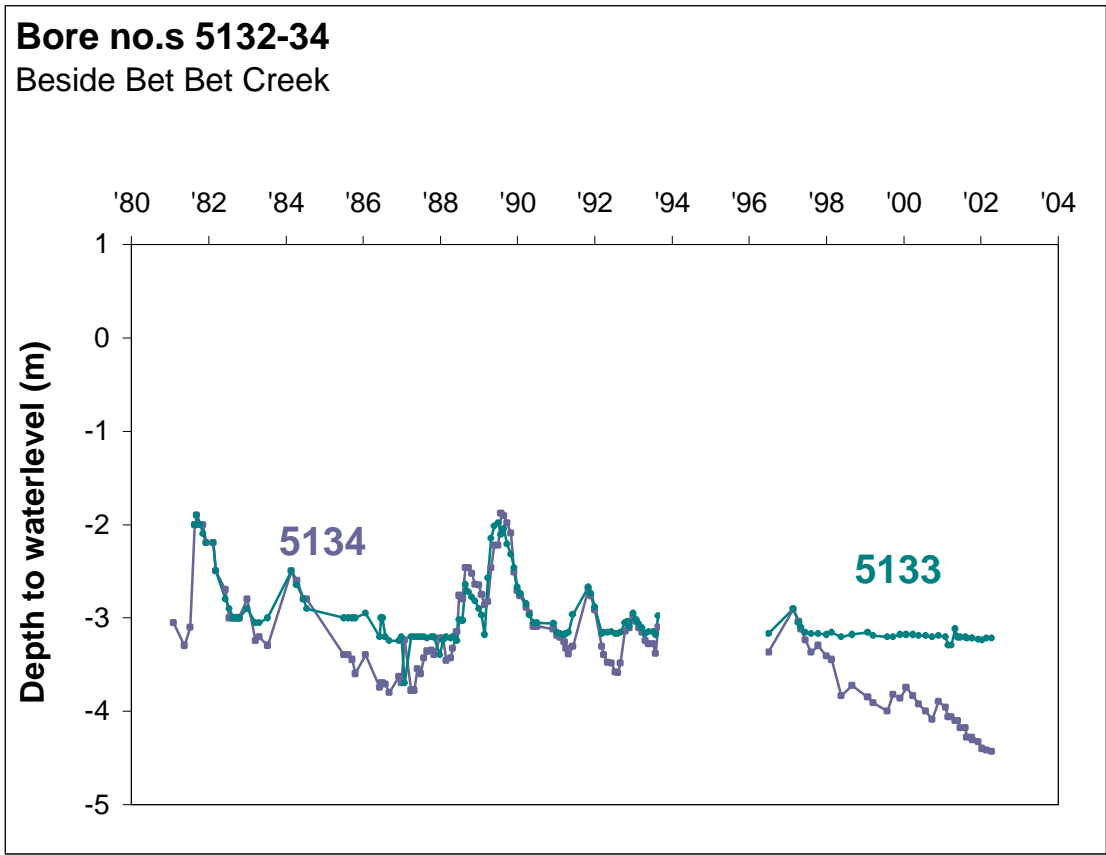
CLPR No:	5126	Bore monitor:	Alex Wiseman
Locality description:	Black Range		
Geological description:	Devonian granite and associated metamorphic rocks Clay, sand overlying hard, fresh, granite/metamorphic rock		
Bore depth (m):	6.0	Average rainfall (mm/yr):	449
Current water depth 2003 (m):	1.4	Salinity (EC) ( $\mu\text{S}/\text{cm}$ ):	14 020
Groundwater trend:	Strong response to seasonal climatic variation. Even trend until 1996, when there is a strong fall in the hydrograph.		



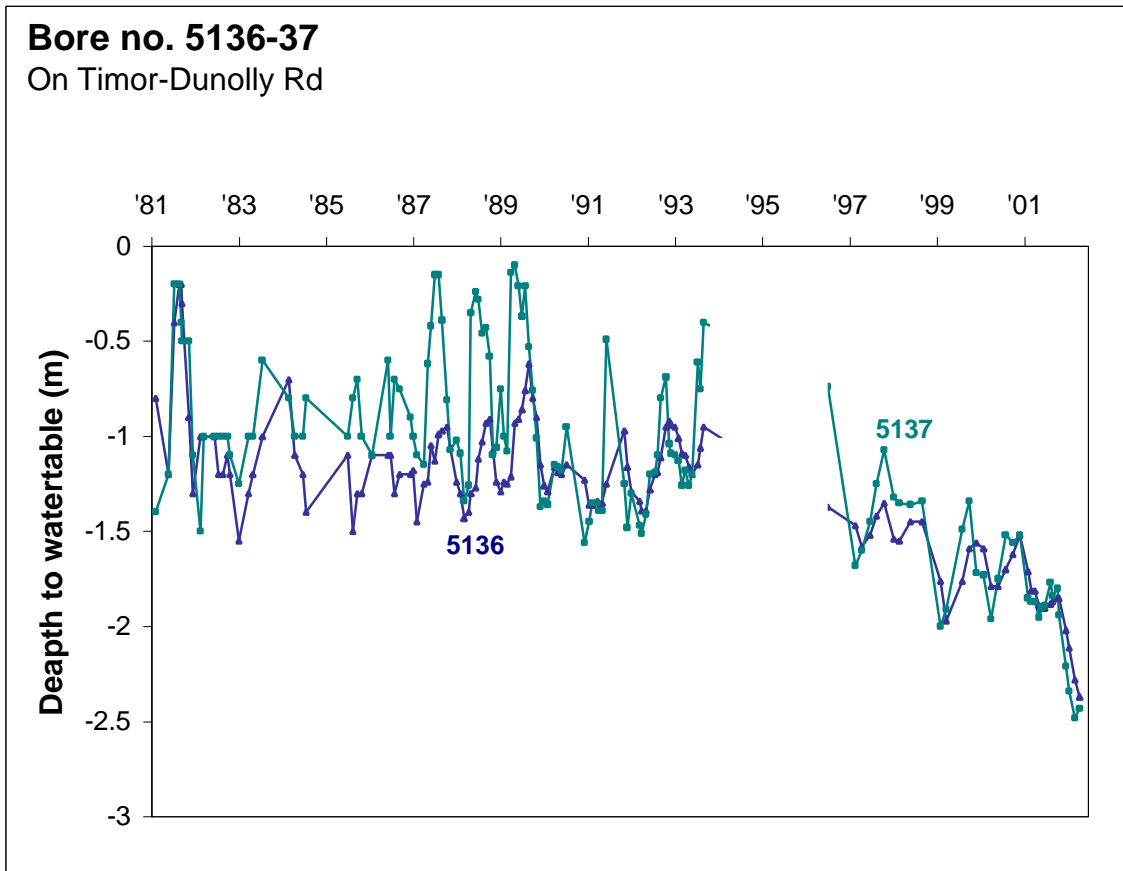
CLPR No:	5127, 5128	Bore monitor:	CLPR
Locality description:	Dunolly–Avoca Road Black Range		
Geological description:	Devonian granite and associated metamorphic rocks Clay, sand overlying hard, fresh, granite/metamorphic rock		
Bore depth (m):	5127 = 2.9 5128 = 2.3	Average rainfall (mm/yr):	449
Current water depth 2003 (m):	5127 = 2.9 5128 = 2.3	Salinity (EC) (µS/cm):	5127 = 15 840 5128 = 6160
Groundwater trend:	Strong response to local climatic variation obvious in the hydrograph. In both bores the watertable has fallen below the bottom of each bore.		



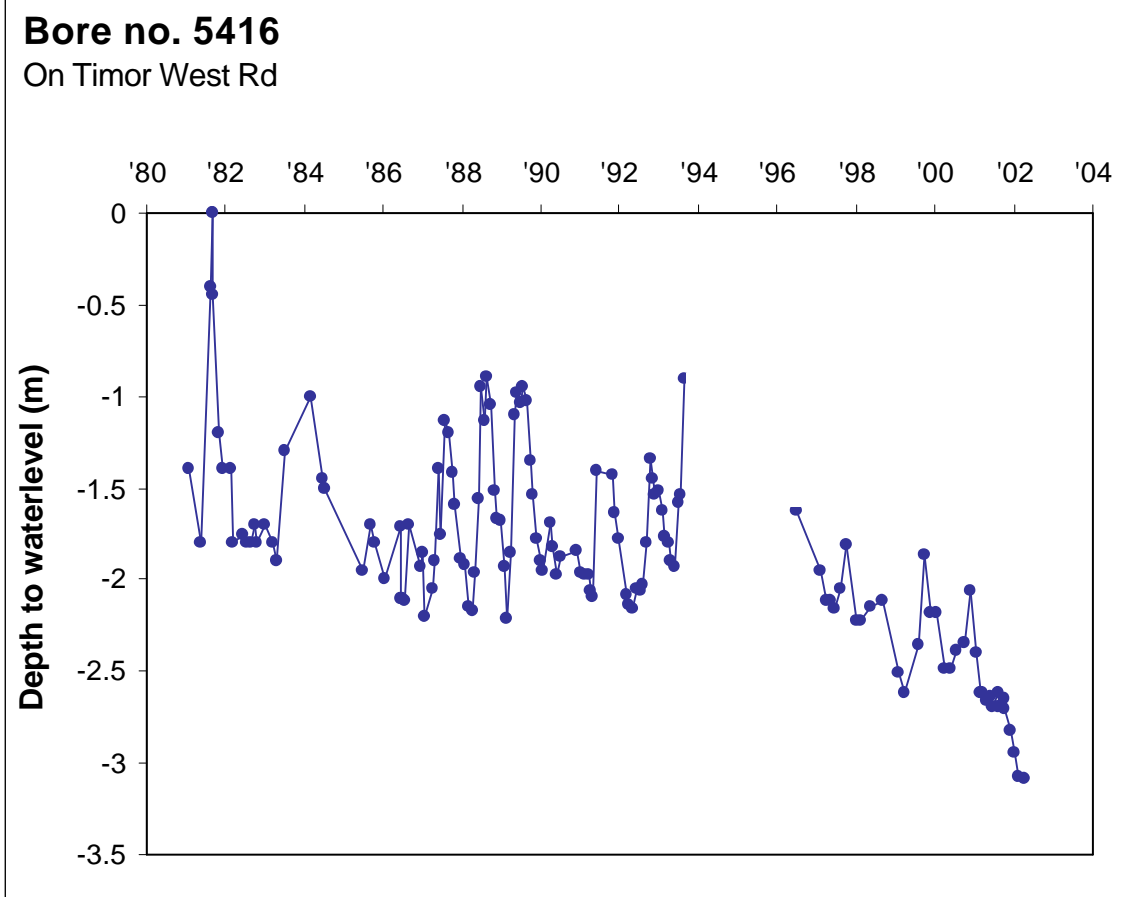
CLPR No:	5129, 5130, 5131	Bore monitor:	CLPR
Locality description:	Cushenden Road Timor		
Geological description:	Shepparton Formation (fluvial clay, silt, sand and gravel) overlying subsurface basalt flow (Quaternary olivine volcanics) overlying Ordovician sedimentary bedrock		
Bore depth (m):	5129 = 16.5 5130 = 6.7 5131 = 3.0	Average rainfall (mm/yr):	449
Current water depth 2003 (m):	5129 = 3.2 5130 = 3.2 5131 = 2.7	Salinity (EC) (µS/cm):	—
Groundwater trend:	Strong response to local climatic variation with a strong overall falling trend observed since late 1996.		



CLPR No:	5132, 5133, 5134	Bore monitor:	CLPR
Locality description:	Beside Bet Bet Creek		
Geological description:	Shepparton Formation (fluvial clay, silt, sand and gravel) overlying subsurface basalt flow (Quaternary olivine volcanics) overlying Ordovician sedimentary bedrock		
Bore depth (m):	5133 = 5.0 5134 = 3.0	Average rainfall (mm/yr):	449
Current water depth 2003 (m):	5133 = 3.0 5134 = 4.0	Salinity (EC) (µS/cm):	5133 = 5150 5134 = —
Groundwater trend:	Varied response to local climatic variation. Relatively even trend. 5132 shows that the watertable has fallen below the bore depth, 5133 shows a slight falling trend since 1998 and 5134 shows a possible data error.		



CLPR No:	5136, 5137	Bore monitor:	CLPR
Locality description:	Timor–Dunolly Road		
Geological description:	Shepparton Formation (fluvial clay, silt, sand and gravel) overlying subsurface basalt flow (Quaternary olivine volcanics) overlying Ordovician sedimentary bedrock		
Bore depth (m):	5136 = 20 5137 = 3	Average rainfall (mm/yr):	449
Current water depth 2003 (m):	5136 = 2.5 5137 = 2.5	Salinity (EC) (µS/cm):	—
Groundwater trend:	Strong response to local climatic variation. Strong fall in overall trend since 1996, even trend until 1996.		

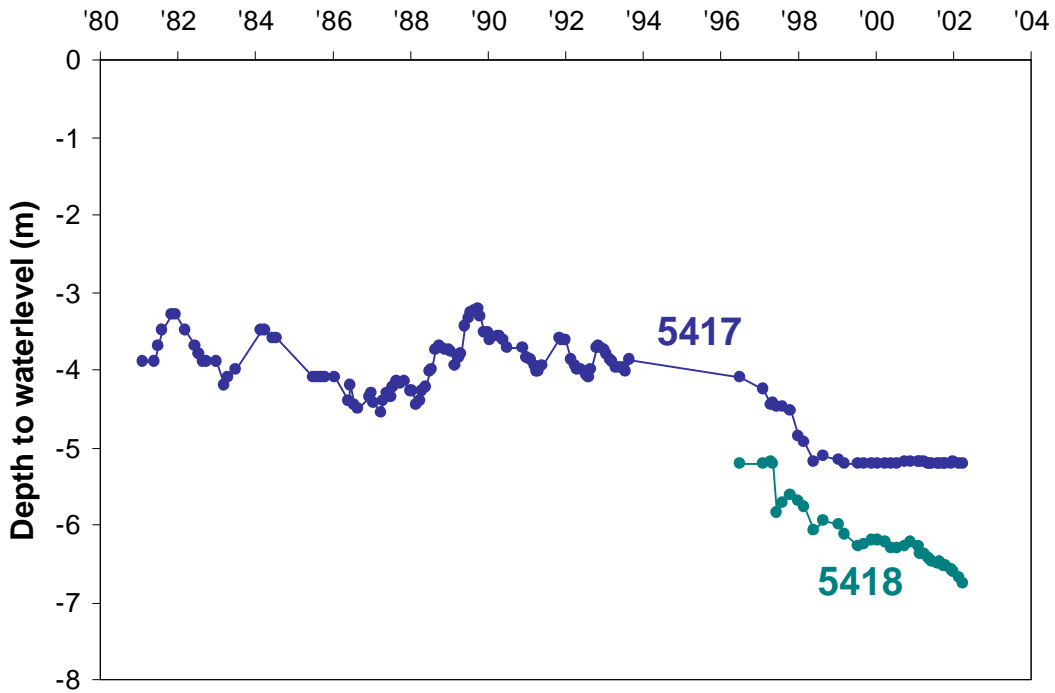


CLPR No:	5416	Bore monitor:	CLPR
Locality description:	Timor West Road Timor West		
Geological description:	Shepparton Formation (fluvial clay, silt, sand and gravel) overlying subsurface basalt flow (Quaternary olivine volcanics) overlying Ordovician sedimentary bedrock		
Bore depth (m):	4.41	Average rainfall (mm/yr):	449
Current water depth 2003 (m):	3.1	Salinity (EC) (µS/cm):	3950
Groundwater trend:	Overall falling groundwater trend. Strong response to local climatic variation. Steeper fall in overall trend since 1996.		

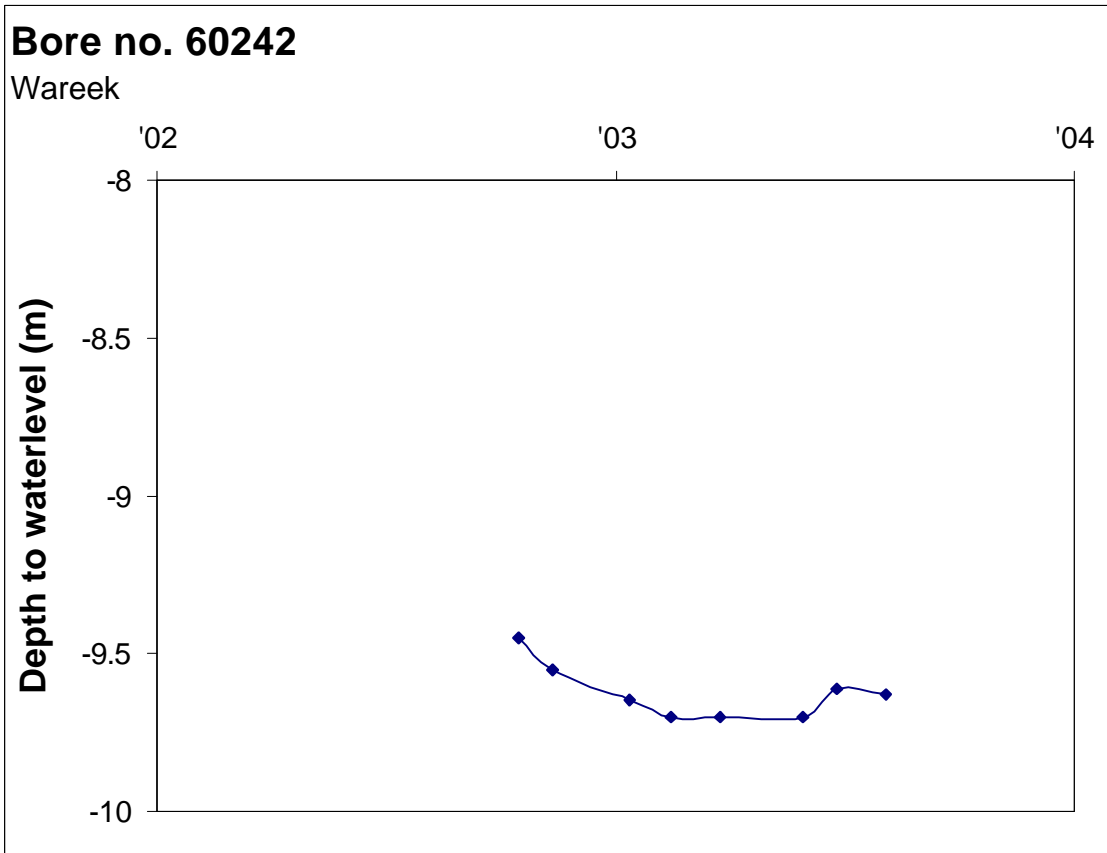


### Bore no 5417-18

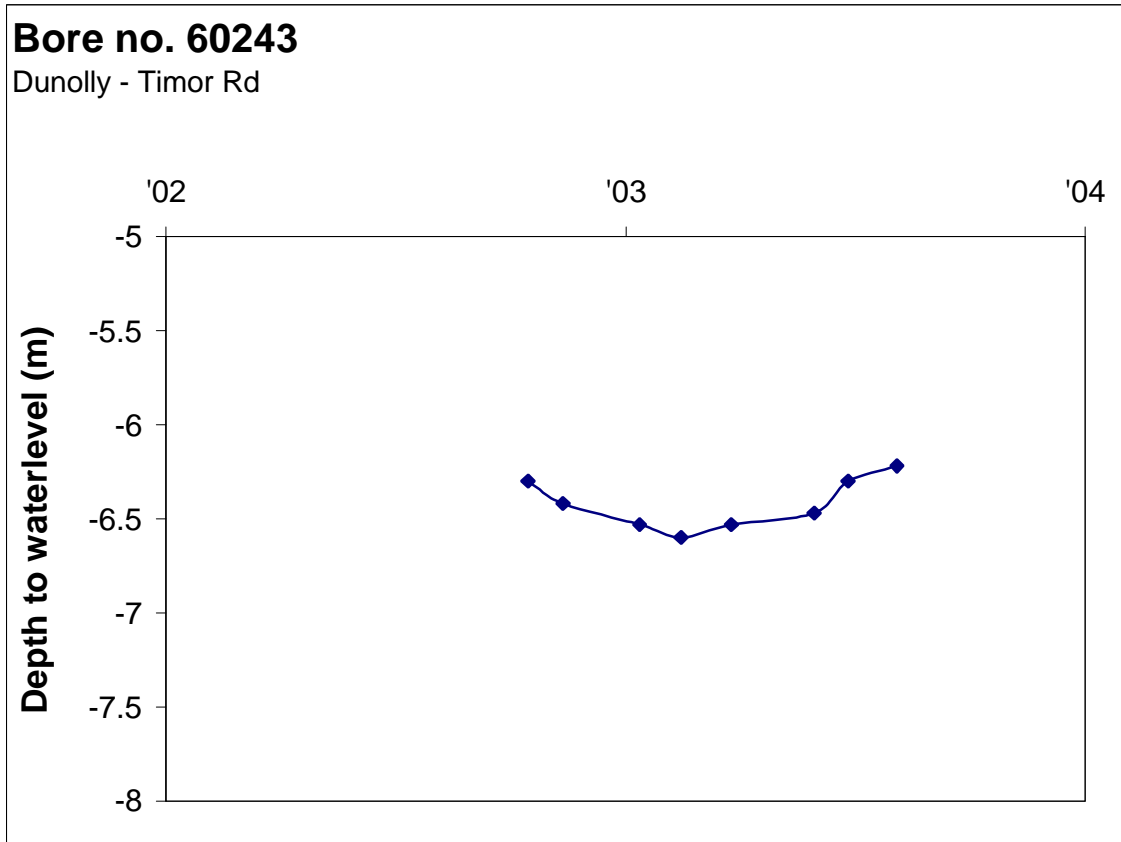
On Timor-Dunolly Rd



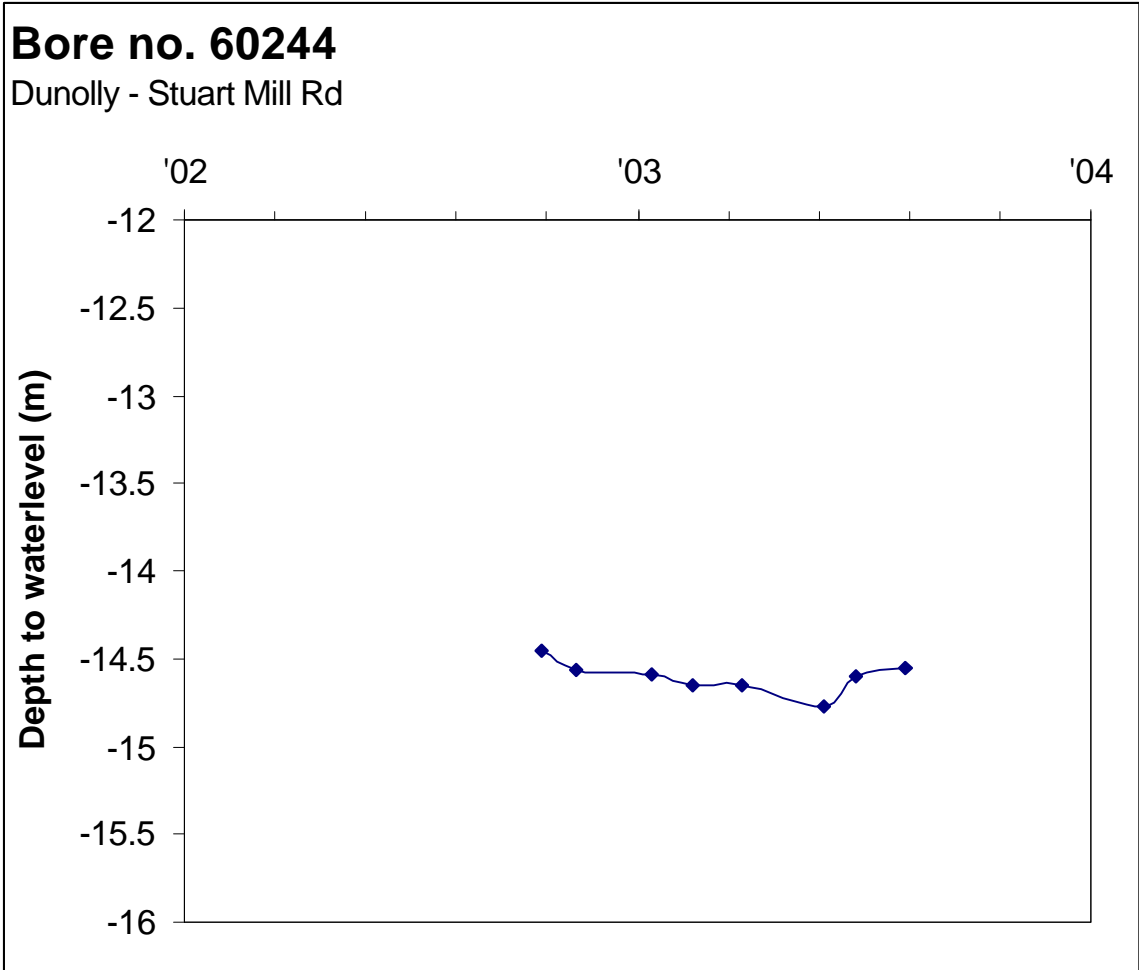
CLPR No:	5417, 5418	Bore monitor:	CLPR
Locality description:	Timor–Dunolly Road Timor		
Geological description:	Shepparton Formation (fluvial clay, silt, sand and gravel) overlying subsurface basalt flow (Quaternary olivine volcanics) overlying Ordovician sedimentary bedrock		
Bore depth (m):	5417 = 5.22 5418 = 17.1	Average rainfall (mm/yr):	449
Current water depth 2003 (m):	5417 = 5.22 5418 = 6.8	Salinity (EC) (µS/cm):	5417 = 13 600 5418 = 8510
Groundwater trend:	Even groundwater trend with a slight response to local climate. Falling steeply since 1996. 5417, waterlevel has fallen below bore depth.		



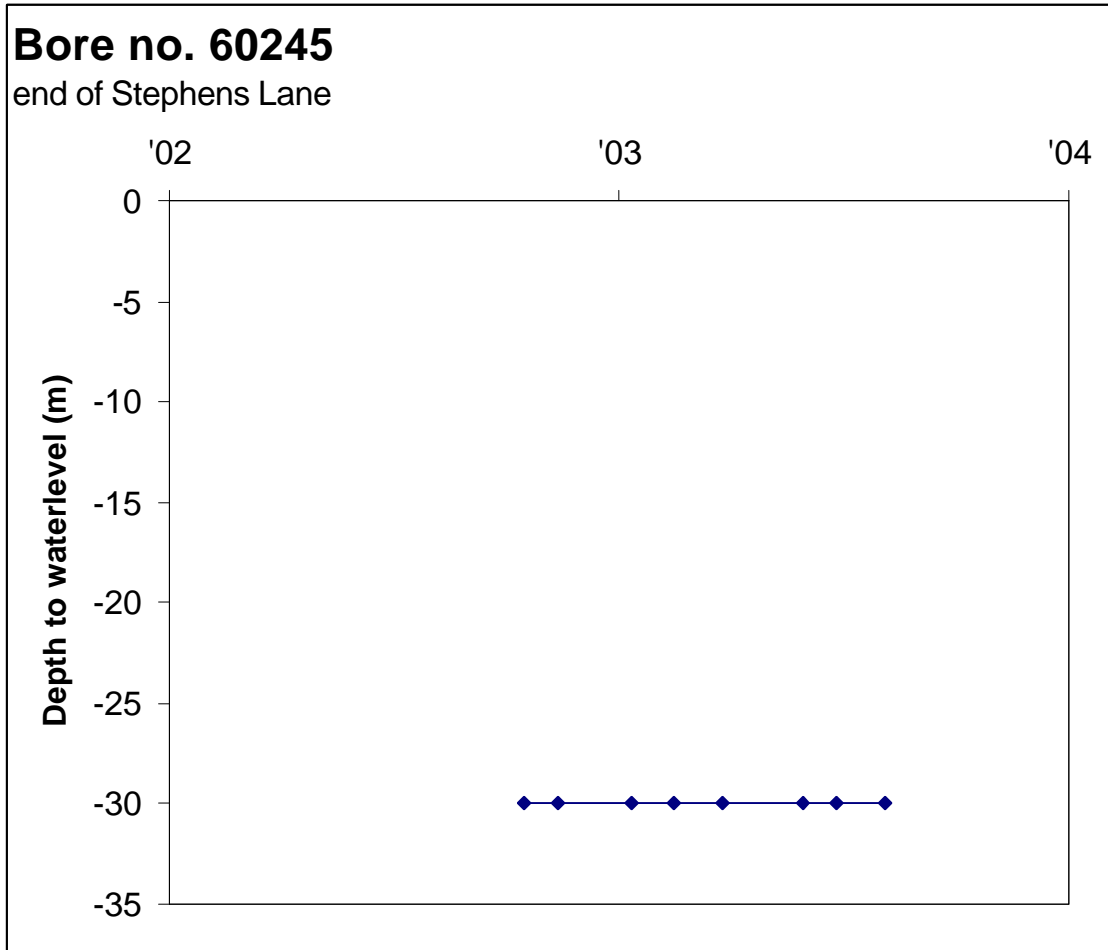
CLPR No:	60242	Bore monitor:	David Schuppan
Locality description:	Wareek Bore located in lower slope		
Geological description:	Shepparton Formation Fluvial clay, silt, sand and gravel		
Bore depth (m):	12	Average rainfall (mm/yr):	449
Current water depth 2003 (m):	9.6	Salinity (EC) (µS/cm):	1800
Groundwater trend:	New bore. Shows a falling groundwater trend		



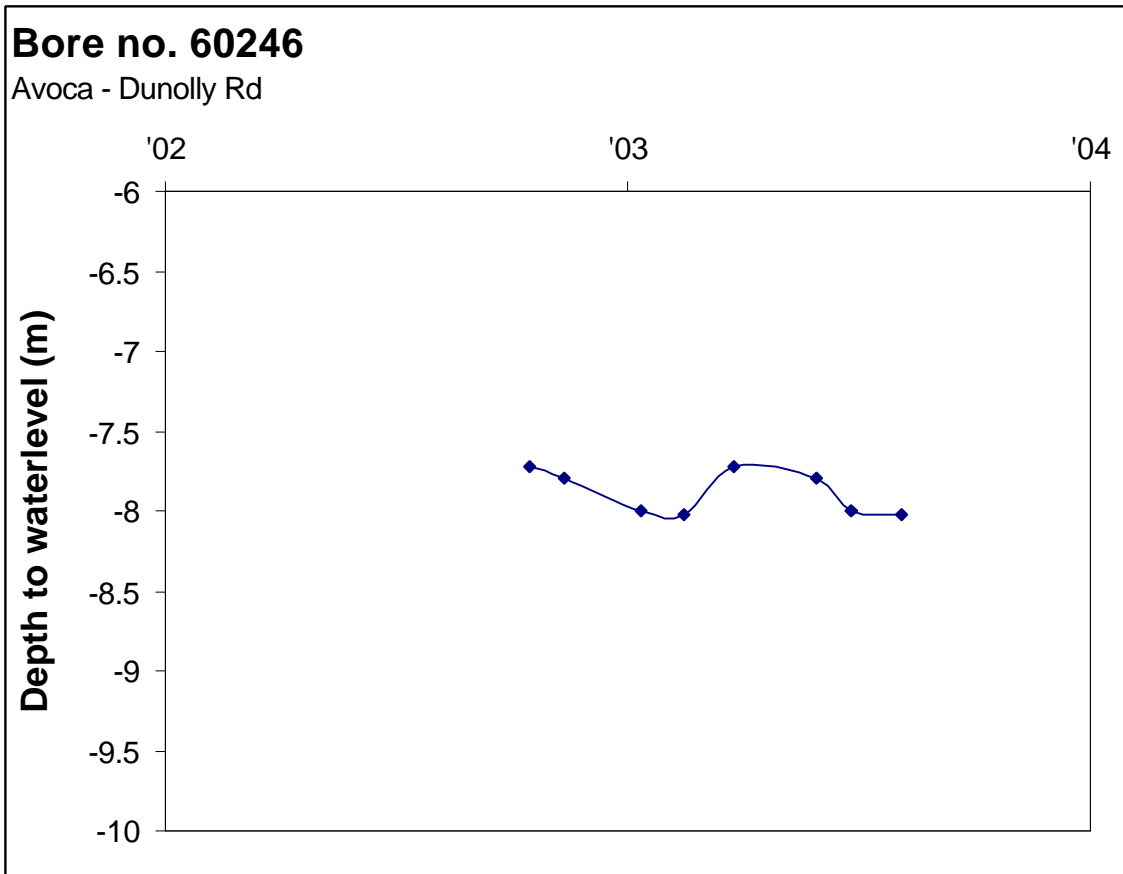
CLPR No:	60243	Bore monitor:	David Schuppan
Locality description:	Timor- Dunolly Road		
Geological description:	Shepparton Formation Fluvial clay, silt, sand and gravel		
Bore depth (m):	11.5	Average rainfall (mm/yr):	449
Current water depth 2003 (m):	6.2	Salinity (EC) (µS/cm):	3000
Groundwater trend:	New bore. Shows an even groundwater trend. Waterlevel has risen in response to recent rainfall.		



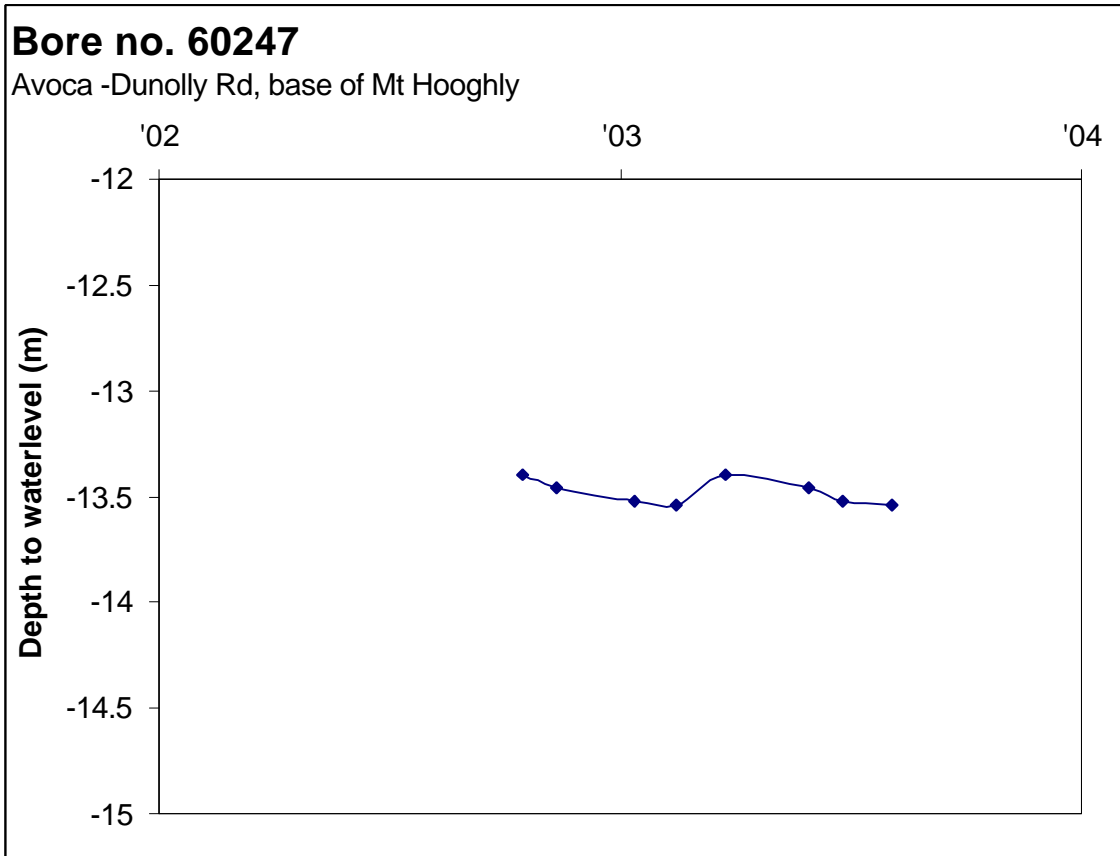
CLPR No:	60244	Bore monitor:	David Schuppan
Locality description:	Dunolly–Stuart Mill Rd Bore located in flat, plain landscape		
Geological description:	Shepparton Formation Fluvial clay, silt, sand deposits		
Bore depth (m):	20.5	Average rainfall (mm/yr):	449
Current water depth 2003 (m):	4.6	Salinity (EC) (µS/cm):	13000
Groundwater trend:	New bore. Shows an even groundwater trend. Waterlevel has risen in response to recent rainfall.		



CLPR No:	60245	Bore monitor:	David Schuppan
Locality description:	North-west of Mr Hooghly. Bore located in mid slope, end of Stephens Rd		
Geological description:	Devonian granite and associated metamorphic rocks Clay, sand overlying hard, fresh, granite/metamorphic rock		
Bore depth (m):	30	Average rainfall (mm/yr):	449
Current water depth 2003 (m):	Dry bore	Salinity (EC) (µS/cm):	Dry bore
Groundwater trend:	Dry bore. Watertable deeper than depth of bore.		



CLPR No:	60246	Bore monitor:	David Schuppan
Locality description:	Dunolly–Avoca Rd. Bore located mid slope.		
Geological description:	Devonian granite and associated metamorphic rocks Clay, sand overlying hard, fresh, granite/metamorphic rock		
Bore depth (m):	12	Average rainfall (mm/yr):	449
Current water depth 2003 (m):	8.0	Salinity (EC) (µS/cm):	3100
Groundwater trend:	New bore. Shows a falling groundwater trend		



CLPR No:	60247	Bore monitor:	David Schuppan
Locality description:	Avoca–Dunolly Rd Bore located in lower, river flat		
Geological description:	Shepparton Formation Fluvial clay, silt, sand and gravel		
Bore depth (m):	17	Average rainfall (mm/yr):	449
Current water depth 2003 (m):	9.6	Salinity (EC) (µS/cm):	>20 000
Groundwater trend:	New bore. Shows a falling groundwater trend and responsive to local climatic variation.		