

## References

Day, M.F. (1980). Research Advances in Tree Decline. *In* 'Focus on Farm Trees'. (Eds N.M. Oates, P.J. Greig, D.G. Hill, P.A. Langley and A.J. Reid.) pp. 41-48 (Natural Resources Conservation League of Victoria, Springvale, Victoria)

Department of Conservation and Environment (1992) Land for Wildlife Note. Natural Regeneration: Principles and Practice.

Grose, R.J. (1980). Tree Decline – 'Where and Why'. *In* 'Focus on Farm Trees'. (Eds N.M. Oates, P.J. Greig, D.G. Hill, P.A. Langley and A.J. Reid.) pp. 19-25 (Natural Resources Conservation League of Victoria, Springvale, Victoria)

Howard, J.L. & McDonald, S. (2002). Two case studies of re-vegetation programs on farms in North East Victoria. Charles Sturt University, Johnstone Centre, Albury, New South Wales.

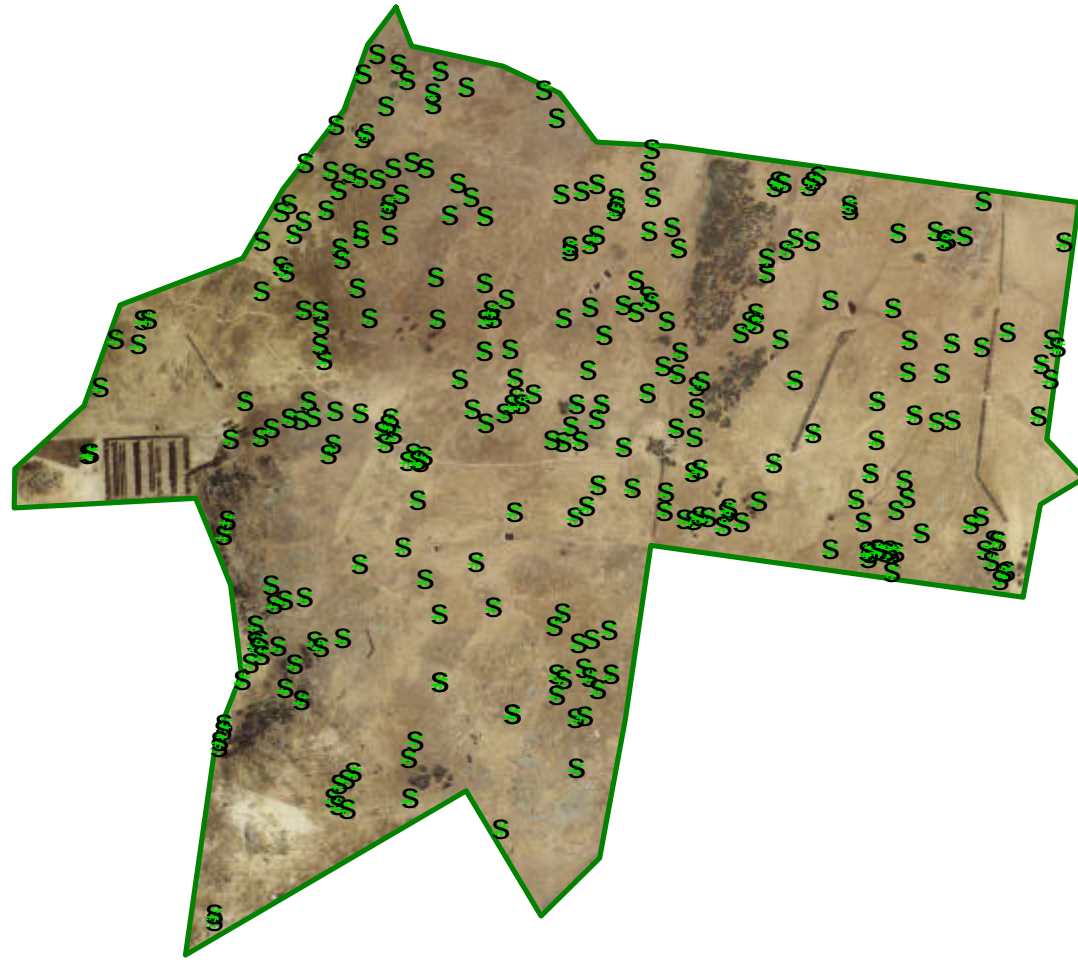
Lambeck, R.J. (1998). The relationship between remnant vegetation and other land resources. *In* 'Farming Action Catchment Reaction'. (Eds J. Williams, R.A. Hook and H.L. Gascoigne.) pp. 229-238 (CSIRO: Collingwood, Victoria)

Titcumb, M.G. (2002). Managing Your Patch of Bush. Department of Natural Resources and Environment, Wodonga, Victoria.

North East Salinity Working Group (1977). Reversing the Trend: North East Salinity Strategy (Draft). Department of Natural Resources and Environment, Wangaratta, Victoria.

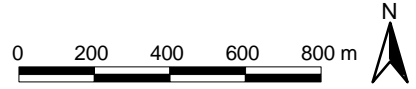
Appendix 1: Map 1  
Property 1 Isolated Paddock Trees in 1972

Appendix 1: Map 2  
Property 1 Isolated Paddock Trees in 2001



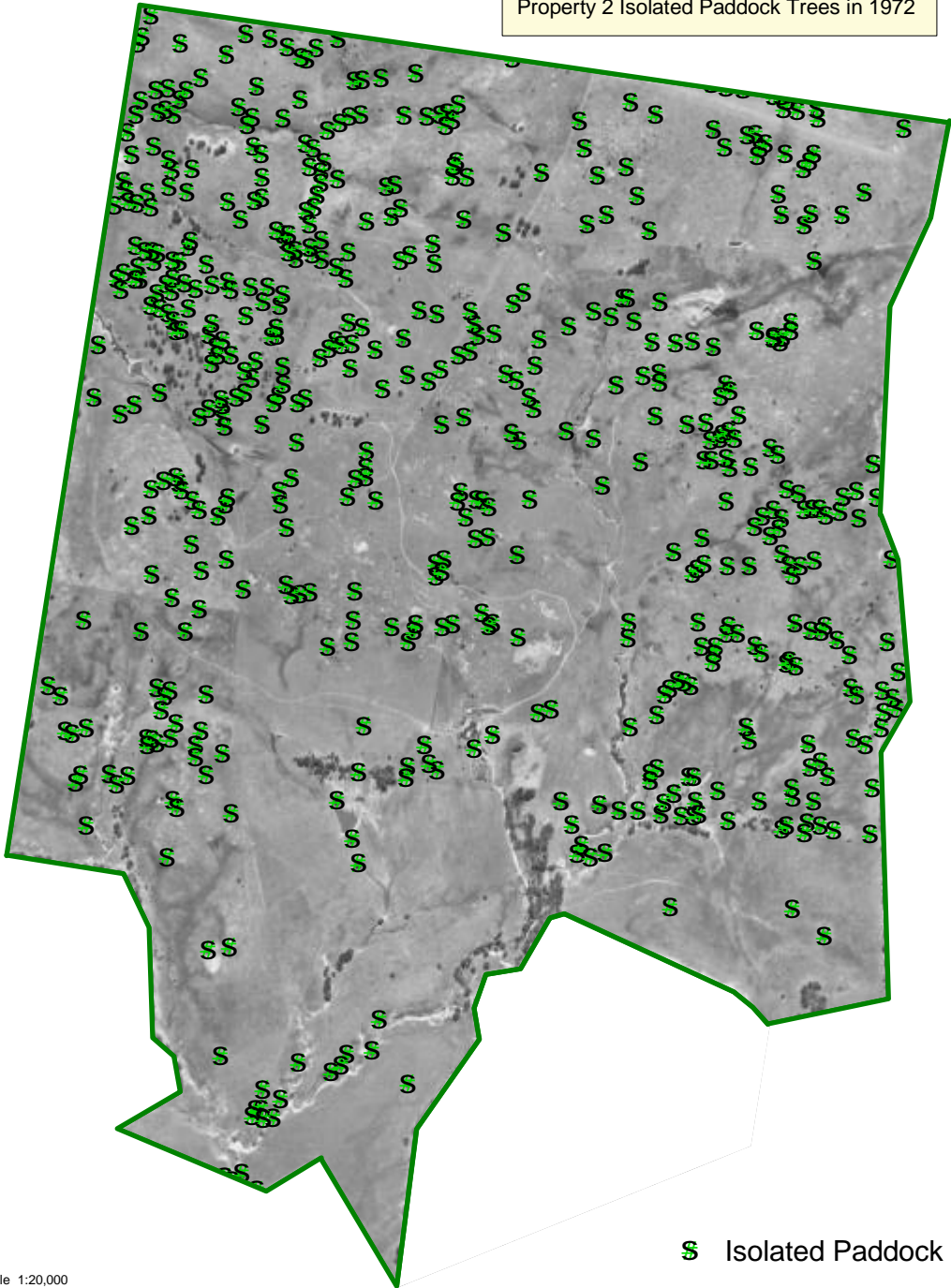
§ Isolated Paddock Trees (493; 294) - 40% loss

Scale 1:20,000  
Copyright: The State of Victoria, Dept. of Primary Industries, 2003  
The State of Victoria does not warrant the accuracy or completeness of the information in this publication.  
Any person using or relying upon such information does so on the basis that the State of Victoria shall  
bear no responsibility or liability whatsoever for any faults, defects or omissions in the information.  
Base Data from DPI/DSE Corporate Library & GIS DPI, Wodonga.  
Tree point data sourced from DPI, Wodonga.  
Colour Orthophotography from the 'North East Land Resource Assessment Project', DNRE Feb - 2001.  
Merged SPOT/Landsat Imagery from the ACRES & SPOT Imaging Services.  
Projection: AMG 1986 - Zone 55.

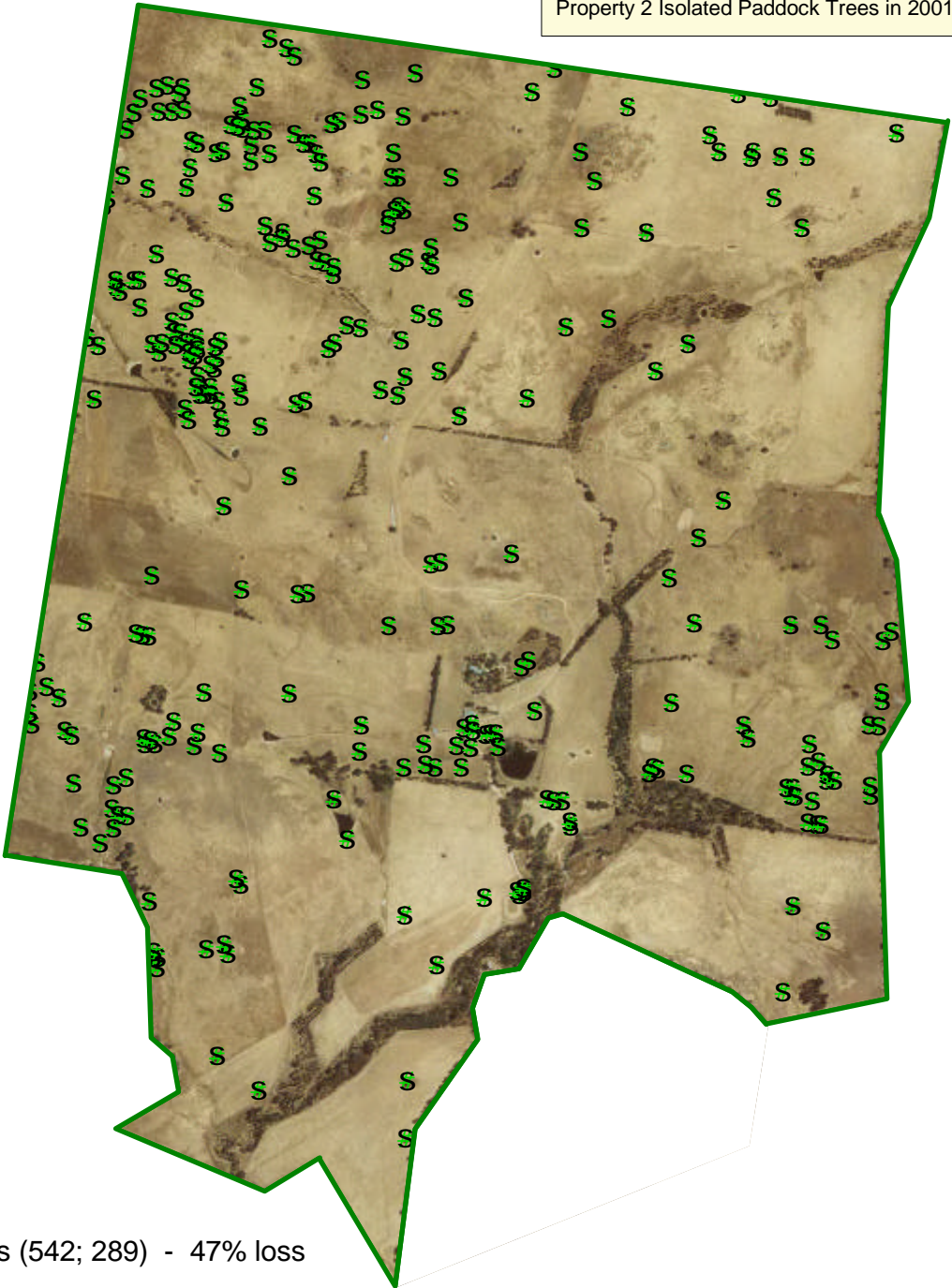




Appendix 1: Map 3  
Property 2 Isolated Paddock Trees in 1972

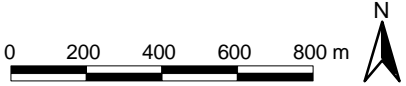


Appendix 1: Map 4  
Property 2 Isolated Paddock Trees in 2001



§ Isolated Paddock Trees (542; 289) - 47% loss

Scale 1:20,000  
 Copyright: The State of Victoria, Dept. of Primary Industries, 2003  
 The State of Victoria does not warrant the accuracy or completeness of the information in this publication.  
 Any person using or relying upon such information does so on the basis that the State of Victoria shall  
 bear no responsibility or liability whatsoever for any faults, defects or omissions in the information.  
 Base Data from DPI/DSE Corporate Library & GIS DPI, Wodonga.  
 Tree point data sourced from DPI, Wodonga.  
 Colour Orthophotography from the 'North East Land Resource Assessment Project', DNRE Feb - 2001.  
 Merged SPOT/Landsat Imagery from the ACRES & SPOT Imaging Services.  
 Projection: AMG 1986 - Zone 55.



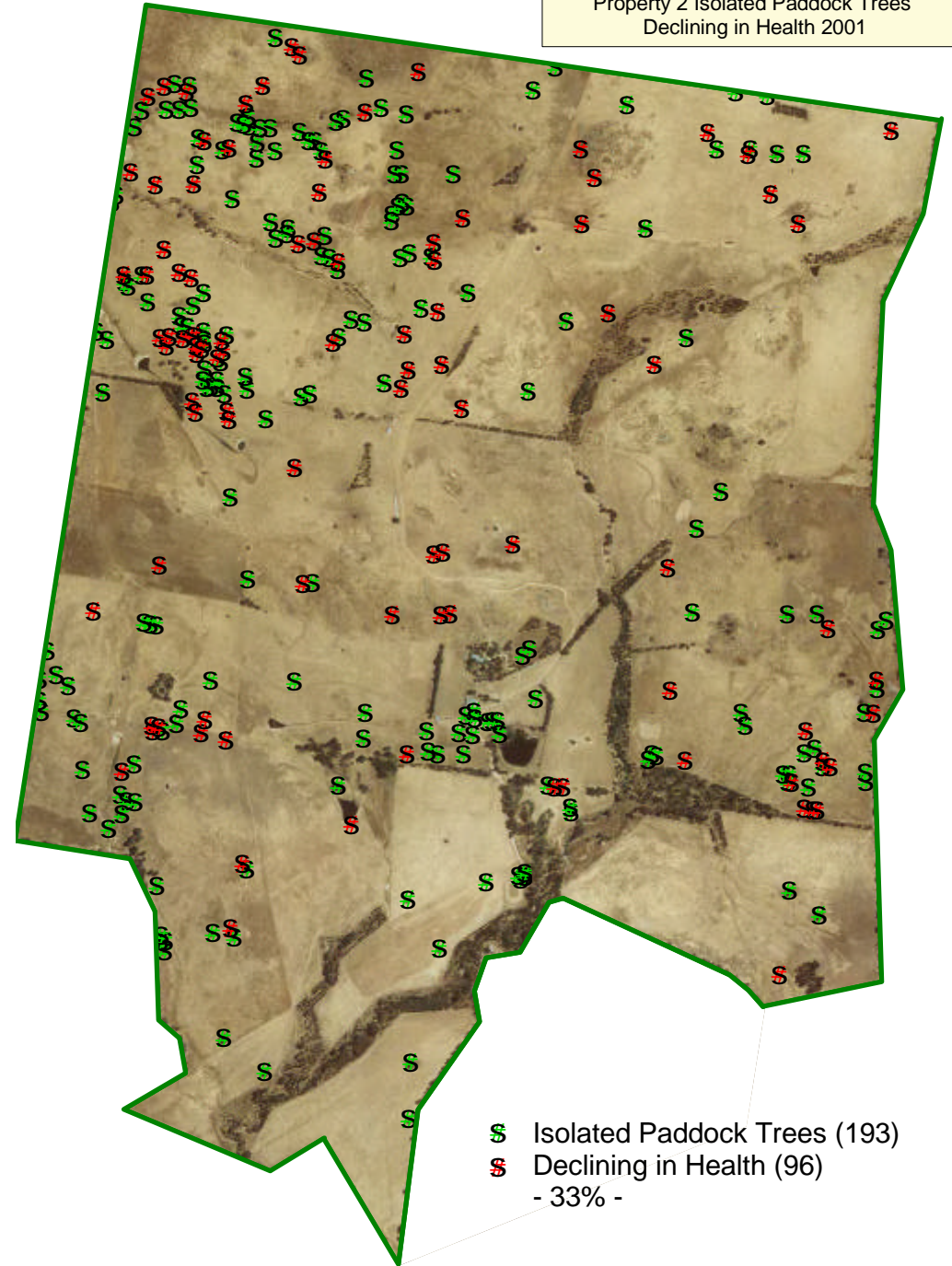


Appendix 2: Map 1  
Property 1 Isolated Paddock Trees  
Declining in Health 2001



\$ Isolated Paddock Trees (204)  
\$ Declining in Health (90)  
 - 31% -

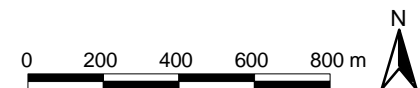
Appendix 2: Map 2  
Property 2 Isolated Paddock Trees  
Declining in Health 2001



\$ Isolated Paddock Trees (193)  
\$ Declining in Health (96)  
 - 33% -

Scale 1:20,000

Copyright: The State of Victoria, Dept. of Primary Industries, 2003.  
 The State of Victoria does not warrant the accuracy or completeness of the information in this publication.  
 Any person using or relying upon such information does so on the basis that the State of Victoria shall  
 bear no responsibility or liability whatsoever for any faults, defects or omissions in the information.  
 Base Data from DPI/DSE Corporate Library & GIS DPI, Wodonga.  
 Tree point data sourced from DPI, Wodonga.  
 Colour Orthophotography from the 'North East Land Resource Assessment Project', DNRE Feb - 2001.  
 Merged SPOT/Landsat Imagery from the ACRES & SPOT Imaging Services.  
 Projection: AMG 1986 - Zone 55.



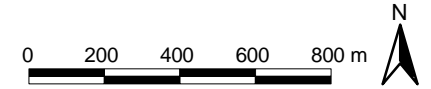
Appendix 3: Map 1  
Property 1 Native Vegetation Cover in 1972

Appendix 3: Map 2  
Property 1 Native Vegetation Cover in 2001



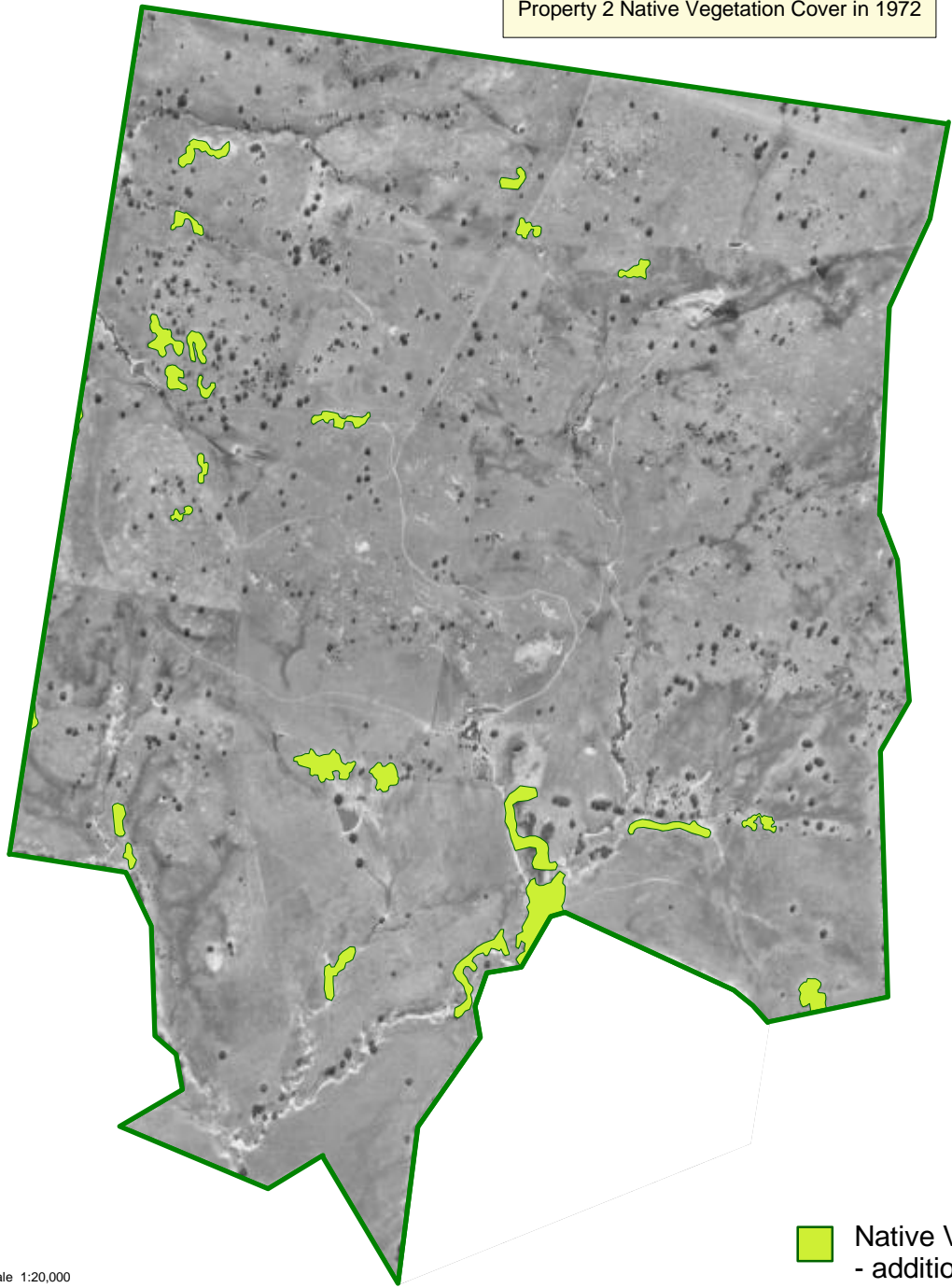
Native Vegetation Stands  
- additional 11.8 ha -

Scale 1:20,000  
Copyright: The State of Victoria, Dept. of Primary Industries, 2003  
The State of Victoria does not warrant the accuracy or completeness of the information in this publication. Any person using or relying upon such information does so on the basis that the State of Victoria shall bear no responsibility or liability whatsoever for any faults, defects or omissions in the information.  
Base Data from DPI/DSE Corporate Library & GIS DPI, Wodonga.  
Tree point data sourced from DPI, Wodonga.  
Colour Orthophotography from the 'North East Land Resource Assessment Project', DNRE Feb - 2001.  
Merged SPOT/Landsat Imagery from the ACRES & SPOT Imaging Services.  
Projection: AMG 1966 - Zone 55.





Appendix 3: Map 3  
Property 2 Native Vegetation Cover in 1972



Appendix 3: Map 4  
Property 2 Native Vegetation Cover in 2001



Native Vegetation Stands  
- additional 66 ha -

Scale 1:20,000  
Copyright: The State of Victoria, Dept. of Primary Industries, 2003  
The State of Victoria does not warrant the accuracy or completeness of the information in this publication. Any person using or relying upon such information does so on the basis that the State of Victoria shall bear no responsibility or liability whatsoever for any faults, defects or omissions in the information.  
Base Data from DPI/DSE Corporate Library & GIS DPI, Wodonga.  
Tree point data sourced from DPI, Wodonga.  
Colour Orthophotography from the 'North East Land Resource Assessment Project', DNRE Feb - 2001.  
Merged SPOT/Landsat Imagery from the ACRES & SPOT Imaging Services.  
Projection: AMG 1966 - Zone 55.

