

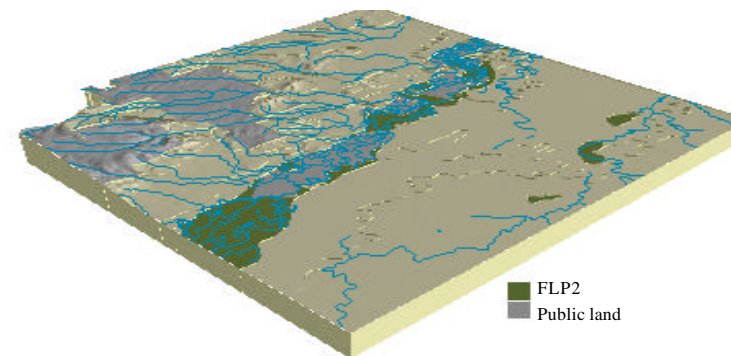
Soil landform unit: FLP2; Floodplain, type 2, Ovens River

Landform pattern	Floodplain
Elevation (m)	120-160
Annual rainfall (mm)	500-760
Geomorphic unit	4.1.1 Riverine Plain; Modern Floodplain; Meander Belt below Plain Level
Geology	Quaternary sediments

Locality diagram



Position in landscape



Landform component	1	2	3	4
Landform element	Terrace plain	Terrace flat, type 1	Terrace flat, type 2 with occasional wetlands	Channel bench
Slope range (%)	0-1	0-1	0-1	0-1
Site drainage	Moderately well drained	Moderately well drained	Rapidly drained or very poorly drained	Rapidly drained
Rock outcrop	Nil	Nil	Nil	Nil
Soil description	Moderate to strongly structured red texture contrast soils	Weakly structured yellowish brown and red-brown gradational soils	Uniform brown sandy clay loam soils on flats; uniform grey clay soils in wetlands	Poorly structured grey sandy loam soils; stony and gravelly soils
Present land use	Grazing, cropping, intensive horticulture	Grazing, cropping, intensive horticulture	Grazing, intensive horticulture	Grazing
Susceptibility to erosion	Sheet and rill: Low	Sheet and rill: Moderate	Sheet and rill: High	Sheet and rill: Low
	Gully: Moderate	Gully: Moderate	Gully: Low	Gully: Moderate
	Landslip: Low	Landslip: Low	Landslip: Low	Landslip: Low
	Wind: Very low	Wind: Very low	Wind: Low	Wind: Very low
Native vegetation	<i>Eucalyptus camaldulensis</i> , <i>E. melliodora</i> , <i>E. blakelyi</i> , <i>E. microcarpa</i>	<i>E. camaldulensis</i> , <i>E. melliodora</i>	<i>E. camaldulensis</i>	<i>E. camaldulensis</i>